

# CERTIFICATE OF LOCATION OF GOVERNMENT CORNER

County of Anoka

State of Minnesota

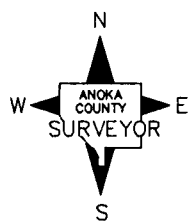
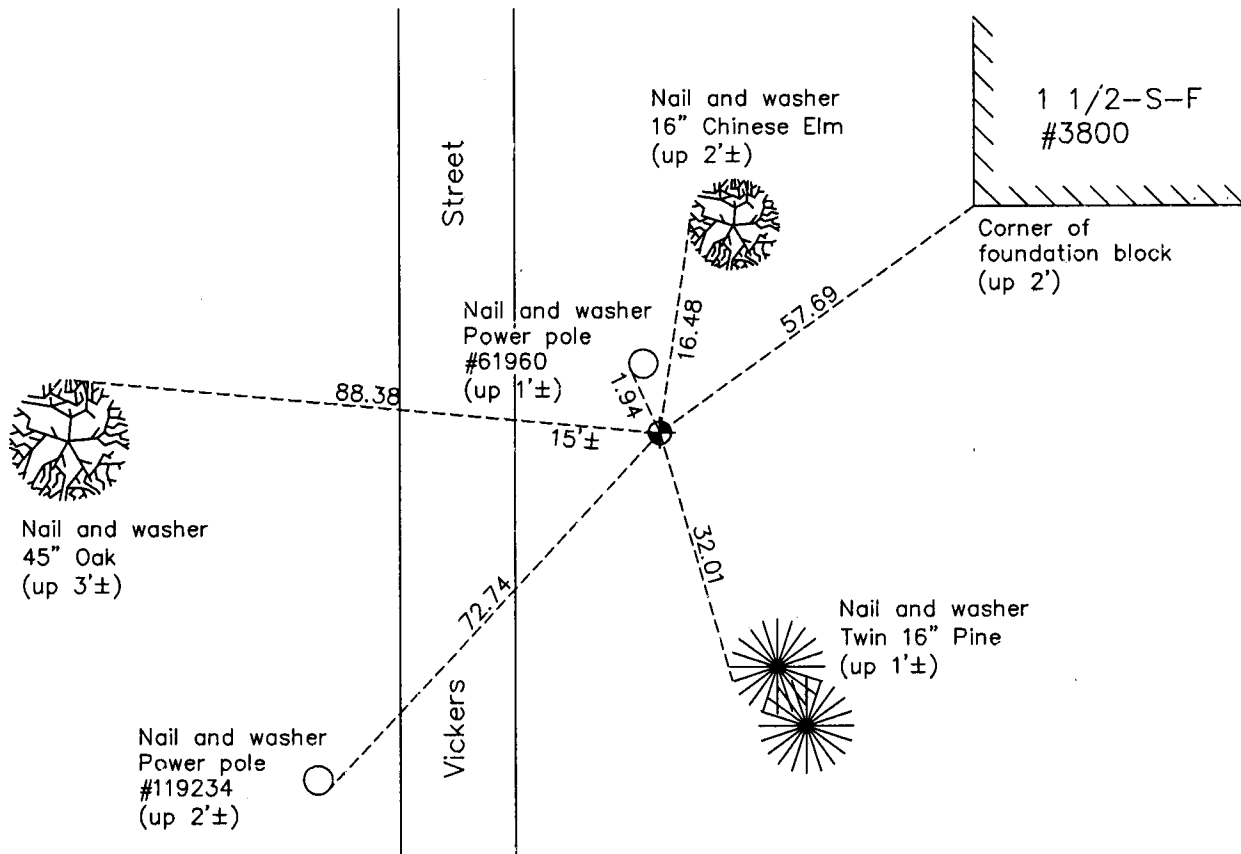
## North 1/4 Corner of Sec. 35 Township 33 Range 23

On the 17th day of August, 1964, the described corner was evidenced by a 1' saw axle shaft

and to perpetuate the location of said corner, at the exact location thereof, a permanent marker was placed consisting of a cast iron monument

AND on the 4th day of December, 2012, said permanent marker was found and the ties were updated. Monument is close to property line.

Updated reference ties are as shown below.



Revision Date

8/30/13

N.A.D. 1983 Coordinates  
(1996 Adjustment)

County Project Coordinates	
Northing	<u>200933.3331</u>
Easting	<u>523889.7593</u>
Date	<u>6/20/02</u>

I hereby certify that this United States public land survey monument record is correct and complete to the best of my knowledge and belief.

*Larry D. Hoium* Date 8/30/13

Larry D. Hoium, Anoka County Surveyor

Minnesota License Number 18165