

CERTIFICATE OF LOCATION OF GOVERNMENT CORNER

County of Anoka

State of Minnesota

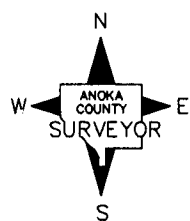
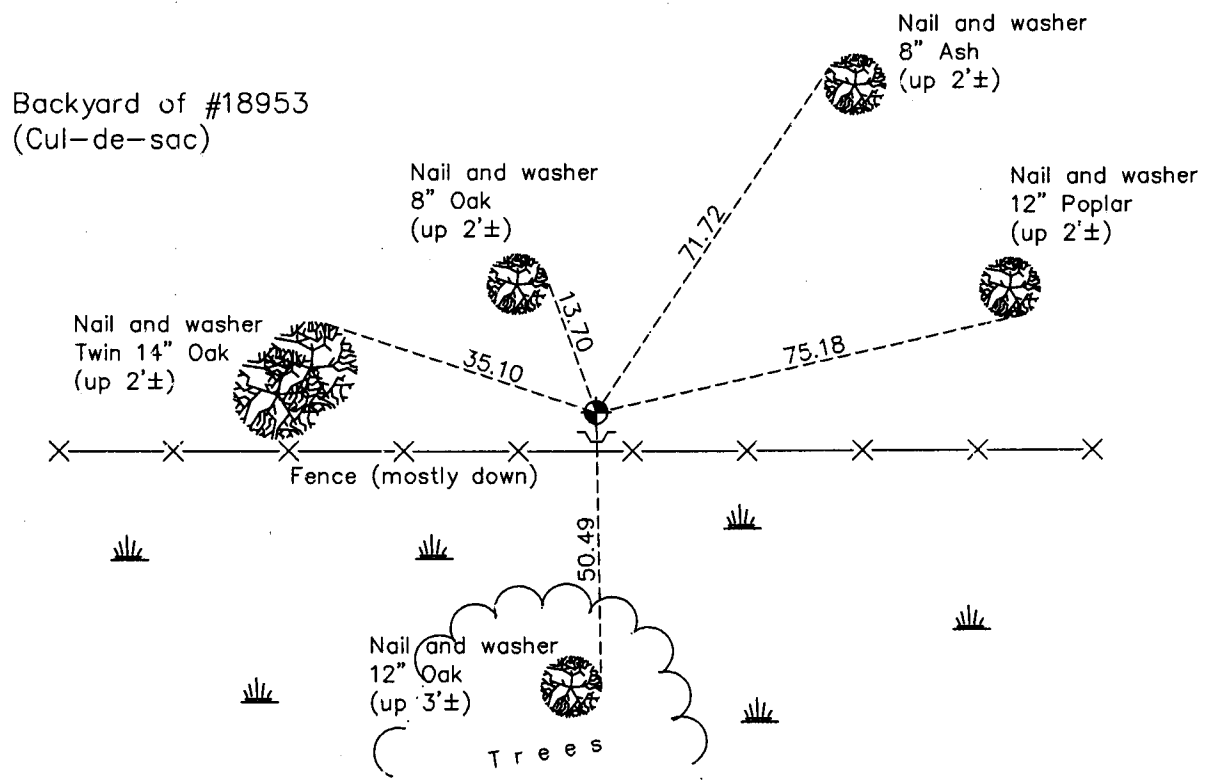
Northeast Corner of Sec. 33 Township 33 Range 23

On the 26th day of September, 1961, the described corner was evidenced by a 1/2" iron pipe

and to perpetuate the location of said corner, at the exact location thereof, a permanent marker was placed consisting of a cast iron monument with a sign and post on the south side

AND on the 5th day of December, 2012, said permanent marker was found up 0.2'± and the ties were updated. Sign is broken.

Updated reference ties are as shown below.



Revision Date

8/30/13

N.A.D. 1983 Coordinates
(1996 Adjustment)

County Project Coordinates

Northing 201015.4264

Easting 515920.3413

Date 6/20/02

I hereby certify that this United States public land survey monument record is correct and complete to the best of my knowledge and belief.

Larry D. Hoium Date 8/30/13

Larry D. Hoium, Anoka County Surveyor

Minnesota License Number 18165