

CERTIFICATE OF LOCATION OF GOVERNMENT CORNER

County of Anoka

State of Minnesota

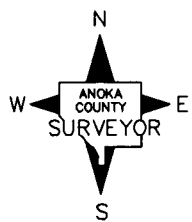
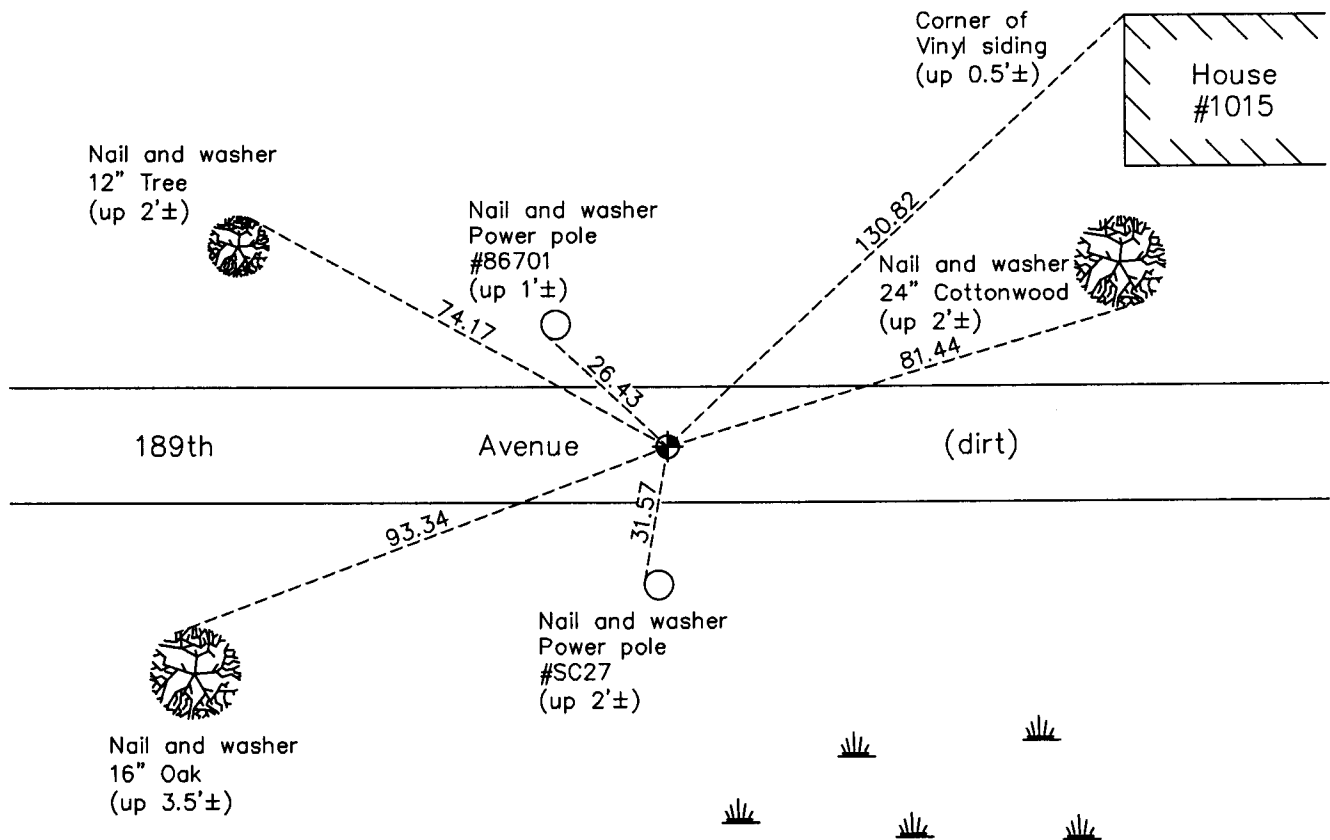
Southwest Corner of Sec. 29 Township 33 Range 23

On the 7th day of August, 1963, the described corner was evidenced by a granite monument

and to perpetuate the location of said corner, at the exact location thereof, a permanent marker was placed consisting of a cast iron monument down 1.5'±

AND on the 24th day of April, 2013, said permanent marker was found and the ties were updated

Updated reference ties are as shown below.



Revision Date

11/25/13

N.A.D. 1983 Coordinates
(1996 Adjustment)

County Project Coordinates	
Northing	<u>201083.9025</u>
Easting	<u>505262.7351</u>
Date	<u>5/08/02</u>

I hereby certify that this United States public land survey monument record is correct and complete to the best of my knowledge and belief.

Larry D. Hoium Date 11/25/13

Larry D. Hoium, Anoka County Surveyor

Minnesota License Number 18165