

# CERTIFICATE OF LOCATION OF GOVERNMENT CORNER

County of Anoka

State of Minnesota

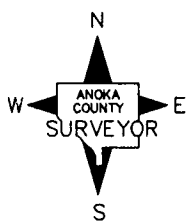
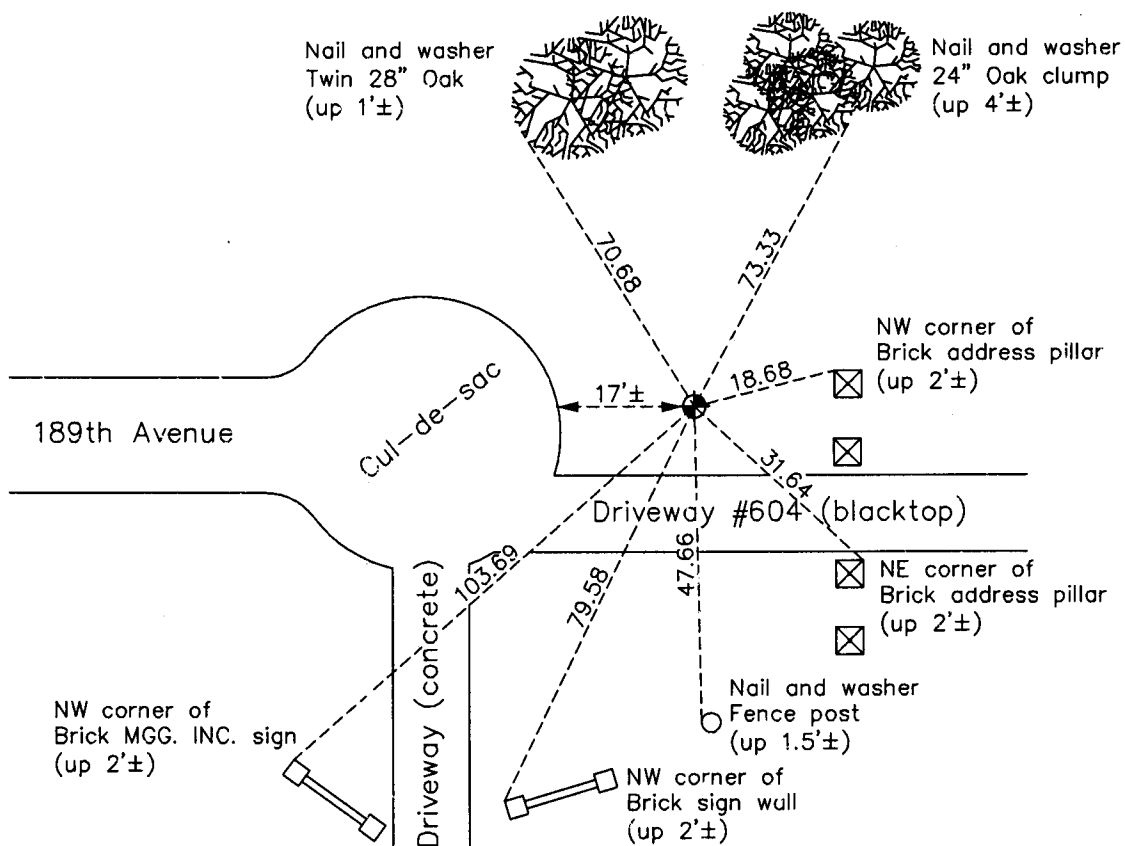
## North 1/4 Corner of Sec. 31 Township 33 Range 23

On the 26th day of April, 1982, the described corner was evidenced by an old well  
point down 0.5'± at intersection of fences

and to perpetuate the location of said corner, at the exact location thereof, a permanent marker  
 was placed consisting of a cast iron monument

AND on the 12th day of February, 2013, said permanent marker was found and the ties  
were updated

Updated reference ties are as shown below.



Revision Date  
9/09/13

N.A.D. 1983 Coordinates  
 (1996 Adjustment)

County Project Coordinates	
Northing	<u>201119.7950</u>
Easting	<u>502652.9167</u>
Date	<u>5/08/02</u>

I hereby certify that this United States public land survey monument record is correct and complete to the best of my knowledge and belief.

*Larry D. Hoium* Date 9/09/13

Larry D. Hoium, Anoka County Surveyor

Minnesota License Number 18165