

CERTIFICATE OF LOCATION OF GOVERNMENT CORNER

County of Anoka

State of Minnesota

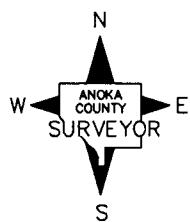
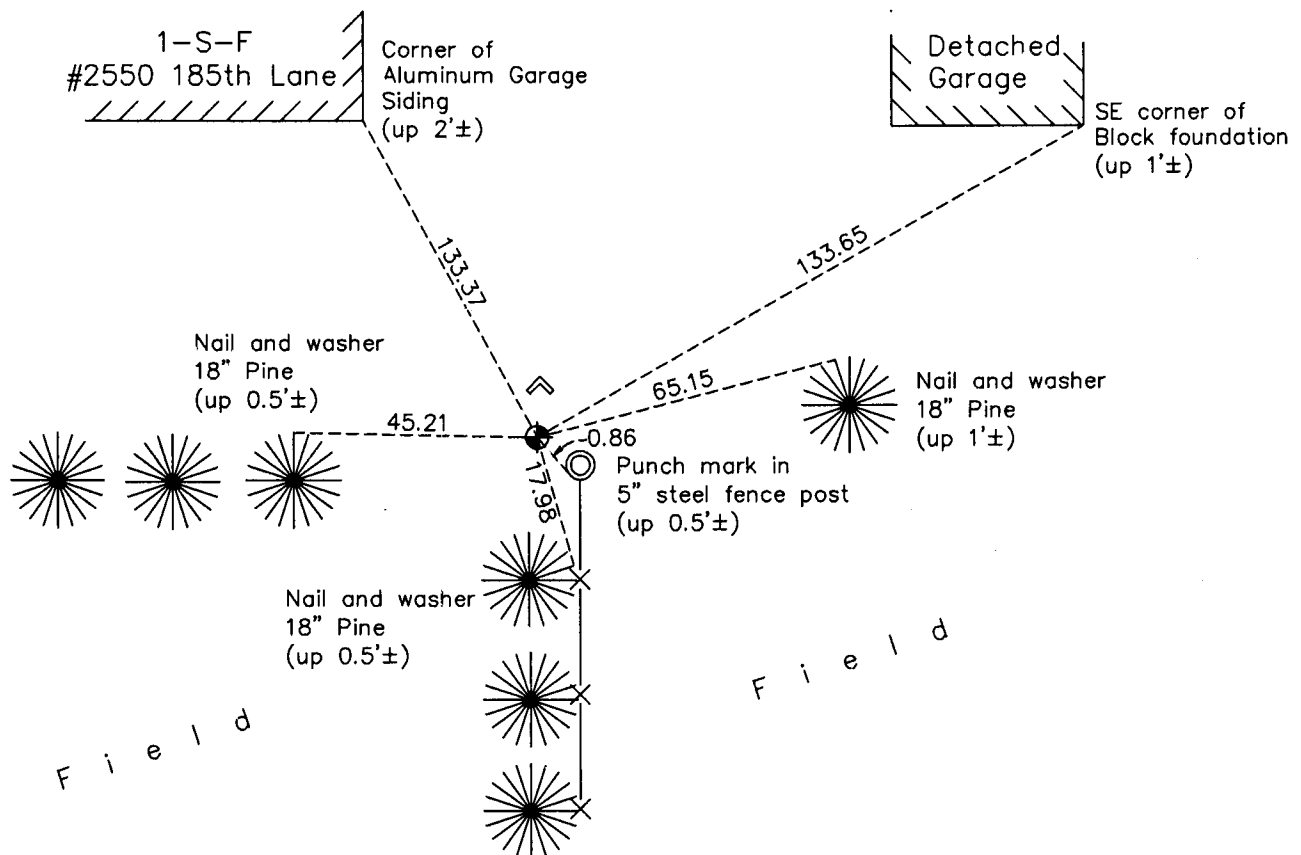
East 1/4 Corner of Sec. 33 Township 33 Range 23

On the 20th day of July, 1965, the described corner was evidenced by a 1 1/2" well point

and to perpetuate the location of said corner, at the exact location thereof, a permanent marker was placed consisting of a cast iron monument with an angle iron post on the north side

AND on the 15th day of February, 2013, said permanent marker was found and the ties were updated

Updated reference ties are as shown below.



Revision Date

9/09/13

N.A.D. 1983 Coordinates
(1996 Adjustment)

County Project Coordinates	
Northing	198369.1629
Easting	516099.1191
Date	6/20/02

I hereby certify that this United States public land survey monument record is correct and complete to the best of my knowledge and belief.

Date 9/09/13
 Larry D. Hoium, Anoka County Surveyor
 Minnesota License Number 18165