

CERTIFICATE OF LOCATION OF GOVERNMENT CORNER

County of Anoka

State of Minnesota

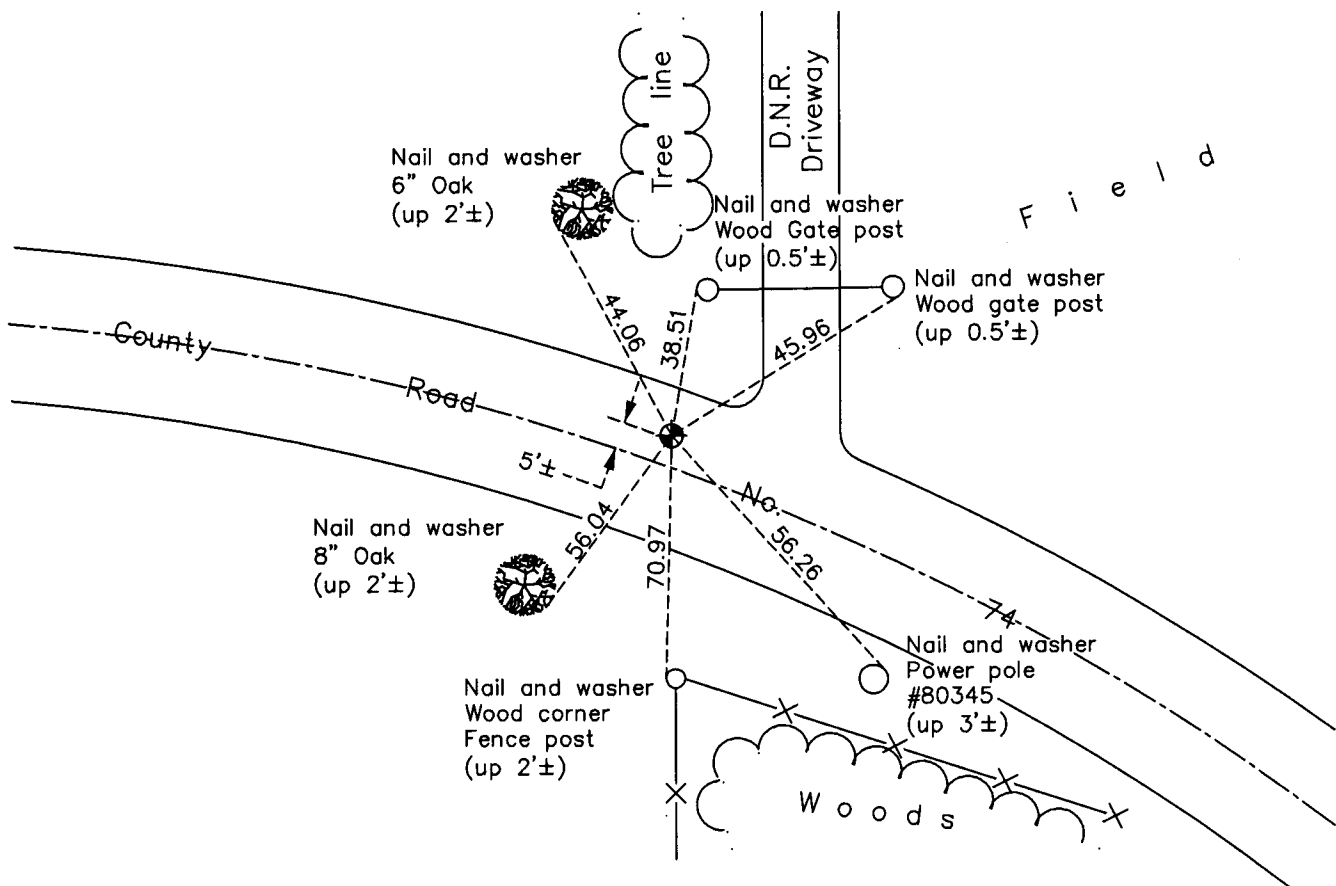
East 1/4 Corner of Sec. 12 Township 33 Range 23

On the 30th day of September, 1963, the described corner was evidenced by 1960 ties

and to perpetuate the location of said corner, at the exact location thereof, a permanent marker was placed consisting of a cast iron monument

AND on the 29th day of January, 2013, said permanent marker was found and the ties were updated

Updated reference ties are as shown below.



ANOKA COUNTY SURVEYOR

Revision Date

10/28/13

N.A.D. 1983 Coordinates
(1996 Adjustment)

County Project Coordinates	
Northing	219395.0542
Easting	531580.2993
Date	5/08/02

I hereby certify that this United States public land survey monument record is correct and complete to the best of my knowledge and belief.

Larry D. Hoium Date 10/28/13

Larry D. Hoium, Anoka County Surveyor

Minnesota License Number 18165