

CERTIFICATE OF LOCATION OF GOVERNMENT CORNER

County of Anoka

State of Minnesota

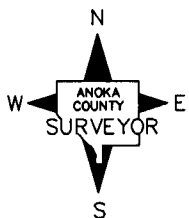
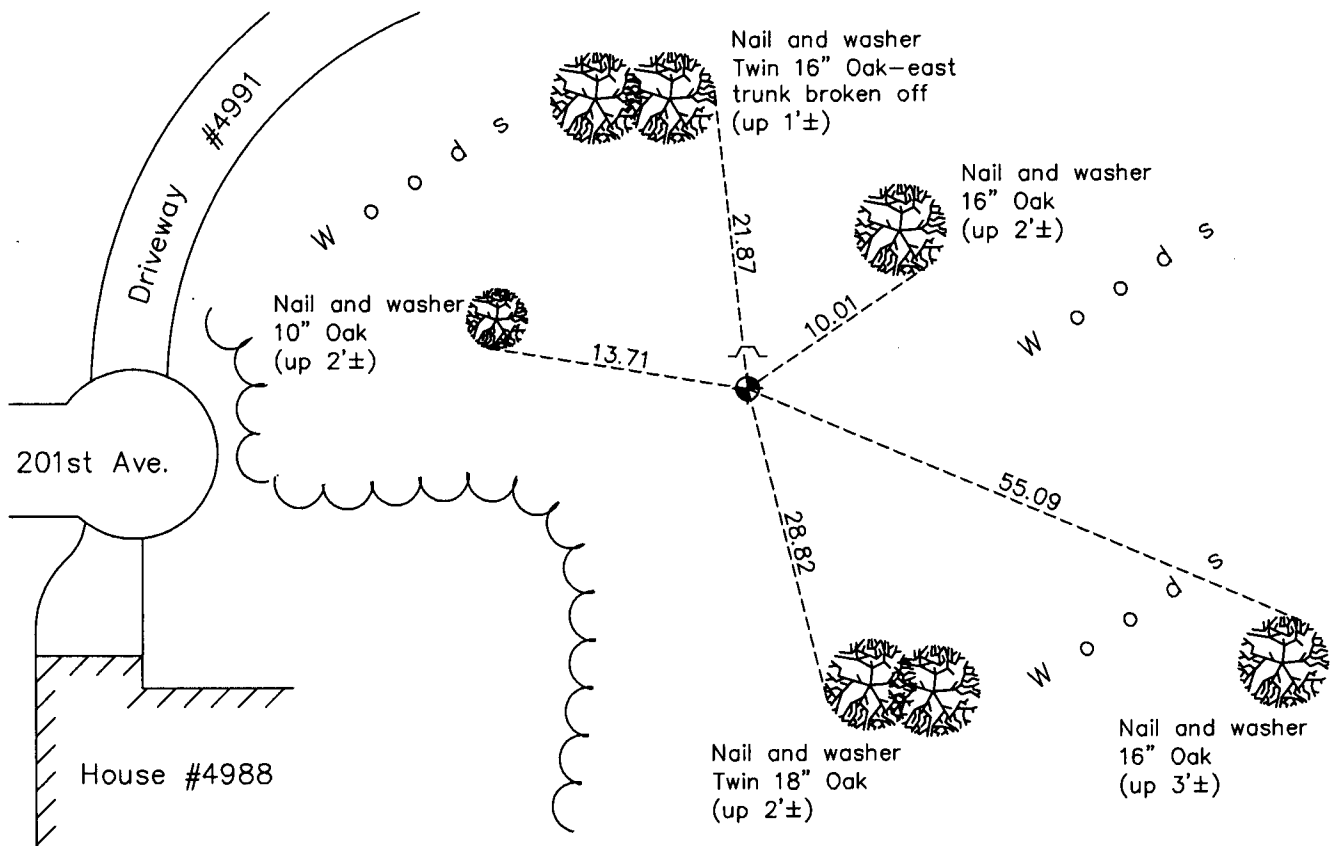
East 1/4 Corner of Sec. 24 Township 33 Range 23

On the 16th day of March, 1970, the described corner was evidenced by a 1" iron rod from Ray Carlson ties

and to perpetuate the location of said corner, at the exact location thereof, a permanent marker was placed consisting of a cast iron monument with a sign and post on the north side

AND on the 14th day of January, 2013, said permanent marker was found and the ties were updated

Updated reference ties are as shown below.



Revision Date
11/21/13

N.A.D. 1983 Coordinates
(1996 Adjustment)

County Project Coordinates	
Northing	208812.8759
Easting	531832.3975
Date	3/13/03

I hereby certify that this United States public land survey monument record is correct and complete to the best of my knowledge and belief.

Larry D. Hoium Date 11/21/13

Larry D. Hoium, Anoka County Surveyor

Minnesota License Number 18165