

CERTIFICATE OF LOCATION OF GOVERNMENT CORNER

County of Anoka

State of Minnesota

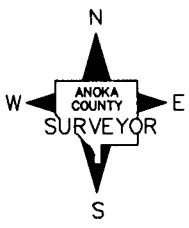
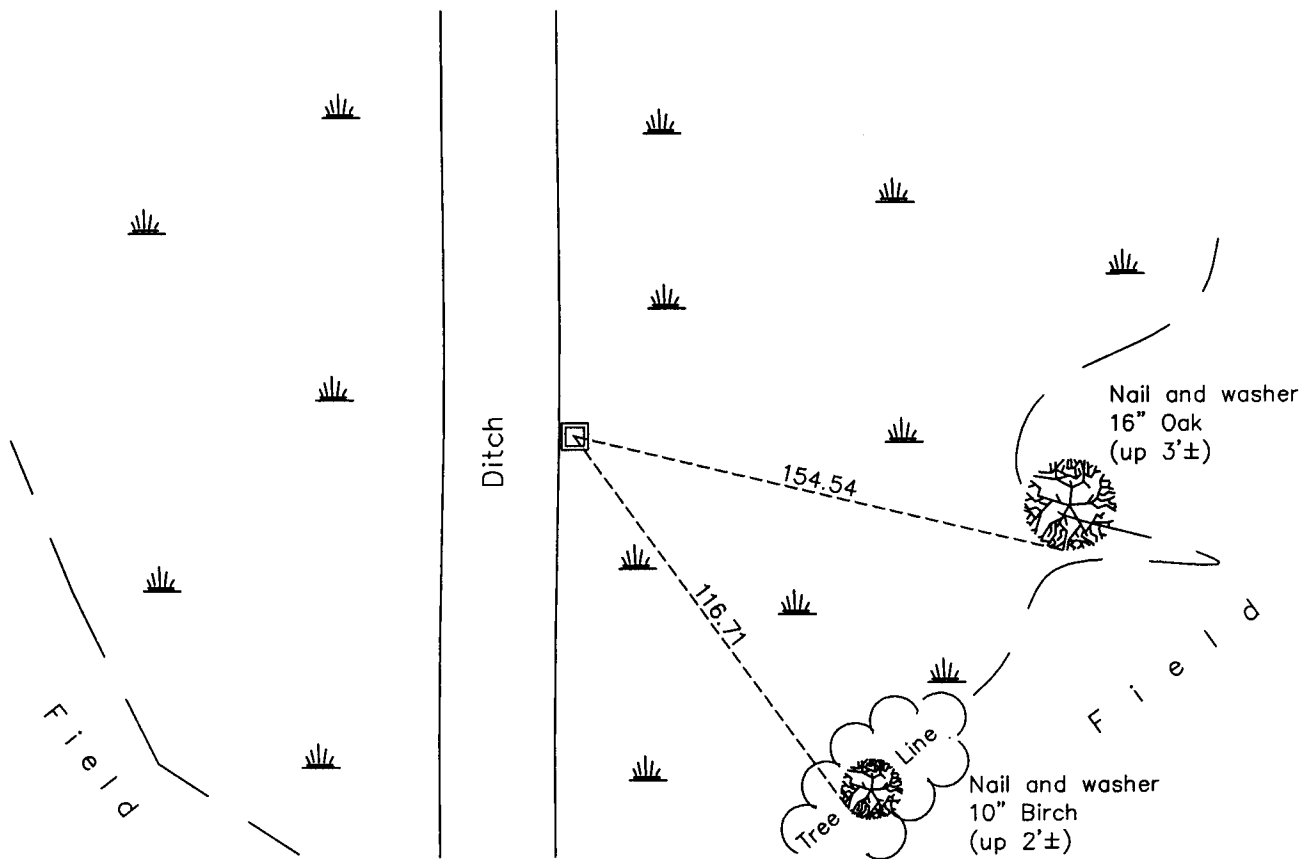
Northeast Corner of Sec. 25 Township 34 Range 23

On the 3rd day of October, 1978, the described corner was evidenced by area resurvey

and to perpetuate the location of said corner, at the exact location thereof, a permanent marker was placed consisting of a red and white 2" square steel Telspar monument

AND on the 26th day of April, 2012, said permanent marker was found leaning slightly west and the ties were updated

Updated reference ties are as shown below.



N.A.D. 1983 Coordinates
(1996 Adjustment)

County Project Coordinates

Northing 238016.7718

Easting 531973.3199

Date 4/03/03

Revision Date
3/04/13

I hereby certify that this United States public land survey monument record is correct and complete to the best of my knowledge and belief.

Larry D. Hoium Date 3/04/13

Larry D. Hoium, Anoka County Surveyor
Minnesota License Number 18165