

CERTIFICATE OF LOCATION OF GOVERNMENT CORNER

County of Anoka

State of Minnesota

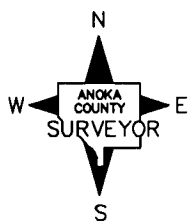
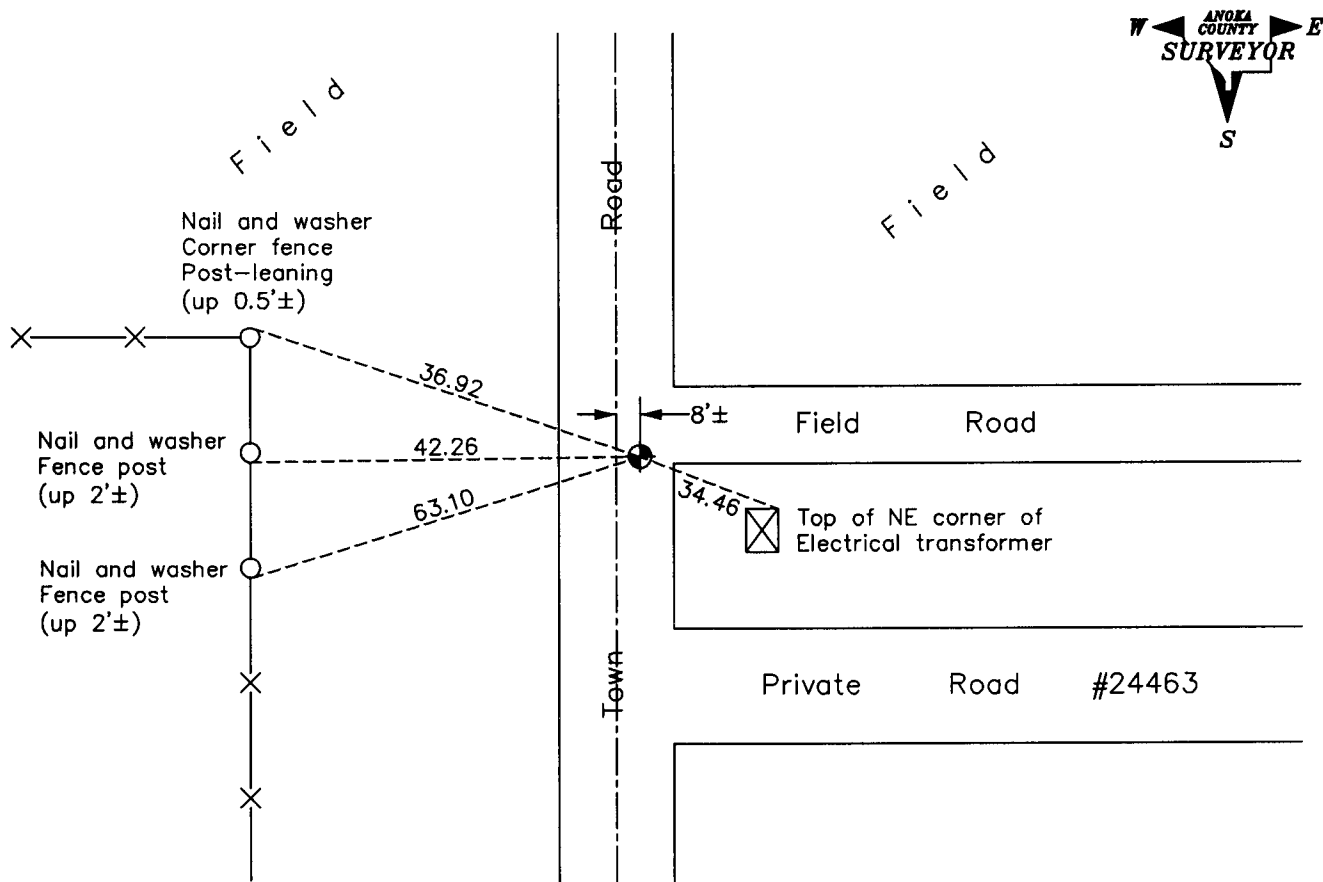
Northeast Corner of Sec. 26 Township 34 Range 23

On the 19th day of April, 1960, the described corner was evidenced by an Isanti County cast iron monument

and to perpetuate the location of said corner, at the exact location thereof, a permanent marker was placed consisting of the same cast iron monument

AND on the 25th day of July, 2012, said permanent marker was found down 1'± and the ties were updated

Updated reference ties are as shown below.



Revision Date
3/04/13

N.A.D. 1983 Coordinates
(1996 Adjustment)

County Project Coordinates	
Northing	<u>238217.8326</u>
Easting	<u>526652.1547</u>
Date	<u>5/22/02</u>

I hereby certify that this United States public land survey monument record is correct and complete to the best of my knowledge and belief.

Larry D. Hoium Date 3/04/13

Larry D. Hoium, Anoka County Surveyor

Minnesota License Number 18165