

CERTIFICATE OF LOCATION OF GOVERNMENT CORNER

County of Anoka

State of Minnesota

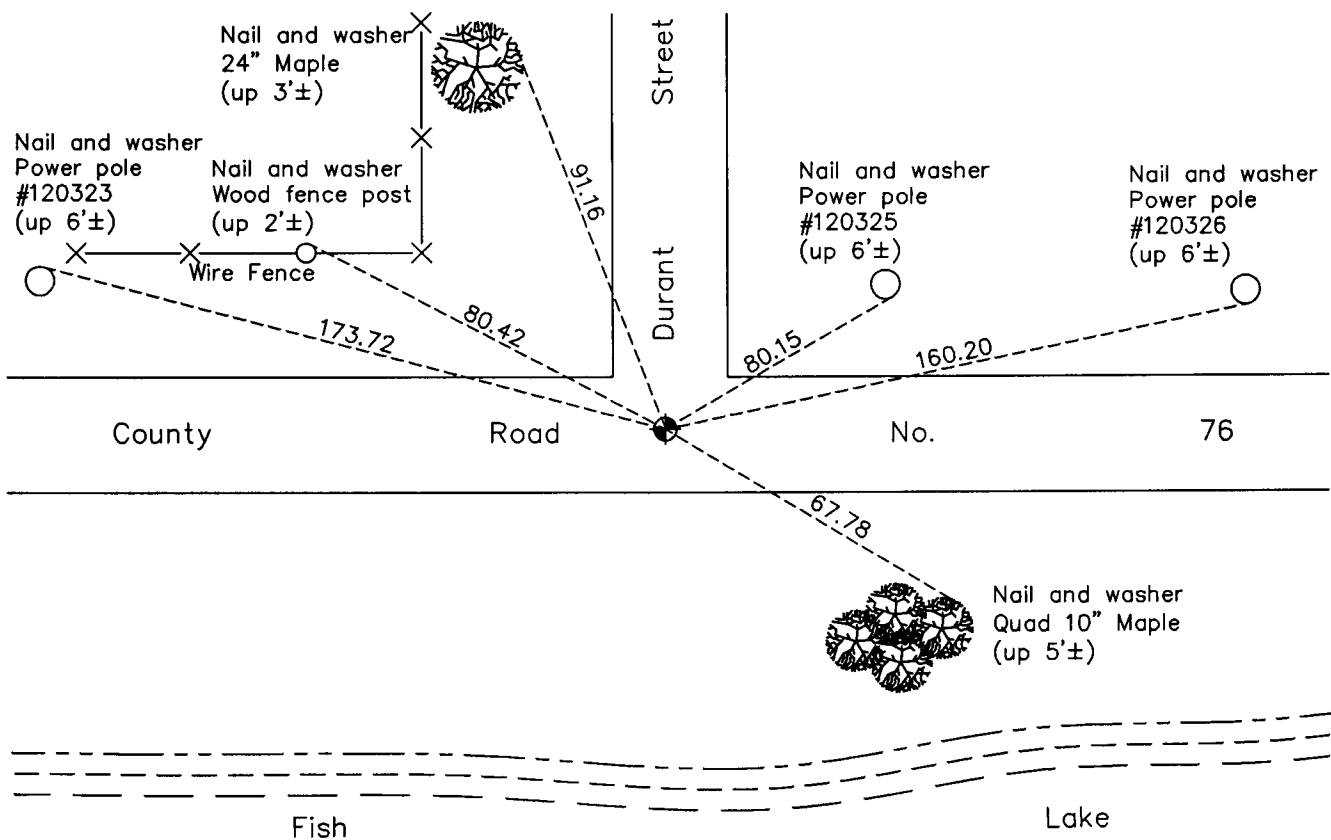
Witness Corner of Sec. 25 Township 34 Range 23
 (on west line of NW 1/4)

On the 5th day of October, 1978, the described corner was evidenced by a 1/2" iron pipe

and to perpetuate the location of said corner, at the exact location thereof, a permanent marker was placed consisting of a cast iron monument

AND on the 25th day of July, 2012, said permanent marker was found down 0.2'± and the ties were updated. CIM was raised to flush with the surface.

Updated reference ties are as shown below.



Revision Date
3/20/13

N.A.D. 1983 Coordinates
(1996 Adjustment)

County Project Coordinates	
Northing	236194.0251
Easting	526654.5239
Date	5/22/02

I hereby certify that this United States public land survey monument record is correct and complete to the best of my knowledge and belief.

Date 3/20/13

Larry D. Hoium, Anoka County Surveyor
 Minnesota License Number 18165