

# CERTIFICATE OF LOCATION OF GOVERNMENT CORNER

County of Anoka

State of Minnesota

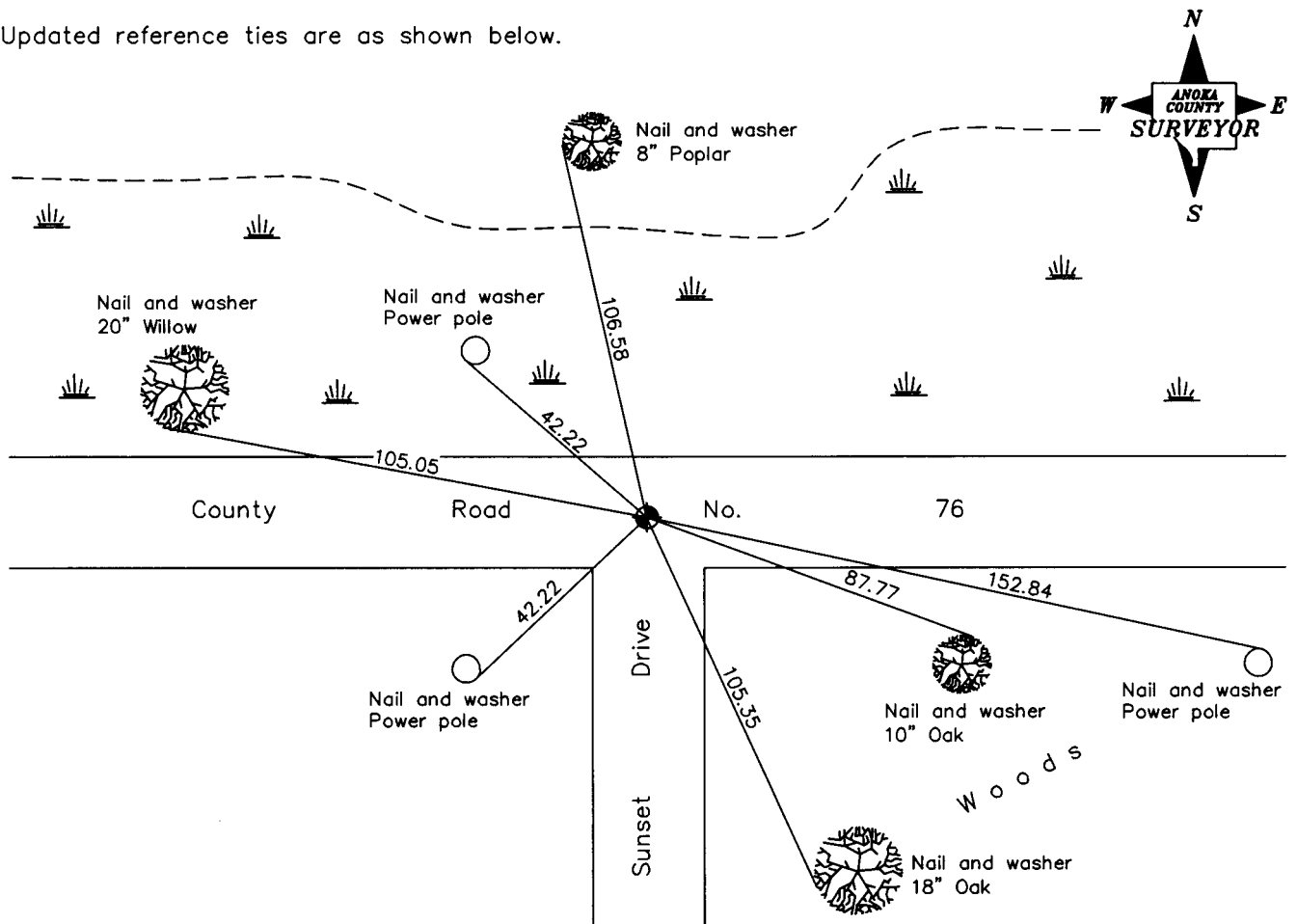
East 1/4 Corner of Sec. 25 Township 34 Range 23

On the 23rd day of July, 1962, the described corner was evidenced by a 1 1/2" iron pipe

and to perpetuate the location of said corner, at the exact location thereof, a permanent marker was placed consisting of a cast iron monument

AND on the 22nd day of May, 2002, said permanent marker was found and the ties were updated

Updated reference ties are as shown below.



**Revised date**

8/05/92
8/11/97
5/22/02

**N.A.D. 1983 Coordinates  
(1996 Adjustment)**

<b>County Project Coordinates</b>	
Northing	<u>235406.5953</u>
Easting	<u>531974.0032</u>
Date	<u>5/22/02</u>

I hereby certify that this United States public land survey monument record is correct and complete to the best of my knowledge and belief.

*Larry D. Hoium*      Date 5/22/02

\_\_\_\_\_  
Larry D. Hoium, Anoka County Surveyor

Minnesota License Number 18165