

CERTIFICATE OF LOCATION OF GOVERNMENT CORNER

County of Anoka

State of Minnesota

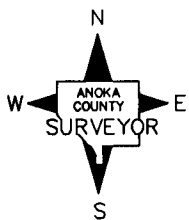
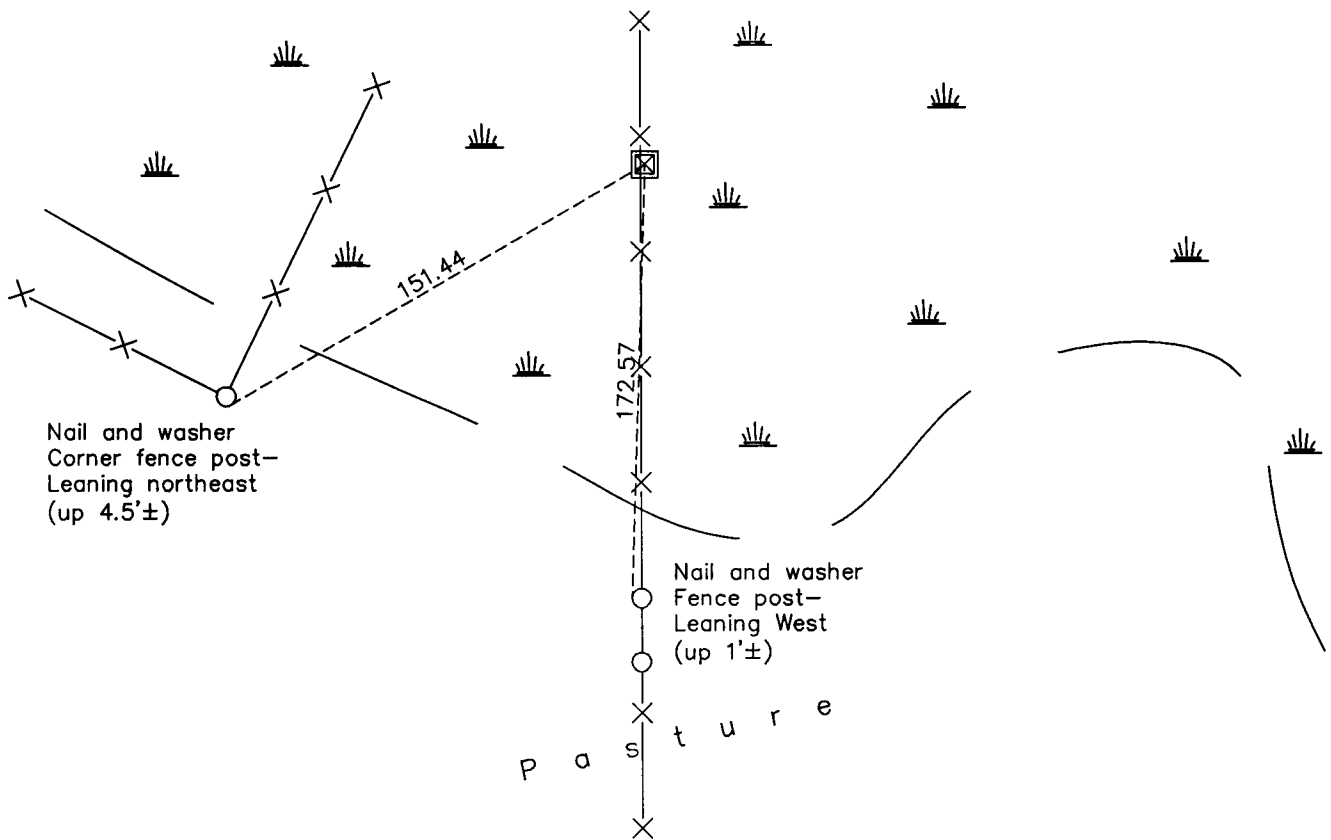
North 1/4 Corner of Sec. 36 Township 34 Range 23

On the 25th day of October, 1973, the described corner was evidenced by a 6' swamp iron

and to perpetuate the location of said corner, at the exact location thereof, a permanent marker was placed consisting of a red and white 2" square steel Telspar monument, up 2.5'±, with a 'County Surveyor' cap and a sign attached facing south

AND on the 26th day of December, 2012, said permanent marker was found leaning slightly to the east and the ties were updated

Updated reference ties are as shown below.



Revision Date

3/20/13

N.A.D. 1983 Coordinates
(1996 Adjustment)

County Project Coordinates

Northing 232816.2042

Easting 529321.2646

Date 4/07/03

I hereby certify that this United States public land survey monument record is correct and complete to the best of my knowledge and belief.

Larry D. Hoium Date 3/20/13

Larry D. Hoium, Anoka County Surveyor

Minnesota License Number 18165