

# CERTIFICATE OF LOCATION OF GOVERNMENT CORNER

County of Anoka

State of Minnesota

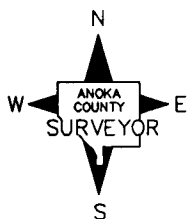
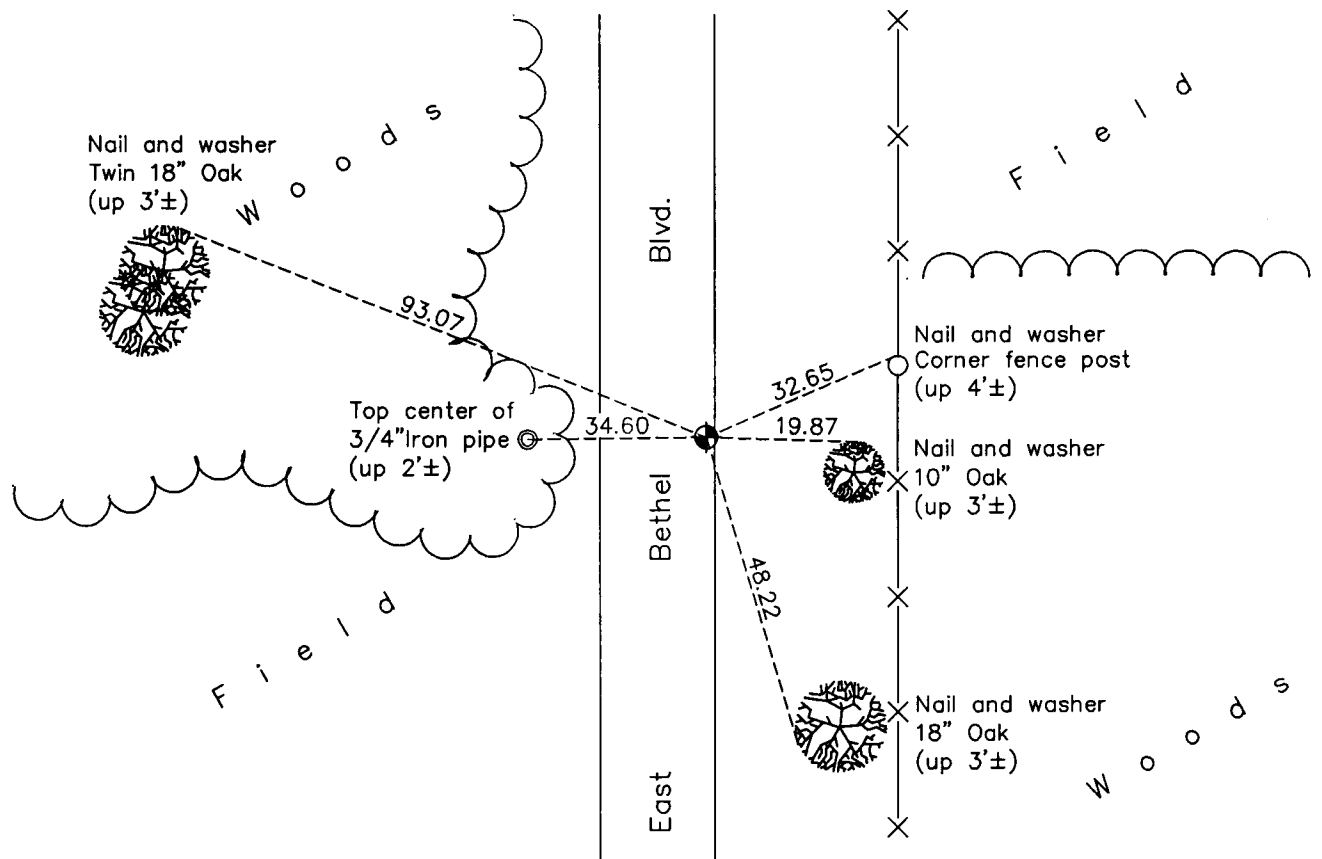
## Southwest Corner of Sec. 26 Township 34 Range 23

On the 2nd day of July, 1962, the described corner was evidenced by a 1" iron pipe

and to perpetuate the location of said corner, at the exact location thereof, a permanent marker was placed consisting of a cast iron monument

AND on the 27th day of September, 2012, said permanent marker was found down 1'± and on east edge of road. Ties were updated

Updated reference ties are as shown below.



N.A.D. 1983 Coordinates  
(1996 Adjustment)

County Project Coordinates

Northing 232865.9661

Easting 521435.1890

Date 5/21/02

Revision Date

3/21/13

I hereby certify that this United States public land survey monument record is correct and complete to the best of my knowledge and belief.

*Larry D. Hoium* Date 5/21/13

Larry D. Hoium, Anoka County Surveyor

Minnesota License Number 18165