

CERTIFICATE OF LOCATION OF GOVERNMENT CORNER

County of Anoka

State of Minnesota

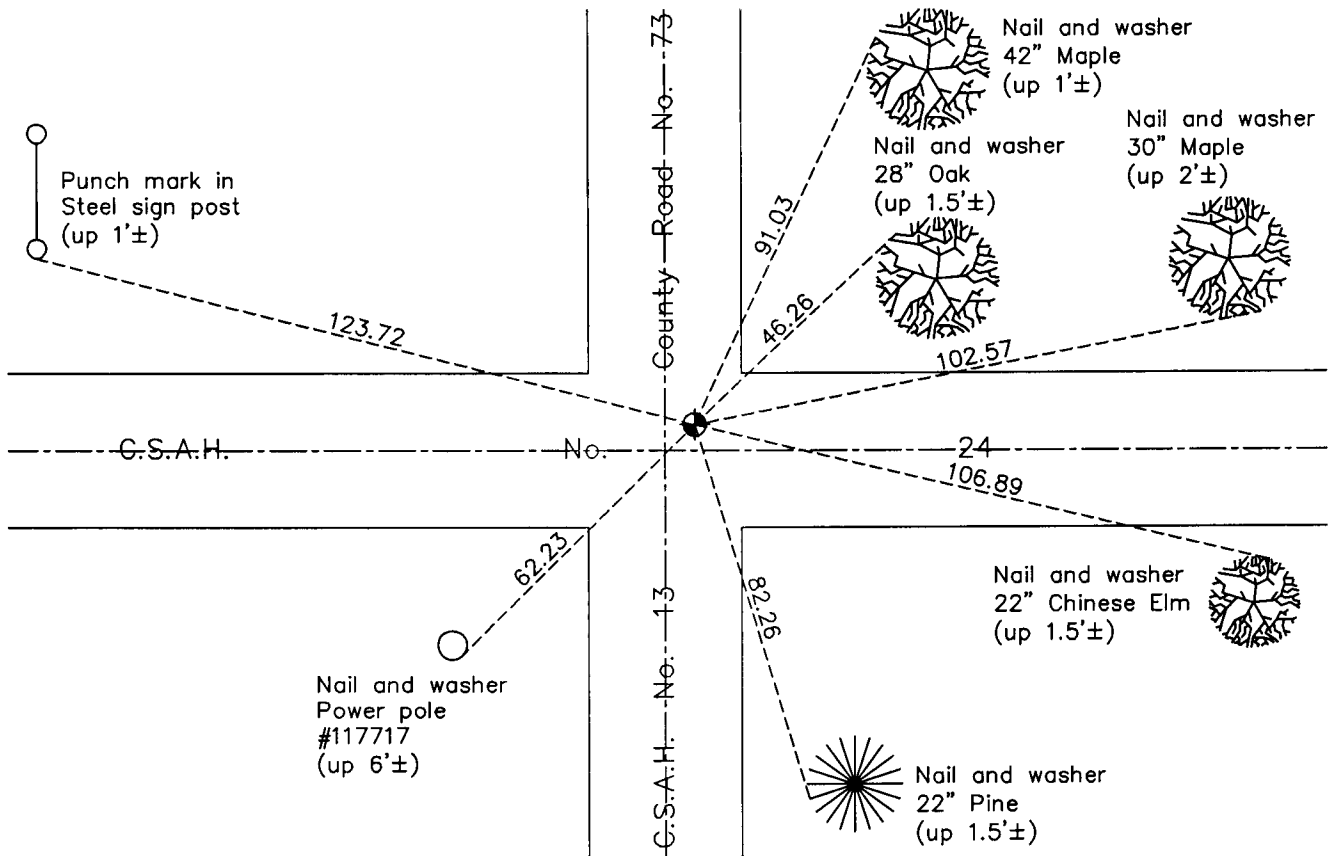
Northwest Corner of Sec. 31 Township 34 Range 23

On the 23rd day of February, 1962, the described corner was evidenced by a 1" iron bolt

and to perpetuate the location of said corner, at the exact location thereof, a permanent marker was placed consisting of a cast iron monument

AND on the 7th day of December, 2012, said permanent marker was found, raised to the surface and the ties were updated

Updated reference ties are as shown below.



N
W ANOKA COUNTY SURVEYOR E
S

Revision Date 3/27/12

N.A.D. 1983 Coordinates
(1996 Adjustment)

County Project Coordinates	
Northing	232732.2258
Easting	500338.5341
Date	5/15/02

I hereby certify that this United States public land survey monument record is correct and complete to the best of my knowledge and belief.

Larry D. Hoium Date 3/27/13

Larry D. Hoium, Anoka County Surveyor
Minnesota License Number 18165