

CERTIFICATE OF LOCATION OF GOVERNMENT CORNER

County of Anoka

State of Minnesota

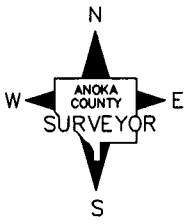
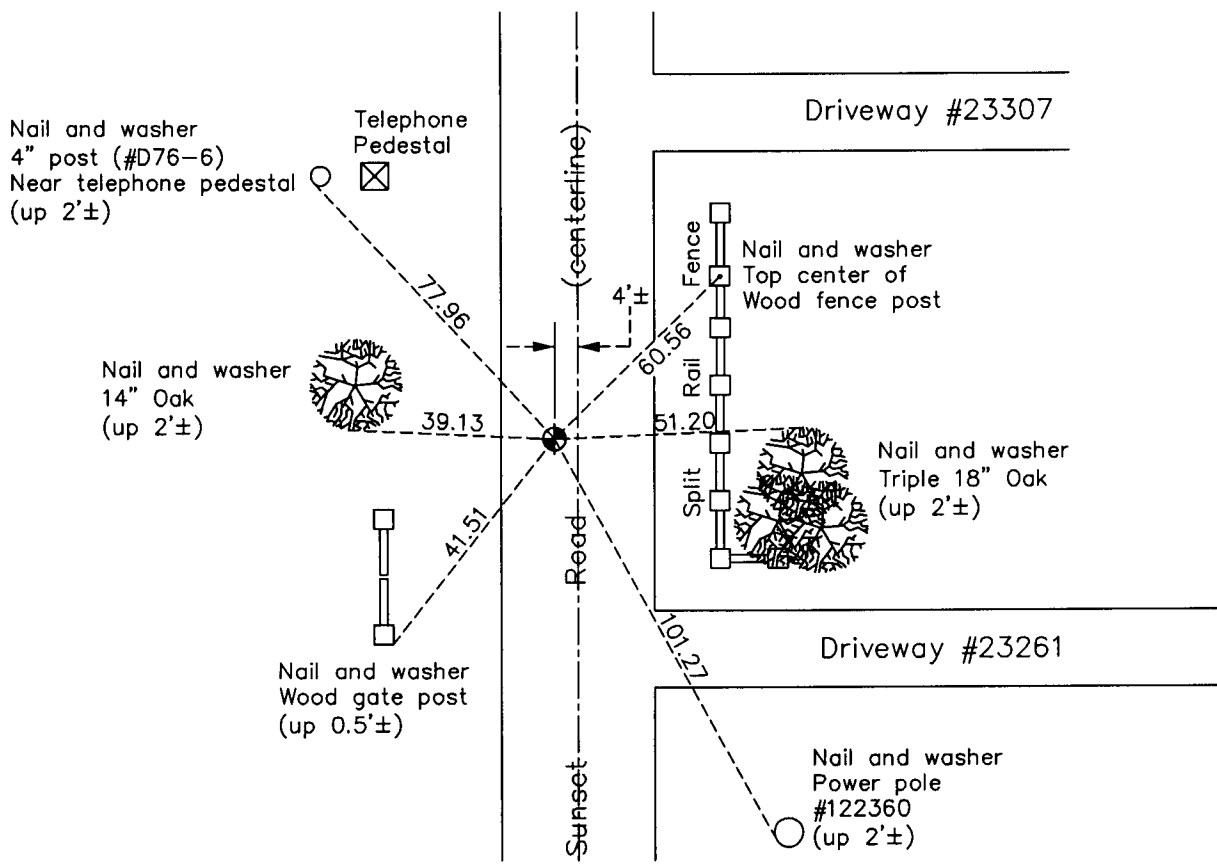
East 1/4 Corner of Sec. 36 Township 34 Range 23

On the 22nd day of June, 1967, the described corner was evidenced by a 3/4" iron pipe

and to perpetuate the location of said corner, at the exact location thereof, a permanent marker was placed consisting of a cast iron monument

AND on the 27th day of April, 2012, said permanent marker was found and the ties were updated

Updated reference ties are as shown below.



Revision Date
3/28/13

N.A.D. 1983 Coordinates
(1996 Adjustment)

County Project Coordinates	
Northing	<u>230196.5590</u>
Easting	<u>531980.3971</u>
Date	<u>5/22/02</u>

I hereby certify that this United States public land survey monument record is correct and complete to the best of my knowledge and belief.

Larry D. Hoium Date 3/28/13

Larry D. Hoium, Anoka County Surveyor
Minnesota License Number 18165