

# CERTIFICATE OF LOCATION OF GOVERNMENT CORNER

County of Anoka

State of Minnesota

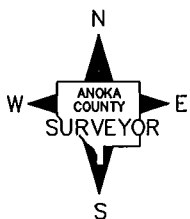
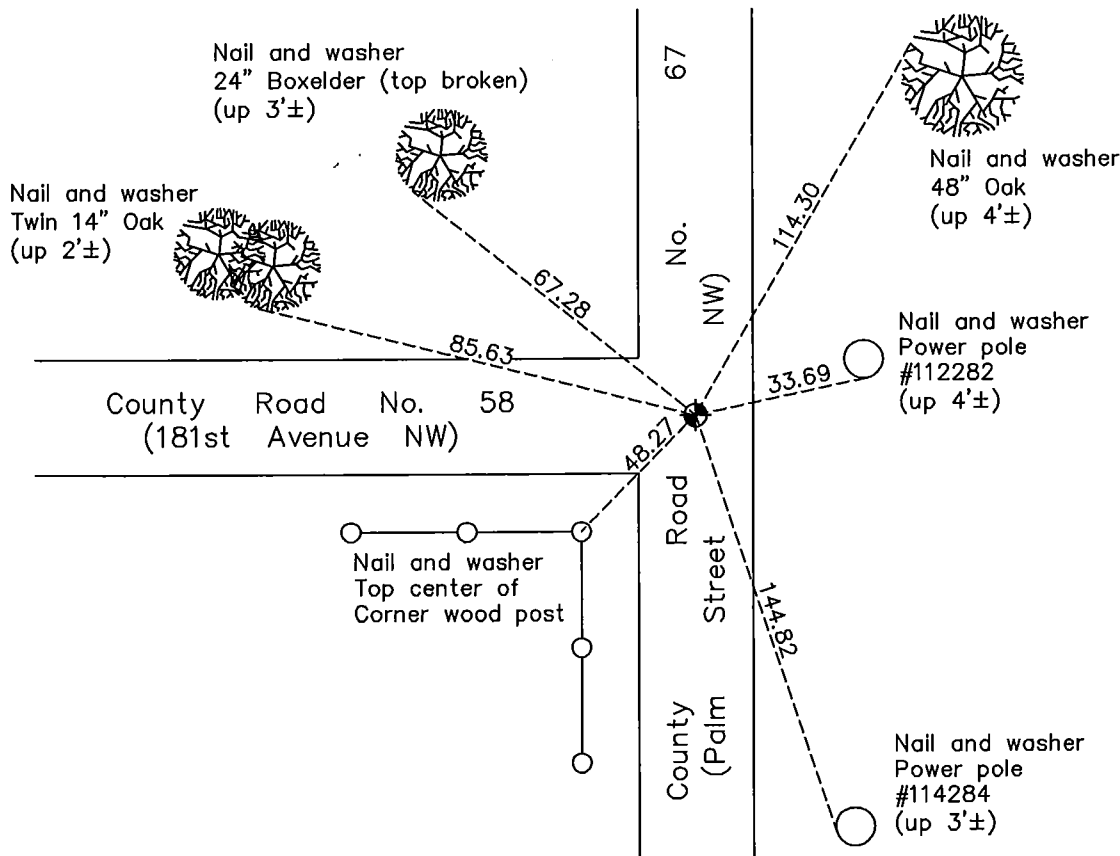
## Northeast Corner of Sec. 2 Township 32 Range 24

On the 22nd day of July, 1960, the described corner was evidenced by a granite monument under an iron pipe

and to perpetuate the location of said corner, at the exact location thereof, a permanent marker was placed consisting of a cast iron monument

AND on the 10th day of May, 2011, said permanent marker was found flush with the surface and the ties were updated

Updated reference ties are as shown below.



Revision Date

5/29/12

N.A.D. 1983 Coordinates  
(1996 Adjustment)

County Project Coordinates	
Northing	195852.4413
Easting	495066.5723
Date	7/25/00

I hereby certify that this United States public land survey monument record is correct and complete to the best of my knowledge and belief.

*Larry D. Hoium* Date 5/29/12

Larry D. Hoium, Anoka County Surveyor

Minnesota License Number 18165

# HISTORY OF GOVERNMENT CORNER

Page No. 2A

County of Anoka

State of Minnesota

## Northeast Corner of Sec. 2 Township 32 Range 24

### **CORNER HISTORY:**

**July 22, 1960** - Found granite monument under an iron pipe (down 2'±) and established ties to monument.

**July 22, 1965** - Replaced iron pipe with a new 1/2" iron pipe on top of granite monument and flush with the blacktop road surface. Updated ties.

**July 3, 1968** - Replaced 1/2" iron pipe with a cast iron monument on top of granite monument and flush with the blacktop road surface. Set P.K. nails 2.00' North and East of monument and updated ties.

July 22, 1971 - Found cast iron monument and updated ties.

July 16, 1975 - Raised cast iron monument to flush with the road surface and updated ties.

July 17, 1978 - Found cast iron monument and updated ties.

July 21, 1981 - Found cast iron monument and updated ties.

August 7, 1984 - Found cast iron monument and updated ties.

January 28, 1992 - Found cast iron monument and updated ties.

July 25, 2000 - Found cast iron monument and established NAD 1983 ( 1996 Adjustment) Anoka County Project Coordinates by Static GPS methods. Updated ties.

January 13, 2011 - Found cast iron monument flush with the road surface and updated ties.

May 10, 2011 - Found cast iron monument, loosened top for road overlay and updated ties.