

# CERTIFICATE OF LOCATION OF GOVERNMENT CORNER

County of Anoka

State of Minnesota

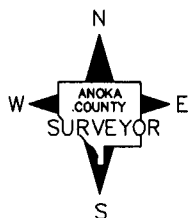
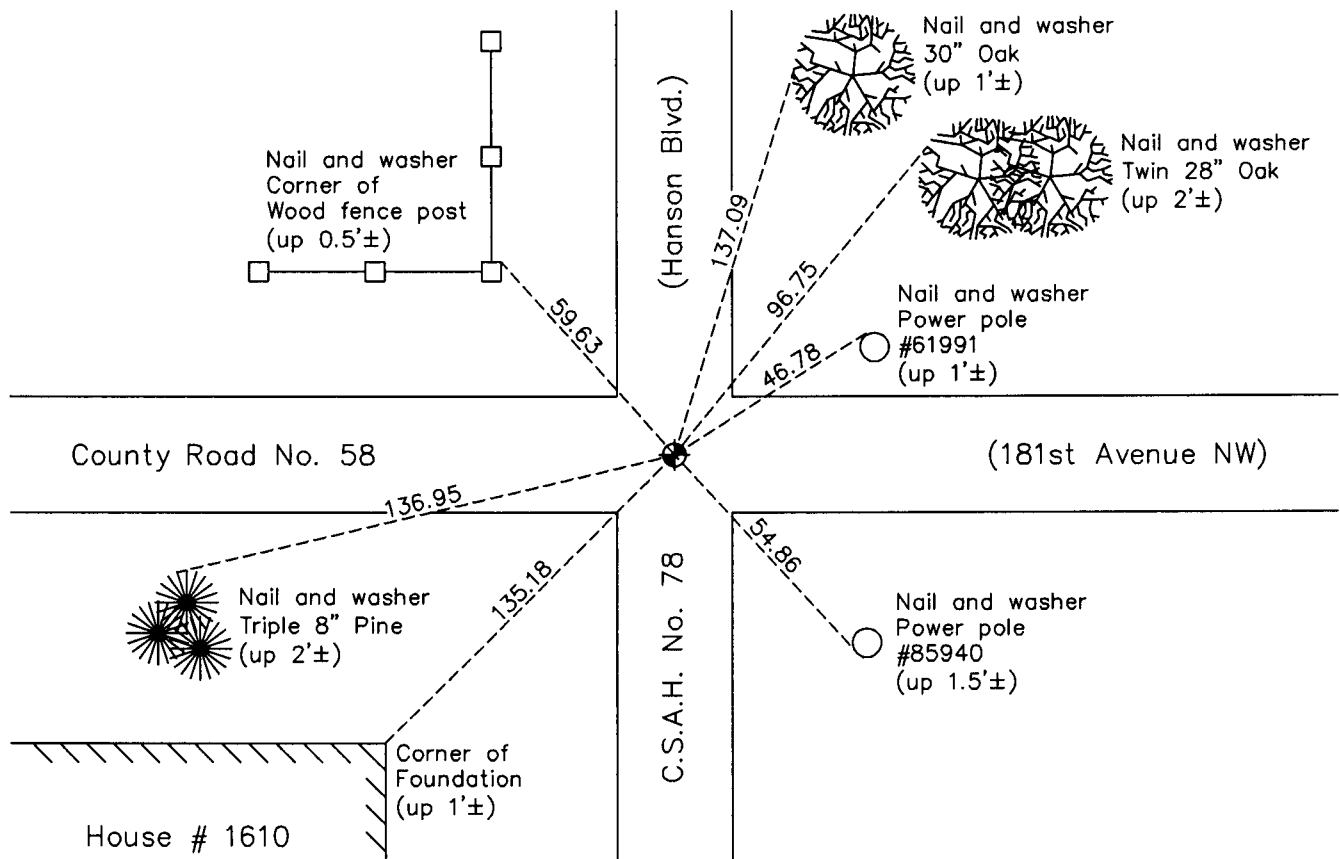
## Northwest Corner of Sec. 2 Township 32 Range 24

On the 19th day of September, 1962, the described corner was evidenced by area resurvey

and to perpetuate the location of said corner, at the exact location thereof, a permanent marker was placed consisting of a cast iron monument

AND on the 18th day of January, 2011, said permanent marker was found and the ties  
were updated

Updated reference ties are as shown below.



Revision Date

3/15/11

N.A.D. 1983 Coordinates  
(1996 Adjustment)

County Project Coordinates	
Northing	<u>195825.3202</u>
Easting	<u>489813.2327</u>
Date	<u>7/25/00</u>

I hereby certify that this United States public land survey monument record is correct and complete to the best of my knowledge and belief.

*Larry D. Hoium* Date 3/15/11

Larry D. Hoium, Anoka County Surveyor

Minnesota License Number 18165

# HISTORY OF GOVERNMENT CORNER

County of Anoka

State of Minnesota

## Northwest Corner of Sec. 2 Township 32 Range 24

### **CORNER HISTORY:**

September 19, 1962 - Set cast iron monument using area resurvey and established ties to monument.

August 13, 1964 - Found cast iron monument and updated ties.

July 5, 1968 - Found cast iron monument and updated ties.

June 19, 1972 - Found cast iron monument and updated ties.

May 24, 1976 - Found cast iron monument and updated ties.

May 29, 1979 - Found cast iron monument and updated ties.

June 17, 1982 - Found cast iron monument and updated ties.

August 1, 1988 - Found cast iron monument and updated ties.

July 14, 1993 - Found cast iron monument and updated ties.

July 25, 2000 - Found cast iron monument and established NAD 1983 ( 1996 Adjustment) Anoka County Project Coordinates by Static GPS methods. Updated ties.

January 18, 2011 - Found cast iron monument and updated ties.