

# CERTIFICATE OF LOCATION OF GOVERNMENT CORNER

County of Anoka

State of Minnesota

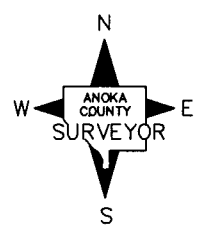
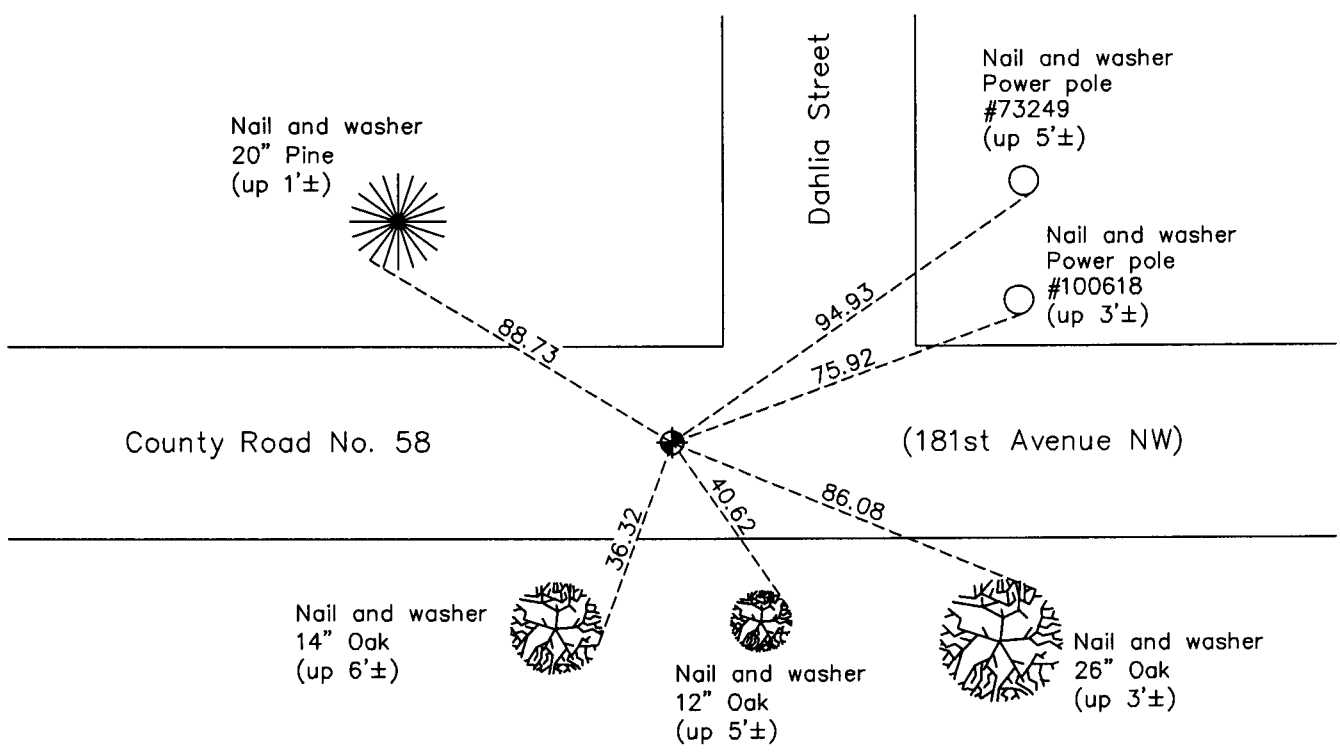
## North 1/4 Corner of Sec. 4 Township 32 Range 24

On the 27th day of September, 1961, the described corner was evidenced by area resurvey

and to perpetuate the location of said corner, at the exact location thereof, a permanent marker was placed consisting of a cast iron monument

AND on the 4th day of January, 2011, said permanent marker was found flush with the surface and the ties were updated

Updated reference ties are as shown below.



Revision Date  
3/15/11

N.A.D. 1983 Coordinates  
 (1996 Adjustment)

County Project Coordinates	
Northing	<u>195860.4035</u>
Easting	<u>481929.4526</u>
Date	<u>7/25/00</u>

I hereby certify that this United States public land survey monument record is correct and complete to the best of my knowledge and belief.

*Larry D. Hoium* Date 3/15/11

Larry D. Hoium, Anoka County Surveyor  
 Minnesota License Number 18165

# HISTORY OF GOVERNMENT CORNER

Page No. 6

County of Anoka

State of Minnesota

## North 1/4 Corner of Sec. 4 Township 32 Range 24

### **CORNER HISTORY:**

**September 27, 1961** - Set 1/2" iron pipe in centerline of County Road No. 58 using government proration on a straight line between the Northwest corner and the Northeast corner of Section 4 and established ties to monument.

August 13, 1964 - Found 1/2" iron pipe and updated ties.

July 5, 1968 - Replaced 1/2" iron pipe with a cast iron monument and set P.K. nails 2.00' North and East. Updated ties.

June 20, 1972 - Found cast iron monument and updated ties.

May 24, 1976 - Found cast iron monument and updated ties.

May 29, 1979 - Found cast iron monument and updated ties.

June 23, 1982 - Found cast iron monument and updated ties.

May 30, 1985 - Found cast iron monument and updated ties.

July 29, 1988 - Found cast iron monument and updated ties.

July 14, 1993 - Found cast iron monument and updated ties.

May 11, 1999 - Set construction ties and removed cast iron monument prior to road construction.

May 11, 1999 - Set cast iron monument flush with surface after road construction using construction ties. Updated ties.

July 25, 2000 - Found cast iron monument and established NAD 1983 ( 1996 Adjustment) Anoka County Project Coordinates by Static GPS methods. Updated ties.

January 4, 2011 - Found cast iron monument flush with the road surface and updated ties.