

CERTIFICATE OF LOCATION OF GOVERNMENT CORNER

County of Anoka

State of Minnesota

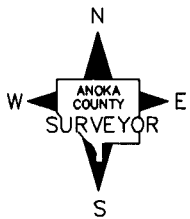
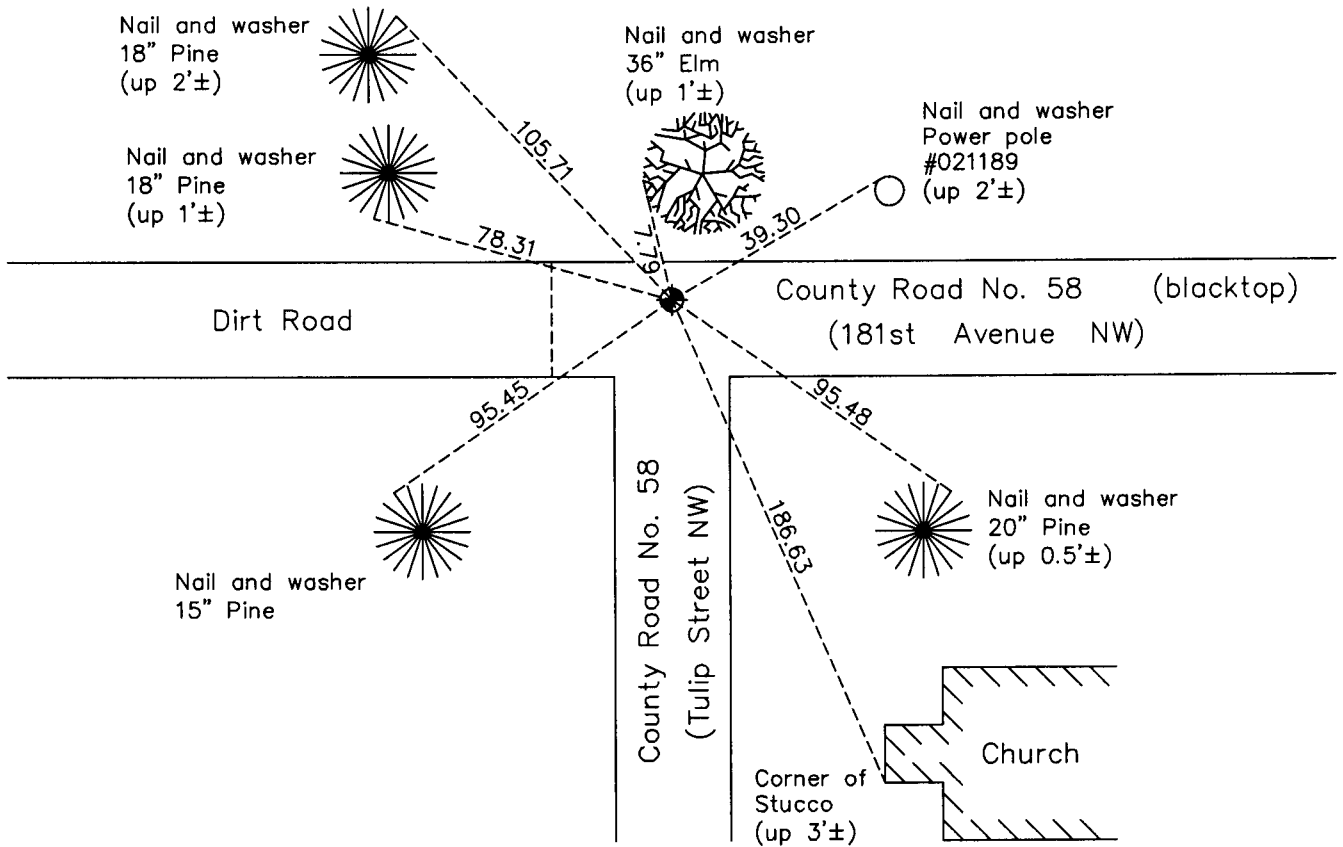
North 1/4 Corner of Sec. 5 Township 32 Range 24

On the 31st day of May, 1963, the described corner was evidenced by a granite monument from highway ties

and to perpetuate the location of said corner, at the exact location thereof, a permanent marker was placed consisting of a cast iron monument set in concrete located on top of the granite monument

AND on the 22nd day of December, 2010, said permanent marker was found flush with the surface and the ties were updated

Updated reference ties are as shown below.



Revision Date
04/04/11

N.A.D. 1983 Coordinates
(1996 Adjustment)

County Project Coordinates	
Northing	195989.3900
Easting	476675.9344
Date	10/03/00

I hereby certify that this United States public land survey monument record is correct and complete to the best of my knowledge and belief.

Larry D. Hoium Date 4/04/11

Larry D. Hoium, Anoka County Surveyor
Minnesota License Number 18165

HISTORY OF GOVERNMENT CORNER

Page No. 7A

County of Anoka

State of Minnesota

North 1/4 Corner of Sec. 5 Township 32 Range 24

CORNER HISTORY:

May 31, 1963 - Found 8" granite monument set down 1' using Anoka County Highway Department ties. Set iron pipe on north side of monument and established ties to monument.

July 28, 1965 - Found 8" granite monument and updated ties.

July 3, 1968 - Found 8" granite monument and updated ties.

July 26, 1971 - Found 8" granite monument and updated ties.

July 15, 1975 - Found 8" granite monument and updated ties.

July 17, 1978 - Found 8" granite monument and updated ties.

July 15, 1987 - Found 8" granite monument and updated ties.

July 9, 1992 - Found 8" granite monument and updated ties.

November 22, 1993 - Found 8" granite monument and set a partial cast iron monument in concrete on top of granite monument. Updated ties.

October 3, 2000 - Found cast iron monument and established NAD 1983 (1996 Adjustment) Anoka County Project Coordinates by Static GPS methods. Updated ties.

December 22, 2010 - Found cast iron monument flush with the road surface and updated ties.