

CERTIFICATE OF LOCATION OF GOVERNMENT CORNER

County of Anoka

State of Minnesota

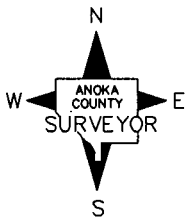
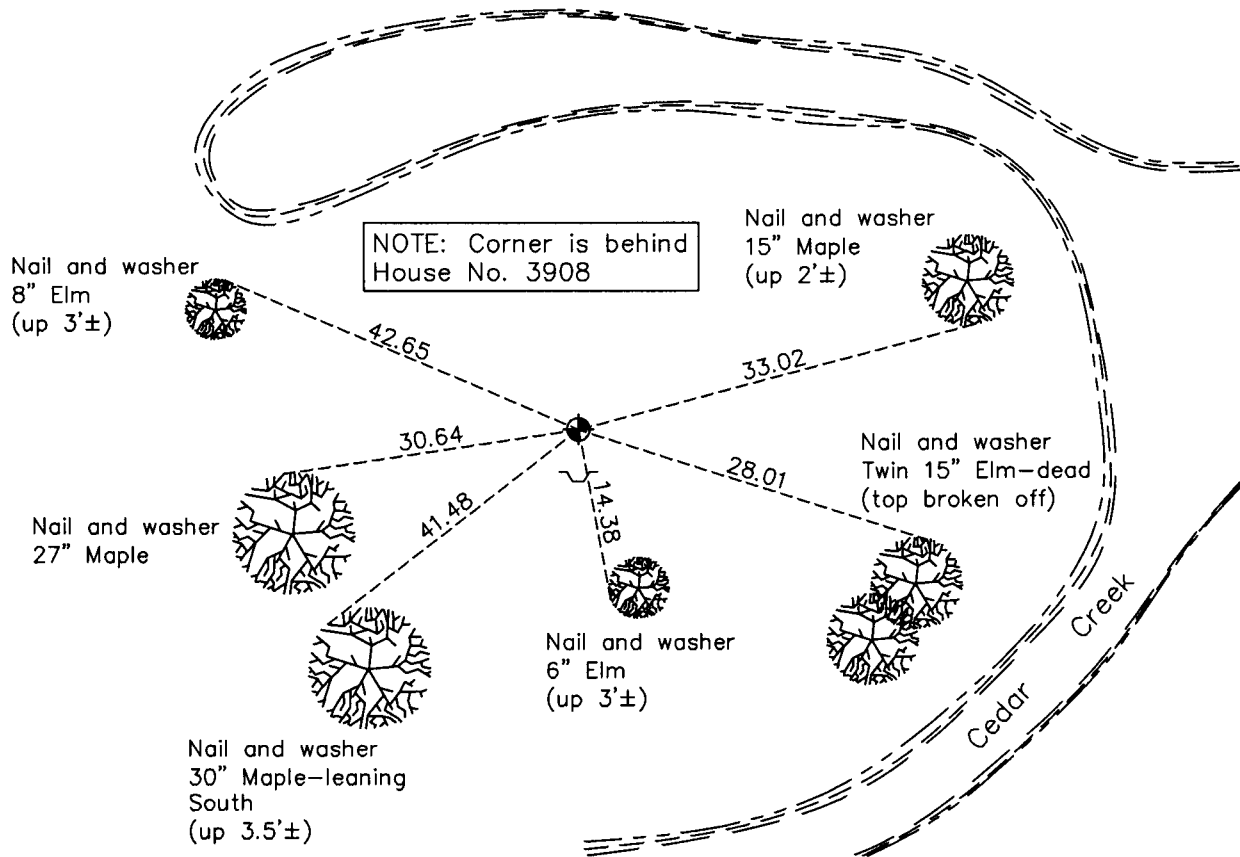
Northwest Corner of Sec. 5 Township 32 Range 24

On the 15th day of June, 1965, the described corner was evidenced by a concrete monument

and to perpetuate the location of said corner, at the exact location thereof, a permanent marker was placed consisting of a cast iron monument with a sign and post on the south side

AND on the 14th day of February, 2011, said permanent marker was found broken. Replaced it with a red & white square steel Telspar monument and 'County Surveyor' cap. Ties were updated.

Updated reference ties are as shown below.



Revision Date

7/18/11

N.A.D. 1983 Coordinates
(1996 Adjustment)

County Project Coordinates	
Northing	<u>196028.4069</u>
Easting	<u>474045.0990</u>
Date	<u>1/24/01</u>

I hereby certify that this United States public land survey monument record is correct and complete to the best of my knowledge and belief.

Larry D. Hoium Date 7/18/11

Larry D. Hoium, Anoka County Surveyor

Minnesota License Number 18165

HISTORY OF GOVERNMENT CORNER

Page No. 8

County of Anoka

State of Minnesota

Northwest Corner of Sec. 5 Township 32 Range 24

CORNER HISTORY:

June 15, 1965 - Found 4" square concrete monument set up 1' above surface with an iron pipe on the north side of monument. Established ties to monument.

Summer 1968 - Found location of monument wet.

June 14, 1972 - Found 4" square concrete monument and updated ties.

May 25, 1976 - Found 4" square concrete monument and updated ties.

May 29, 1979 - Found 4" square concrete monument and updated ties.

October 28, 1986 - Replaced broken concrete monument with a cast iron monument set flush with the surface. Also set sign and post on south side of monument. Updated ties.

July 27, 1993 - Found cast iron monument and updated ties.

January 24, 2001 - Found cast iron monument and established NAD 1983 (1996 Adjustment) Anoka County Project Coordinates by Static GPS methods. Updated ties.

December 27, 2010 - Found cast iron monument broken off.

February 14, 2011 - Replaced broken off cast iron monument with a red and white 2" square steel Telspar monument set up 1'± with an Anoka County cap and punchmark at location of corner. Verified position by Static GPS and VRS methods. Updated ties.