

CERTIFICATE OF LOCATION OF GOVERNMENT CORNER

County of Anoka

State of Minnesota

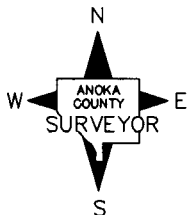
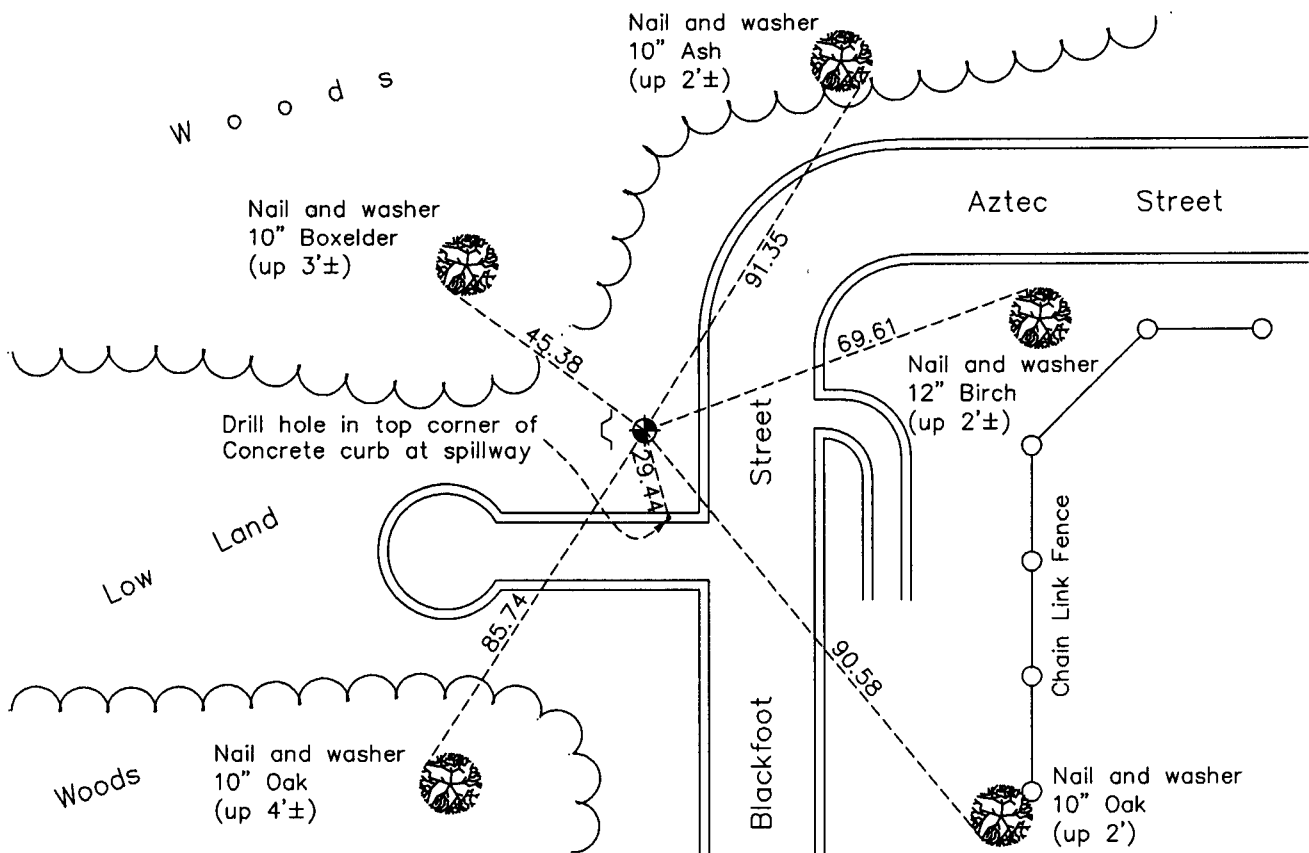
East 1/4 Corner of Sec. 6 Township 32 Range 24

On the 17th day of May, 1966, the described corner was evidenced by area resurvey

and to perpetuate the location of said corner, at the exact location thereof, a permanent marker was placed consisting of a cast iron monument

AND on the 4th day of January, 2011, said permanent marker was found down 0.5'± and the ties were updated. A sign and post was set 1'± west of monument February 16, 2011.

Updated reference ties are as shown below.



Revision Date

4/05/11

N.A.D. 1983 Coordinates
(1996 Adjustment)

County Project Coordinates	
Northing	<u>193491.2602</u>
Easting	<u>474058.0058</u>
Date	<u>10/03/00</u>

I hereby certify that this United States public land survey monument record is correct and complete to the best of my knowledge and belief.

Larry D. Hoium Date 4/05/11

Larry D. Hoium, Anoka County Surveyor

Minnesota License Number 18165

HISTORY OF GOVERNMENT CORNER

Page No. 10

County of Anoka

State of Minnesota

East 1/4 Corner of Sec. 6 Township 32 Range 24

CORNER HISTORY:

May 17, 1966 - Set cast iron monument flush with the surface using area resurvey.

December 1, 1967 - Found cast iron monument down 2.8'±. Set new cast iron monument on top of old cast iron monument and down 0.5'±. Verified location using found right-of-way iron pipes set by Leroy Winner and two remaining ties. Updated ties.

July 8, 1968 - Found cast iron monument and updated ties.

August 20, 1968 - Found cast iron monument and updated ties.

June 14, 1972 - Found cast iron monument and updated ties.

May 24, 1976 - Found cast iron monument and updated ties.

May 30, 1979 - Found cast iron monument and updated ties.

June 21, 1982 - Found cast iron monument and updated ties.

June 5, 1985 - Found cast iron monument and updated ties.

August 12, 1988 - Found cast iron monument and updated ties.

July 27, 1993 - Found cast iron monument and updated ties.

October 3, 2000- Found cast iron monument and established NAD 1983 (1996 Adjustment) Anoka County Project Coordinates by Static GPS methods. Updated ties.

January 4, 2011 - Found cast iron monument down 0.5'± and updated ties.

February 16, 2011 - Set sign and post 1'± west of cast iron monument.