

# CERTIFICATE OF LOCATION OF GOVERNMENT CORNER

County of Anoka

State of Minnesota

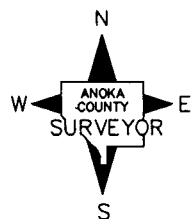
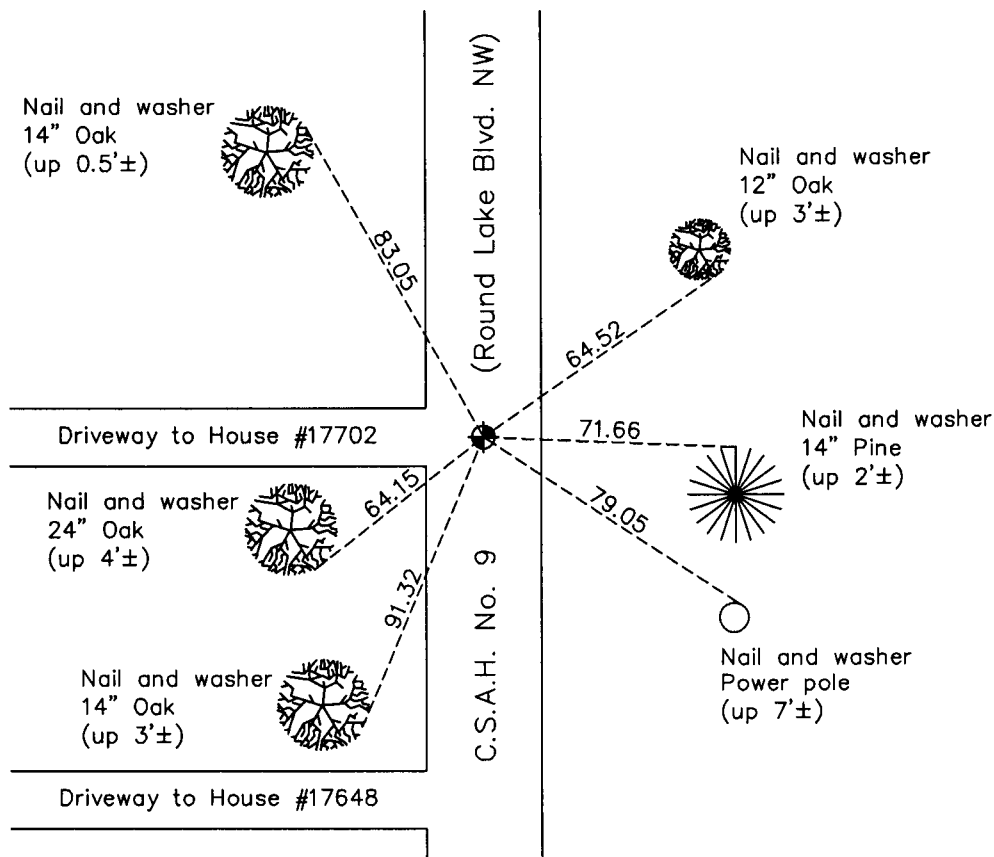
West 1/4 Corner of Sec. 4 Township 32 Range 24

On the 3rd day of June, 1965, the described corner was evidenced by area resurvey

and to perpetuate the location of said corner, at the exact location thereof, a permanent marker was placed consisting of a cast iron monument

AND on the 11th day of February, 2011, said permanent marker was found and the ties  
were updated

Updated reference ties are as shown below.



Revision Date

4/05/11

N.A.D. 1983 Coordinates  
(1996 Adjustment)

| County Project Coordinates |             |
|----------------------------|-------------|
| Northing                   | 193499.2958 |
| Easting                    | 479326.4044 |
| Date                       | 8/07/00     |

I hereby certify that this United States public land survey monument record is correct and complete to the best of my knowledge and belief.

*Larry D. Hoium* Date 4/05/11

Larry D. Hoium, Anoka County Surveyor

Minnesota License Number 18165

# HISTORY OF GOVERNMENT CORNER

Page No. 11

County of Anoka

State of Minnesota

West 1/4 Corner of Sec. 4 Township 32 Range 24

## **CORNER HISTORY:**

September 27, 1961 - Set 1/2" iron pipe in centerline of Lake George Road (blacktop) using old survey distance from the north and established ties to monument.

August 22, 1964 - Found 1/2" iron pipe and updated ties.

June 3, 1965 - Replaced 1/2" iron pipe with a cast iron monument set flush with the road surface and updated ties.

July 8, 1968 - Found cast iron monument and updated ties.

June 14, 1972 - Found cast iron monument and updated ties.

May 24, 1976 - Found cast iron monument and updated ties.

May 29, 1979 - Found cast iron monument and updated ties.

September 3, 1982 - Found cast iron monument and updated ties.

August 10, 1988 - Found cast iron monument and updated ties.

July 15, 1993 - Found cast iron monument and updated ties.

August 7, 2000 - Found cast iron monument and established NAD 1983 (1996 Adjustment) Anoka County Project Coordinates by Static GPS methods. Updated ties.

July 19, 2001 - Set construction ties and removed cast iron monument prior to road construction.

DATE UNKNOWN - Set cast iron monument after road construction using construction ties.

February 11, 2011 - Found cast iron monument and updated ties.