

CERTIFICATE OF LOCATION OF GOVERNMENT CORNER

County of Anoka

State of Minnesota

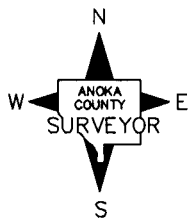
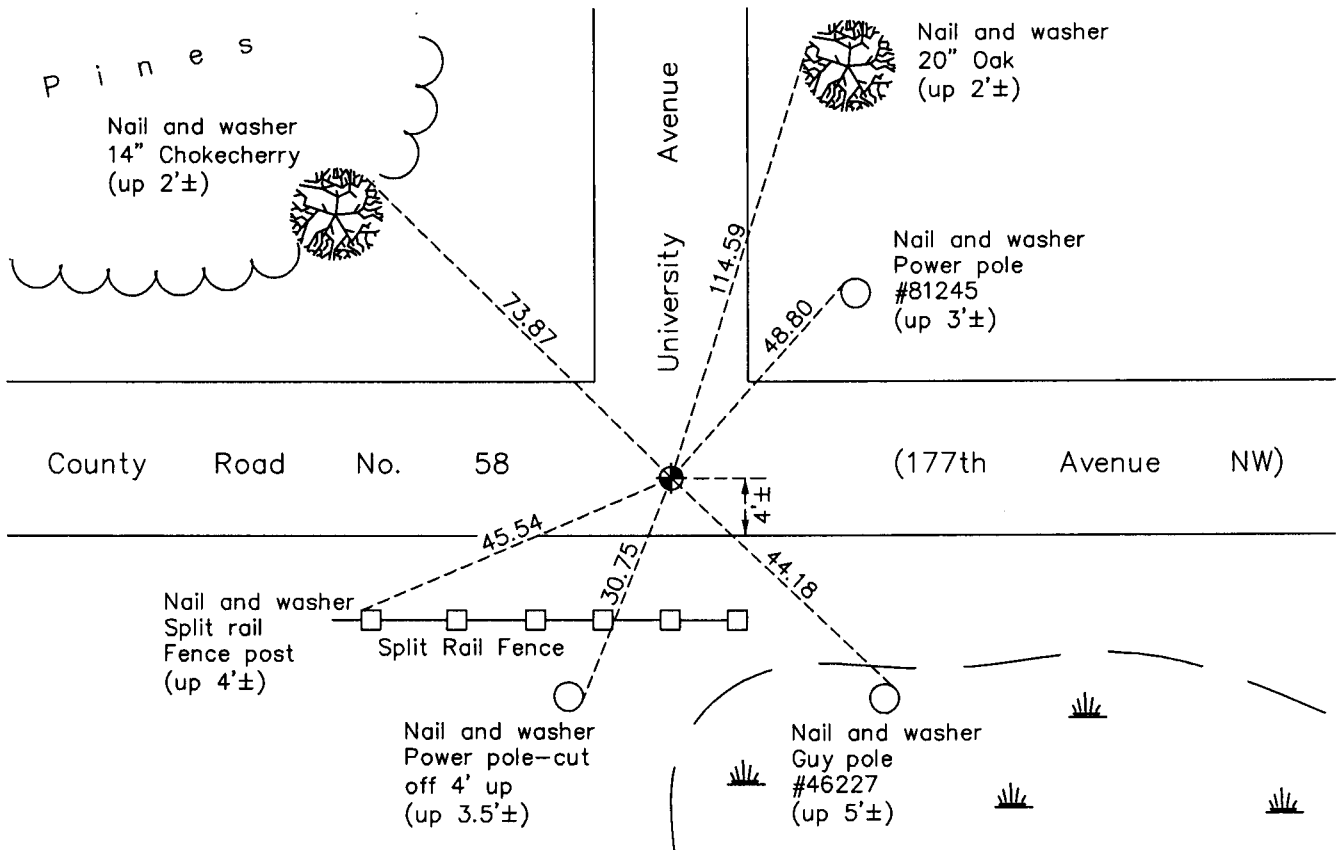
East 1/4 Corner of Sec. 1 Township 32 Range 24

On the 25th day of September, 1962, the described corner was evidenced by area resurvey

and to perpetuate the location of said corner, at the exact location thereof, a permanent marker was placed consisting of a cast iron monument

AND on the 19th day of January, 2011, said permanent marker was found and the ties were updated

Updated reference ties are as shown below.



Revision Date
4/06/11

N.A.D. 1983 Coordinates
(1996 Adjustment)

County Project Coordinates	
Northing	193197.9195
Easting	500359.1096
Date	7/25/00

I hereby certify that this United States public land survey monument record is correct and complete to the best of my knowledge and belief.

Larry D. Hoium Date 4/06/11

Larry D. Hoium, Anoka County Surveyor

Minnesota License Number 18165

HISTORY OF GOVERNMENT CORNER

Page No. 15

County of Anoka

State of Minnesota

East 1/4 Corner of Sec. 1 Township 32 Range 24

CORNER HISTORY:

September 25, 1962 - Set cast iron monument using area resurvey and established ties to monument.

August 13, 1964 - Found cast iron monument and updated ties.

July 19, 1966 - Found cast iron monument and updated ties.

July 12, 1968 - Found cast iron monument and updated ties.

June 15, 1972 - Found cast iron monument and updated ties.

May 24, 1976 - Found cast iron monument and updated ties.

May 30, 1979 - Found cast iron monument and updated ties.

June 22, 1982 - Found cast iron monument and updated ties.

June 4, 1985 - Found cast iron monument and updated ties.

August 11, 1988 - Found cast iron monument and updated ties.

July 23, 1993 - Found cast iron monument and updated ties.

July 25, 2000 - Found cast iron monument and established NAD 1983 (1996 Adjustment) Anoka County Project Coordinates by Static GPS methods. Updated ties.

January 19, 2011 - Found cast iron monument and updated ties.