

CERTIFICATE OF LOCATION OF GOVERNMENT CORNER

County of Anoka

State of Minnesota

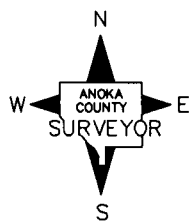
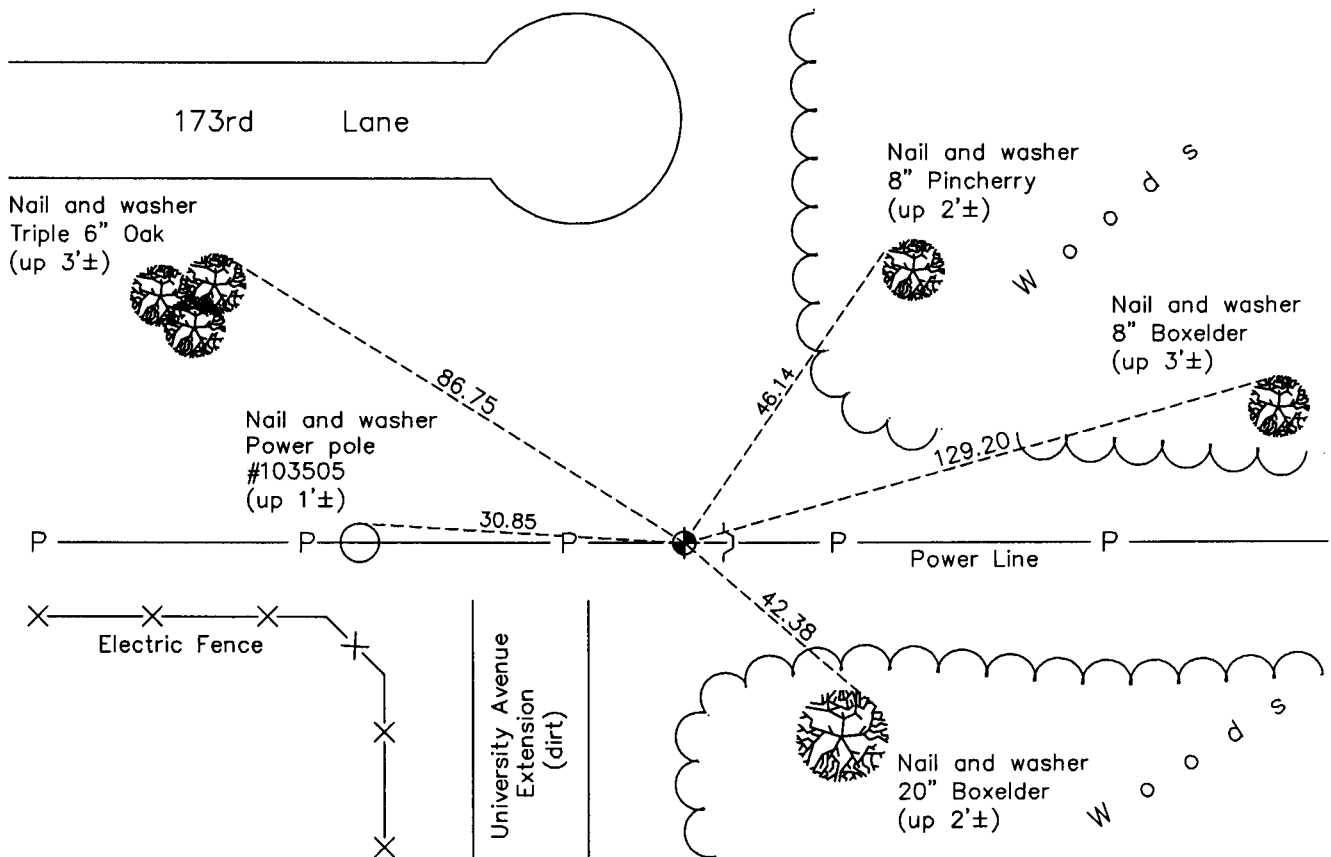
Northeast Corner of Sec. 12 Township 32 Range 24

On the 13th day of August, 1964, the described corner was evidenced by a 1 1/2" iron pipe

and to perpetuate the location of said corner, at the exact location thereof, a permanent marker was placed consisting of a cast iron monument with a sign and post on the east side

AND on the 24th day of January, 2011, said permanent marker was found down 0.4'± and the ties were updated

Updated reference ties are as shown below.



Revision Date
4/06/11

N.A.D. 1983 Coordinates
(1996 Adjustment)

County Project Coordinates	
Northing	190561.7543
Easting	500384.4272
Date	7/25/00

I hereby certify that this United States public land survey monument record is correct and complete to the best of my knowledge and belief.

Larry D. Hoium Date 4/06/11

Larry D. Hoium, Anoka County Surveyor

Minnesota License Number 18165

HISTORY OF GOVERNMENT CORNER

County of Anoka

State of Minnesota

Northeast Corner of Sec. 12 Township 32 Range 24

CORNER HISTORY:

August 13, 1964 - Found 1 1/4" iron pipe from ties by N.C. Hoium dated May 1960. Established ties to monument.

July 19, 1966 - Found 1 1/4" iron pipe and updated ties.

July 12, 1968 - Found 1 1/4" iron pipe and updated ties.

June 12, 1972 - Found 1 1/4" iron pipe and updated ties.

May 25, 1976 - Replaced 1 1/4" iron pipe with a cast iron monument. Updated ties.

May 30, 1979 - Found cast iron monument and updated ties.

July 15, 1980 - Replaced broken cast iron monument with a new cast iron monument and set sign and post on east side of monument. Updated ties.

June 22, 1982 - Found cast iron monument and updated ties.

August 11, 1985 - Found cast iron monument and updated ties.

July 23, 1993 - Found cast iron monument and updated ties.

July 25, 2000 - Found cast iron monument and established NAD 1983 (1996 Adjustment) Anoka County Project Coordinates by Static GPS methods. Updated ties.

January 24, 2011 - Found cast iron monument down 0.4'± and updated ties.