

CERTIFICATE OF LOCATION OF GOVERNMENT CORNER

County of Anoka

State of Minnesota

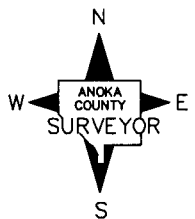
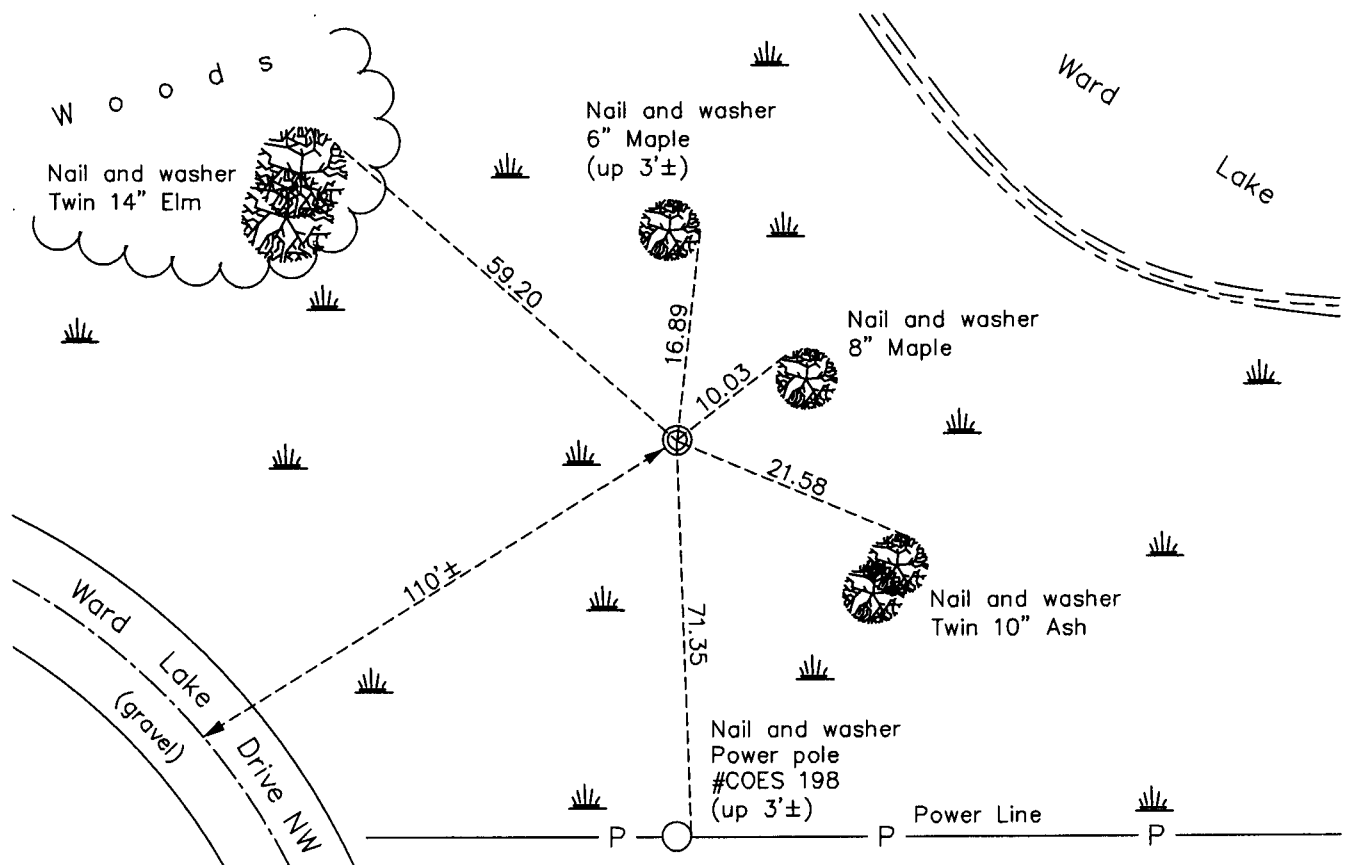
Southwest Corner of Sec. 1 Township 32 Range 24

On the 7th day of February, 1963, the described corner was evidenced by area resurvey

and to perpetuate the location of said corner, at the exact location thereof, a permanent marker was placed consisting of a red and white iron pipe

AND on the 17th day of February, 2011, said permanent marker was found up 4'± and the ties were updated. A sign and post was set 1'± north of the iron pipe.

Updated reference ties are as shown below.



Revision Date
4/08/11

N.A.D. 1983 Coordinates
(1996 Adjustment)

County Project Coordinates	
Northing	190639.5897
Easting	495172.0072
Date	11/30/00

I hereby certify that this United States public land survey monument record is correct and complete to the best of my knowledge and belief.

Larry D. Hoium Date 4/08/11

Larry D. Hoium, Anoka County Surveyor

Minnesota License Number 18165

HISTORY OF GOVERNMENT CORNER

Page No. 18

County of Anoka

State of Minnesota

Southwest Corner of Sec. 1 Township 32 Range 24

CORNER HISTORY:

February 7, 1963 - Set 1 1/2" X 11' iron pipe up 4' in swamp painted with 6" red and white stripes using area resurvey and established ties to monument.

July 11, 1968 - Too wet to access corner.

June 12, 1972 - Found red and white 1 1/2" iron pipe and updated ties.

May 25, 1976 - Found red and white 1 1/2" iron pipe and updated ties.

June 8, 1979 - Found red and white 1 1/2" iron pipe and updated ties.

January 4, 1980 - Straightened red and white 1 1/2" iron pipe up 4'± using ties and updated ties.

May 31, 1985 - Found red and white 1 1/2" iron pipe and updated ties.

August 12, 1988 - Found red and white 1 1/2" iron pipe and updated ties.

November 30, 2000 - Found red and white 1 1/2" iron pipe and established NAD 1983 (1996 Adjustment) Anoka County Project Coordinates by Static GPS methods. Updated ties.

October 14, 2010 - Found red and white 1 1/2" iron pipe up 4'± and updated ties. Pipe is rusty and needs new paint.

February 17, 2011 - Set sign and post 1'± north of red and white iron pipe.