

CERTIFICATE OF LOCATION OF GOVERNMENT CORNER

County of Anoka

State of Minnesota

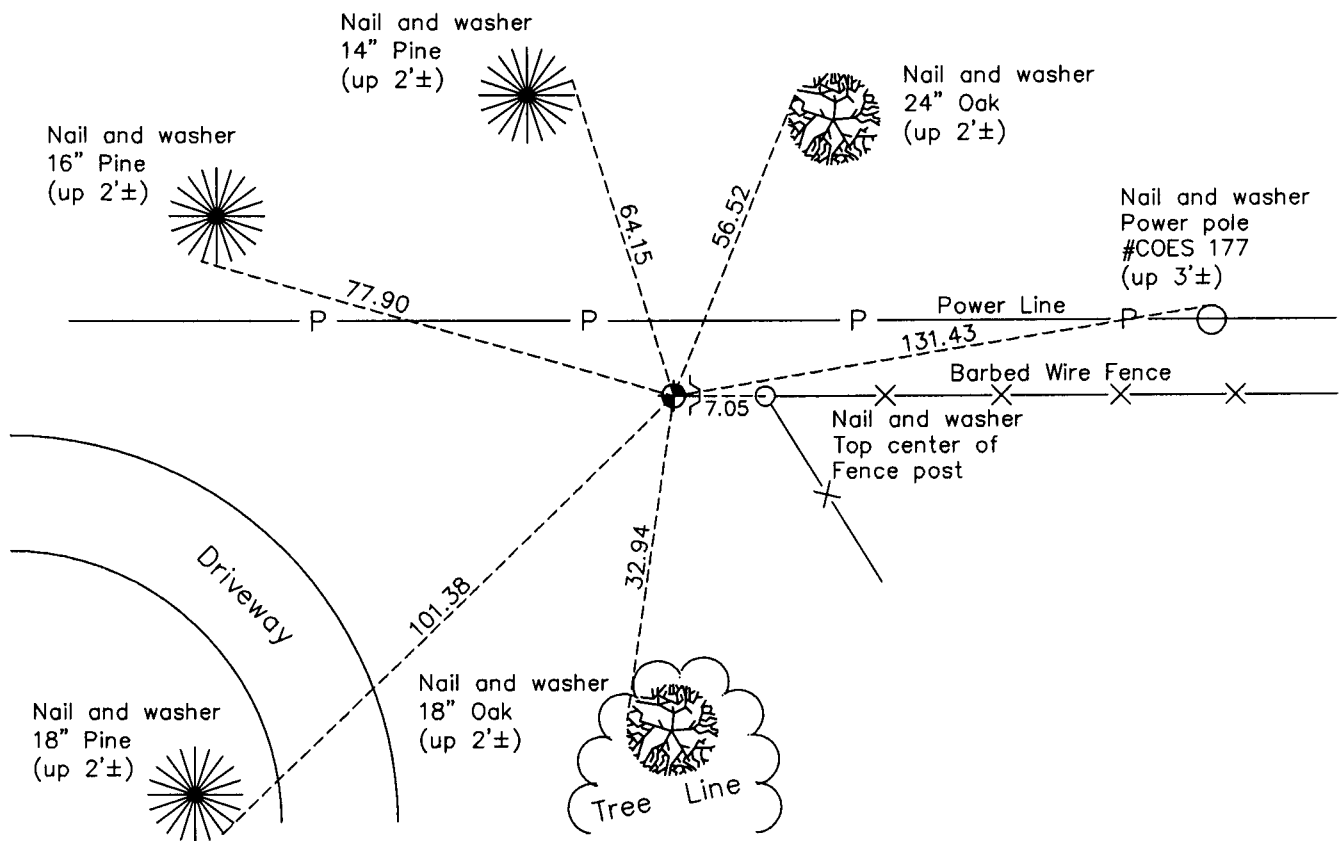
North 1/4 Corner of Sec. 10 Township 32 Range 24

On the 25th day of February, 1963, the described corner was evidenced by area resurvey

and to perpetuate the location of said corner, at the exact location thereof, a permanent marker was placed consisting of a cast iron monument with a sign and post on the east side. The original cast iron monument is in place 4'± down.

AND on the 15th day of February, 2011, said permanent marker was found down 1'± and the ties were updated

Updated reference ties are as shown below.



N
W ANOKA COUNTY SURVEYOR E
S
Revision Date
4/11/11

N.A.D. 1983 Coordinates
(1996 Adjustment)

County Project Coordinates	
Northing	190679.4988
Easting	487255.2234
Date	5/06/02

I hereby certify that this United States public land survey monument record is correct and complete to the best of my knowledge and belief.

Larry D. Hoium Date 4/11/11
 Larry D. Hoium, Anoka County Surveyor
 Minnesota License Number 18165

HISTORY OF GOVERNMENT CORNER

Page No. 21

County of Anoka

State of Minnesota

North 1/4 Corner of Sec. 10 Township 32 Range 24

CORNER HISTORY:

February 25, 1963 - Set railroad spike down 0.1'± below surface of trail using area resurvey and established ties to monument.

April 18, 1963 - Replaced railroad spike with a cast iron monument set down 0.4'± below surface of trail. Updated ties.

August 14, 1964 - Found cast iron monument and updated ties.

July 11, 1968 - Found cast iron monument and updated ties.

June 28, 1972 - Found cast iron monument and updated ties.

May 26, 1976 - Found cast iron monument and updated ties.

May 31, 1979 - Replaced broken cast iron monument with a new cast iron monument set down 1.5'± below surface of trail. Updated ties.

June 18, 1982 - Found cast iron monument and updated ties.

June 6, 1985 - Found cast iron monument and updated ties.

August 12, 1988 - Found cast iron monument and updated ties.

July 21, 1993 - Found cast iron monument and updated ties.

May 6, 2002 - Found cast iron monument with a sign and post on east side and established NAD 1983 (1996 Adjustment) Anoka County Project Coordinates by Static GPS methods. Updated ties. Original cast iron monument is in place down 4'±. Date second (top) cast iron monument and sign and post were set is unknown.

January 15, 2011 - Found cast iron monument down 1'± and updated ties.