

# CERTIFICATE OF LOCATION OF GOVERNMENT CORNER

County of Anoka

State of Minnesota

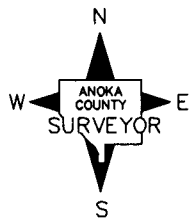
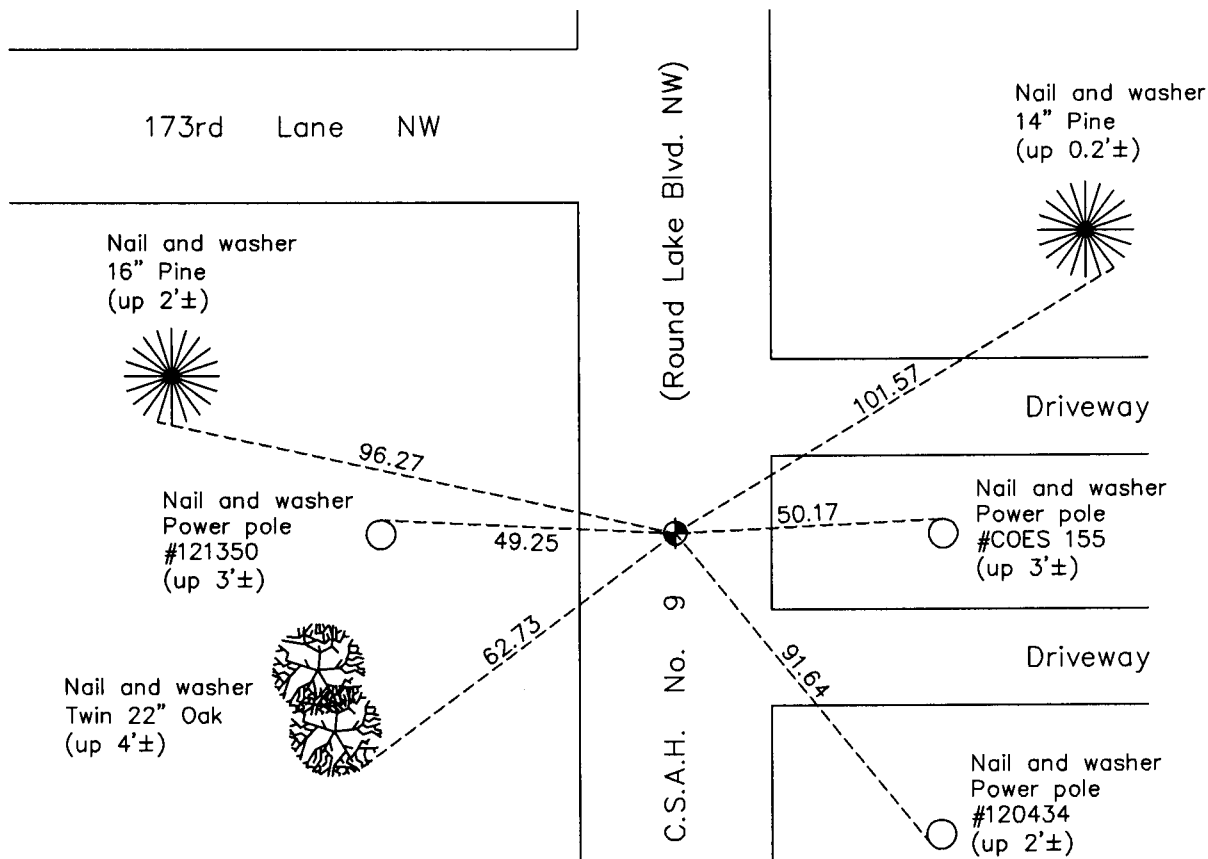
## Southwest Corner of Sec. 4 Township 32 Range 24

On the 7th day of July, 1960, the described corner was evidenced by an iron pipe  
over a granite monument found by the Highway Department

and to perpetuate the location of said corner, at the exact location thereof, a permanent marker  
 was placed consisting of a cast iron monument

AND on the 11th day of February, 2011, said permanent marker was found and the ties  
were updated

Updated reference ties are as shown below.



Revision Date  
4/14/11

N.A.D. 1983 Coordinates  
 (1996 Adjustment)

| County Project Coordinates |                    |
|----------------------------|--------------------|
| Northing                   | <u>190860.7229</u> |
| Easting                    | <u>479356.7043</u> |
| Date                       | <u>8/07/00</u>     |

I hereby certify that this United States public land survey monument record is correct and complete to the best of my knowledge and belief.

*Larry D. Hoium* Date 4/14/11

Larry D. Hoium, Anoka County Surveyor

Minnesota License Number 18165

# HISTORY OF GOVERNMENT CORNER

Page No. 24

County of Anoka

State of Minnesota

## Southwest Corner of Sec. 4 Township 32 Range 24

### **CORNER HISTORY:**

DATE UNKNOWN - Anoka County Highway Department found 6" X 6" granite monument in centerline of Round Lake Road and 3'± south of power line with an iron pipe on top of granite. Established ties to monument.

July 7, 1960 - Replaced iron pipe with a cast iron monument down 4"± . Updated ties.

August 22, 1964 - Found cast iron monument and updated ties.

July 8, 1968 - Found cast iron monument and updated ties.

June 14, 1972 - Found cast iron monument and updated ties.

May 26, 1976 - Found cast iron monument and updated ties.

May 30, 1979 - Found cast iron monument and updated ties.

September 3, 1982 - Found cast iron monument and updated ties.

May 29, 1985 - Found cast iron monument and updated ties.

August 10, 1988 - Found cast iron monument and updated ties.

July 15, 1993 - Found cast iron monument and updated ties.

August 7, 2000 - Found cast iron monument and established NAD 1983 ( 1996 Adjustment) Anoka County Project Coordinates by Static GPS methods. Updated ties.

July 19, 2001 - Set construction ties and removed cast iron monument prior to road construction.

February 11, 2011 - Found cast iron monument and updated ties.