

CERTIFICATE OF LOCATION OF GOVERNMENT CORNER

County of Anoka

State of Minnesota

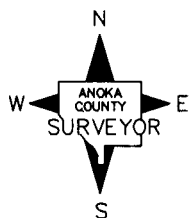
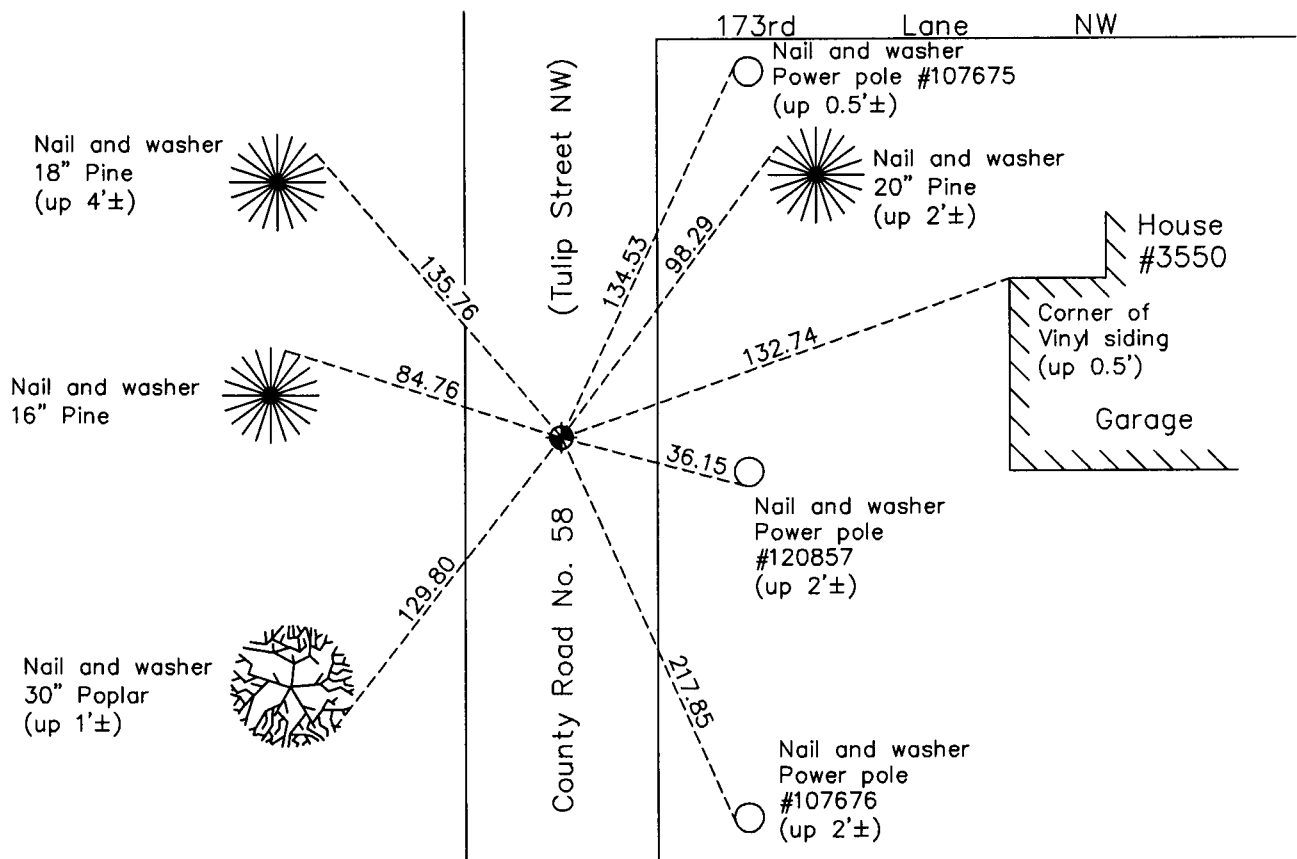
South 1/4 Corner of Sec. 5 Township 32 Range 24

On the 9th day of July, 1968, the described corner was evidenced by a 1/2" iron pipe

and to perpetuate the location of said corner, at the exact location thereof, a permanent marker was placed consisting of a cast iron monument

AND on the 21st day of December, 2010, said permanent marker was found down 0.2'± and the ties were updated

Updated reference ties are as shown below.



Revision Date
4/14/11

N.A.D. 1983 Coordinates
(1996 Adjustment)

County Project Coordinates	
Northing	190908.1924
Easting	476712.4436
Date	10/03/00

I hereby certify that this United States public land survey monument record is correct and complete to the best of my knowledge and belief.

Larry D. Hoium Date 4/14/11

Larry D. Hoium, Anoka County Surveyor

Minnesota License Number 18165

HISTORY OF GOVERNMENT CORNER

County of Anoka

State of Minnesota

South 1/4 Corner of Sec. 5 Township 32 Range 24

CORNER HISTORY:

May 1960 - Dug for but could not find granite monument shown on Anoka County Highway Department notes.

July 9, 1968 - Found 1/2" iron pipe set by N.C. Hoium. Replaced iron pipe with cast iron monument and set P.K. nails 2.00' north and east of monument. Established ties to monument.

June 19, 1972 - Found cast iron monument and updated ties.

May 26, 1976 - Found cast iron monument and updated ties.

May 31, 1979 - Found cast iron monument and updated ties.

June 21, 1982 - Found cast iron monument and updated ties.

June 4, 1985 - Found cast iron monument and updated ties.

August 12, 1988 - Found cast iron monument and updated ties.

July 14, 1993 - Found cast iron monument and updated ties.

October 3, 2000 - Found cast iron monument and established NAD 1983 (1996 Adjustment) Anoka County Project Coordinates by Static GPS methods. Updated ties.

December 21, 2010 - Found cast iron monument down 0.2'± and updated ties.