

CERTIFICATE OF LOCATION OF GOVERNMENT CORNER

County of Anoka

State of Minnesota

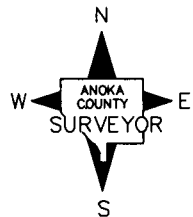
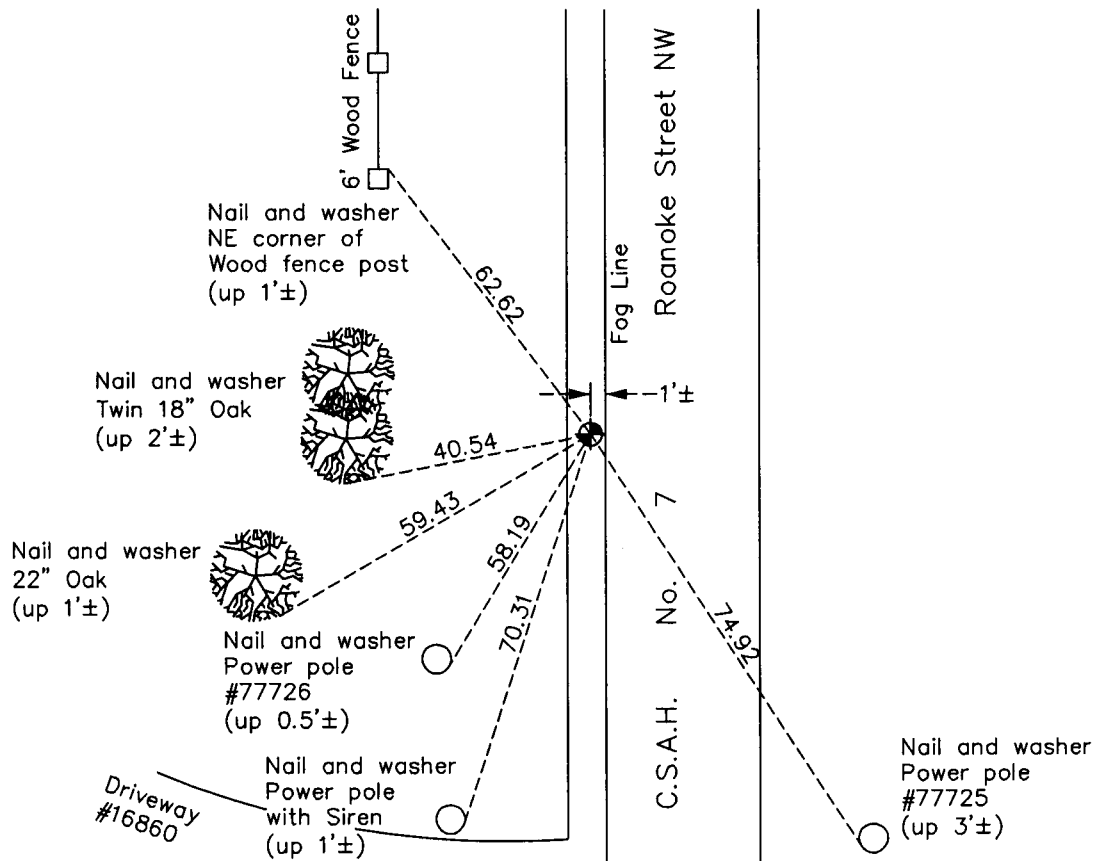
West 1/4 Corner of Sec. 7 Township 32 Range 24

On the 13th day of December, 1965, the described corner was evidenced by area resurvey

and to perpetuate the location of said corner, at the exact location thereof, a permanent marker was placed consisting of a cast iron monument

AND on the 12th day of January, 2011, said permanent marker was found flush with the surface and the ties were updated

Updated reference ties are as shown below.



Revision Date

4/18/11

N.A.D. 1983 Coordinates
(1996 Adjustment)

County Project Coordinates	
Northing	188279.5998
Easting	468623.0944
Date	9/07/99

I hereby certify that this United States public land survey monument record is correct and complete to the best of my knowledge and belief.

Larry D. Hoium Date 4/18/11

Larry D. Hoium, Anoka County Surveyor

Minnesota License Number 18165

HISTORY OF GOVERNMENT CORNER

County of Anoka

State of Minnesota

West 1/4 Corner of Sec. 7 Township 32 Range 24

CORNER HISTORY:

December 13, 1965 - Set P.K. nail using area resurvey and set P.K. nails 2.00' north and east. Established ties to monument.

May 27, 1966 - Replaced P.K. nail with a cast iron monument and updated ties.

July 8, 1968 - Found cast iron monument and updated ties.

June 29, 1972 - Found cast iron monument and updated ties.

May 26, 1976 - Found cast iron monument and updated ties.

September 28, 1978 - Set cast iron monument after road construction. Also set P.K. nails 2.00' north and east of monument. Updated ties.

May 31, 1979 - Found cast iron monument and updated ties.

June 21, 1982 - Found cast iron monument and updated ties.

July 28, 1988 - Found cast iron monument and updated ties.

August 30, 1990 - Found cast iron monument and updated ties.

July 15, 1993 - Found cast iron monument and updated ties.

September 7, 1999 - Found cast iron monument and established NAD 1983 (1996 Adjustment) Anoka County Project Coordinates by Static GPS methods. Updated ties.

January 12, 2011 - Found cast iron monument flush with the surface and updated ties.

HISTORY OF GOVERNMENT CORNER

Page No. 29

County of Anoka

State of Minnesota

West 1/4 Corner of Sec. 7 Township 32 Range 24

CORNER HISTORY:

December 13, 1965 - Set P.K. nail using area resurvey and set P.K. nails 2.00' north and east. Established ties to monument.

May 27, 1966 - Replaced P.K. nail with a cast iron monument and updated ties.

July 8, 1968 - Found cast iron monument and updated ties.

June 29, 1972 - Found cast iron monument and updated ties.

May 26, 1976 - Found cast iron monument and updated ties.

September 28, 1978 - Set cast iron monument after road construction. Also set P.K. nails 2.00' north and east of monument. Updated ties.

May 31, 1979 - Found cast iron monument and updated ties.

June 21, 1982 - Found cast iron monument and updated ties.

July 28, 1988 - Found cast iron monument and updated ties.

August 30, 1990 - Found cast iron monument and updated ties.

July 15, 1993 - Found cast iron monument and updated ties.

September 7, 1999 - Found cast iron monument and established NAD 1983 (1996 Adjustment) Anoka County Project Coordinates by Static GPS methods. Updated ties.

January 12, 2011 - Found cast iron monument flush with the surface and updated ties.