

# CERTIFICATE OF LOCATION OF GOVERNMENT CORNER

County of Anoka

State of Minnesota

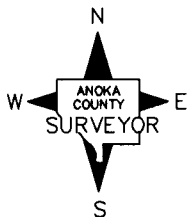
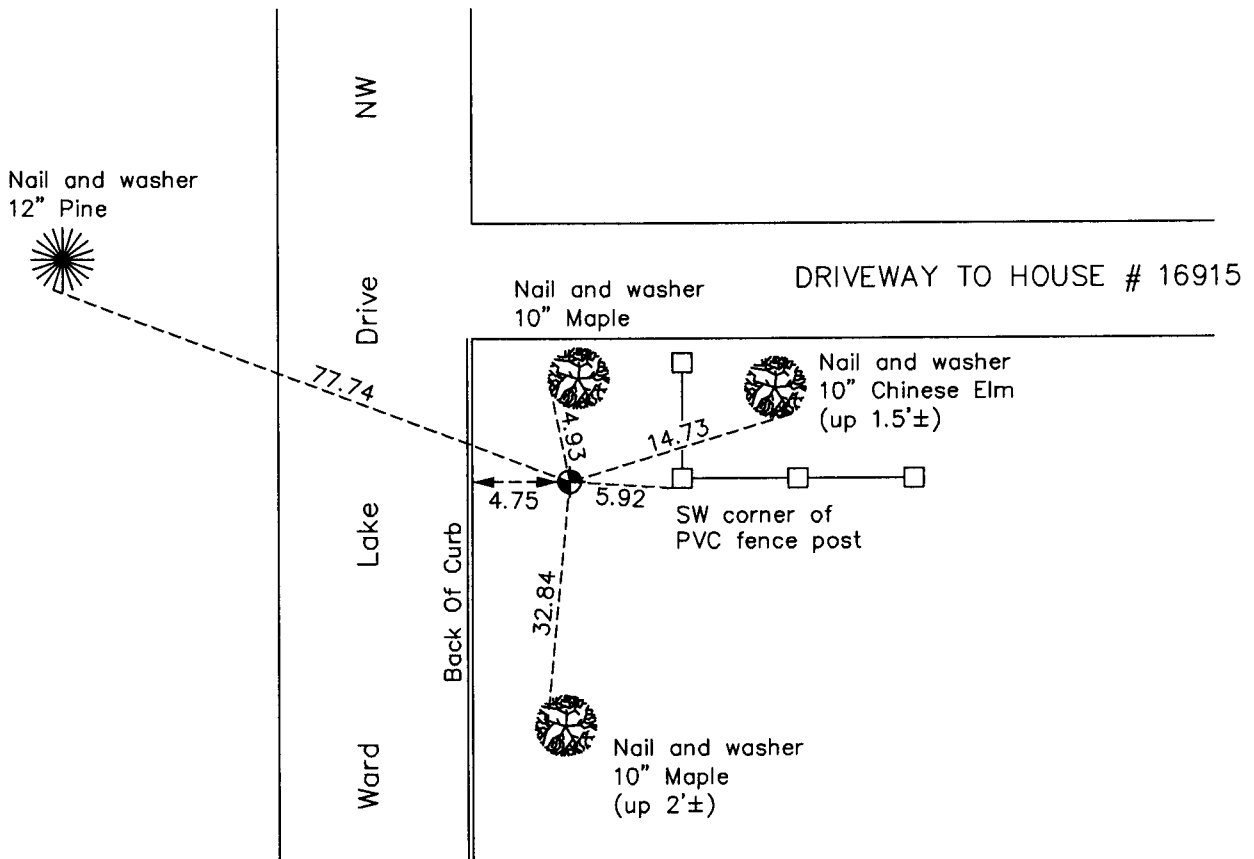
## East 1/4 Corner of Sec. 11 Township 32 Range 24

On the 30th day of August, 1962, the described corner was evidenced by area resurvey

and to perpetuate the location of said corner, at the exact location thereof, a permanent marker was placed consisting of a cast iron monument down 0.5'±

AND on the 13th day of October, 2010, said permanent marker was found and the ties were updated

Updated reference ties are as shown below.



Revision Date  
4/19/11

N.A.D. 1983 Coordinates  
(1996 Adjustment)

| County Project Coordinates |             |
|----------------------------|-------------|
| Northing                   | 188013.1576 |
| Easting                    | 495156.1281 |
| Date                       | 10/23/00    |

I hereby certify that this United States public land survey monument record is correct and complete to the best of my knowledge and belief.

*Larry D. Hoium* Date 4/19/11

Larry D. Hoium, Anoka County Surveyor

Minnesota License Number 18165

# HISTORY OF GOVERNMENT CORNER

Page No. 35

County of Anoka

State of Minnesota

## East 1/4 Corner of Sec. 11 Township 32 Range 24

### **CORNER HISTORY:**

August 30, 1962 - Set cast iron monument up 0.2'± using area resurvey and established ties to monument.

August 14, 1964 - Found cast iron monument and updated ties.

July 11, 1968 - Found cast iron monument and updated ties.

June 23, 1972 - Found cast iron monument and updated ties.

May 27, 1976 - Found cast iron monument and updated ties.

May 24, 1978 - Lowered cast iron monument to 0.5'± below surface and updated ties.

May 31, 1979 - Found cast iron monument and updated ties.

June 17, 1982 - Found cast iron monument and updated ties.

August 15, 1988 - Found cast iron monument and updated ties.

July 11, 1989 - Replaced cast iron monument with a 1/2" iron pipe with "Anoka County Surveyor" cap and updated ties.

August 21, 1989 - Replaced 1/2" iron pipe with "Anoka County Surveyor" cap with a cast iron monument set down 0.5'± and updated ties.

July 21, 1993 - Found cast iron monument and updated ties.

January 6, 1998 - Found cast iron monument and updated ties.

October 23, 2000 - Found cast iron monument and established NAD 1983 (1996 Adjustment) Anoka County Project Coordinates by Static GPS methods. Updated ties.

October 13, 2010 - Found cast iron monument down 0.5'± and updated ties.