

# CERTIFICATE OF LOCATION OF GOVERNMENT CORNER

County of Anoka

State of Minnesota

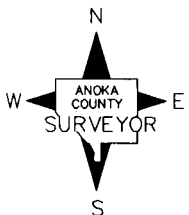
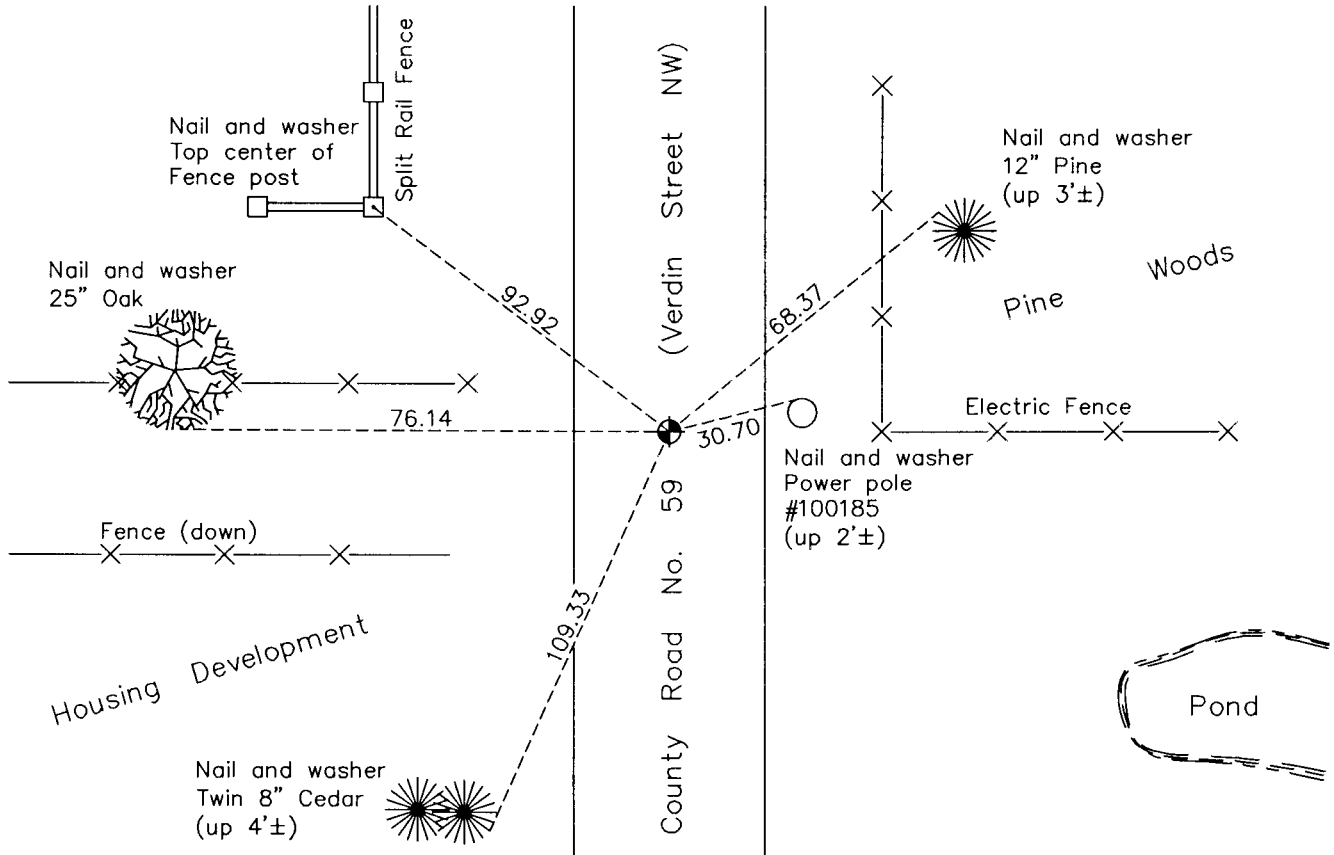
## Northwest Corner of Sec. 15 Township 32 Range 24

On the 28th day of January, 1964, the described corner was evidenced by area resurvey

and to perpetuate the location of said corner, at the exact location thereof, a permanent marker was placed consisting of a cast iron monument

AND on the 17th day of August, 2012, said permanent marker was raised to the surface after overlay of road was completed

Updated reference ties are as shown below.



N.A.D. 1983 Coordinates  
(1996 Adjustment)

**County Project Coordinates**

Northing	185634.1085
Easting	484670.4536
Date	7/13/00

Revision Date  
12/17/12

I hereby certify that this United States public land survey monument record is correct and complete to the best of my knowledge and belief.

*Larry D. Hoium* Date 12/17/12  
 Larry D. Hoium, Anoka County Surveyor  
 Minnesota License Number 18165

# HISTORY OF GOVERNMENT CORNER

Page No. 43

County of Anoka

State of Minnesota

## Northwest Corner of Sec. 15 Township 32 Range 24

### **CORNER HISTORY:**

January 28, 1964 - Set P.K. nail and established ties to monument.

July 31, 1964 - Replaced P.K. nail with a cast iron monument. Updated ties.

July 10, 1968 - Found cast iron monument and updated ties.

June 22, 1972 - Found cast iron monument and updated ties.

May 28, 1976 - Found cast iron monument and updated ties.

June 1, 1979 - Found cast iron monument and updated ties.

May 30, 1981 - Found cast iron monument and updated ties.

June 23, 1982 - Found cast iron monument and updated ties.

July 27, 1988 - Found cast iron monument and updated ties.

July 21, 1993 - Found cast iron monument and updated ties.

May 12, 1997 - Added spacer/s and replaced top of cast iron monument. Monument is flush with surface. Updated ties.

July 13, 2000 - Found cast iron monument and established NAD 1983 ( 1996 Adjustment) Anoka County Project Coordinates by Static GPS methods. Updated ties.

October 19, 2010 - Found cast iron monument flush with the surface and updated ties.

July 12, 2012 - Found cast iron monument broken.

July 21, 1993 - Verified location of broken cast iron monument by Static GPS methods.

July 16, 2012 - Replaced broken cast iron monument with a new cast iron monument.

August 17, 2012 - Added spacer/s and replaced top of cast iron monument after road overlay. Monument is flush with surface.