

CERTIFICATE OF LOCATION OF GOVERNMENT CORNER

County of Anoka

State of Minnesota

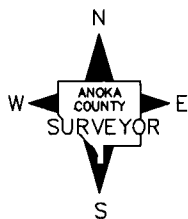
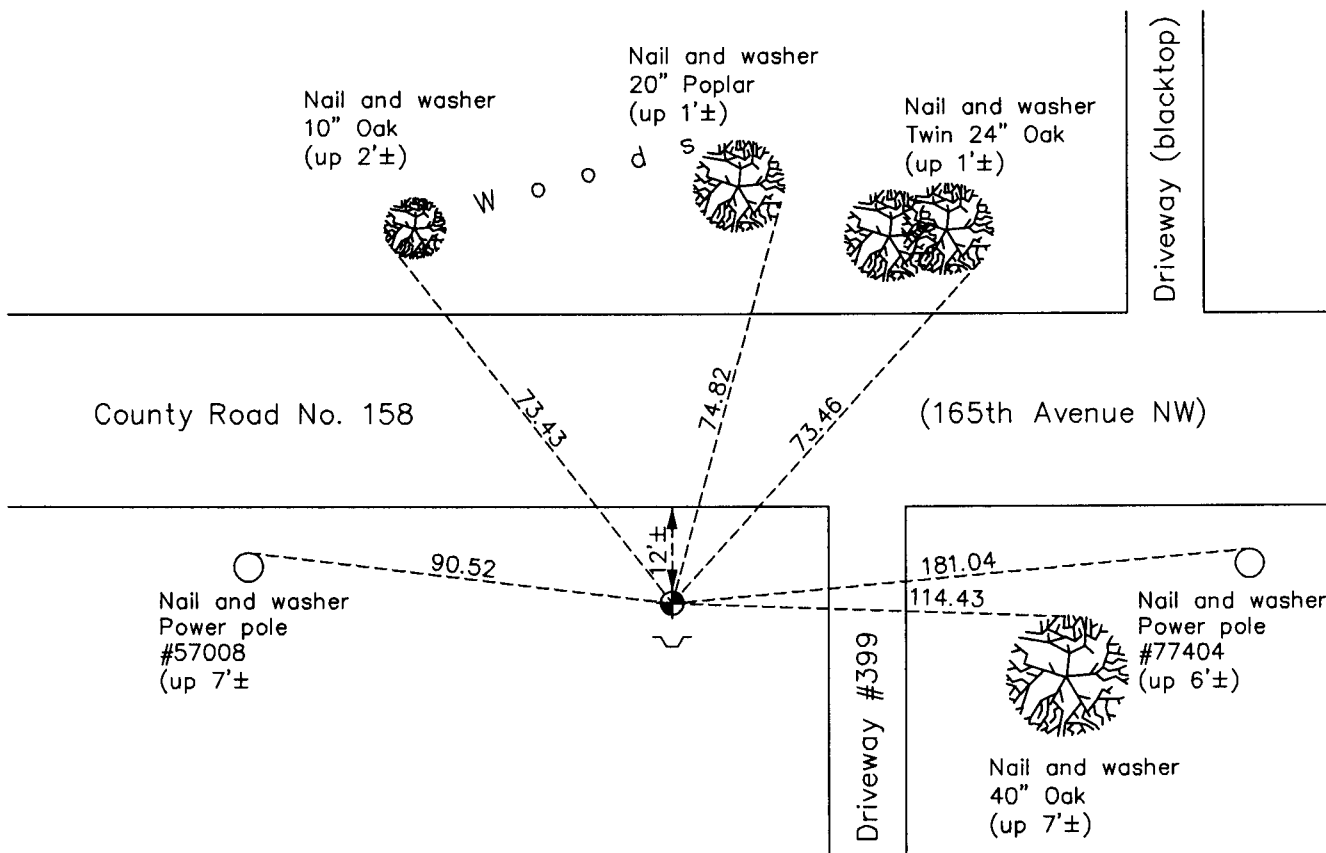
Northeast Corner of Sec. 18 Township 32 Range 24

On the 2nd day of November, 1961, the described corner was evidenced by area resurvey

and to perpetuate the location of said corner, at the exact location thereof, a permanent marker was placed consisting of a cast iron monument with a sign and post on the south side

AND on the 27th day of October, 2010, said permanent marker was found down 0.6'± in the bottom of a ditch and the ties were updated

Updated reference ties are as shown below.



Revision Date
4/26/11

N.A.D. 1983 Coordinates
(1996 Adjustment)

County Project Coordinates	
Northing	<u>185673.2223</u>
Easting	<u>474171.3475</u>
Date	<u>10/04/00</u>

I hereby certify that this United States public land survey monument record is correct and complete to the best of my knowledge and belief.

Larry D. Hoium Date 4/26/11

_____, Anoka County Surveyor
Minnesota License Number 18165

HISTORY OF GOVERNMENT CORNER

Page No. 46

County of Anoka

State of Minnesota

Northeast Corner of Sec. 18 Township 32 Range 24

CORNER HISTORY:

November 2, 1961 - Set cast iron monument up 0.3'± in road ditch using bearing tree and established ties to monument.

August 25, 1964 - Found cast iron monument and updated ties.

July 8, 1968 - Found cast iron monument and updated ties.

May 5, 1971 - Set additional ties and removed and replaced cast iron monument with an iron pipe set flush with the surface prior to road construction.

July 19, 1972 - Set cast iron monument flush with the surface after road construction using ties. Updated ties.

June 1, 1976 - Found cast iron monument and updated ties.

June 4, 1979 - Found cast iron monument and updated ties.

June 21, 1982 - Found cast iron monument and updated ties.

June 5, 1985 - Found cast iron monument and updated ties.

July 28, 1988 - Found cast iron monument with sign and post on south side (date set unknown) and updated ties.

July 15, 1993 - Found cast iron monument and updated ties.

October 4, 2000 - Found cast iron monument and established NAD 1983 (1996 Adjustment) Anoka County Project Coordinates by Static GPS methods. Updated ties.

October 27, 2010 - Found cast iron monument down 0.6'± in bottom of ditch and updated ties.