

CERTIFICATE OF LOCATION OF GOVERNMENT CORNER

County of Anoka

State of Minnesota

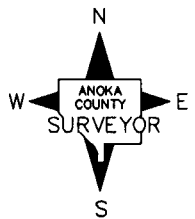
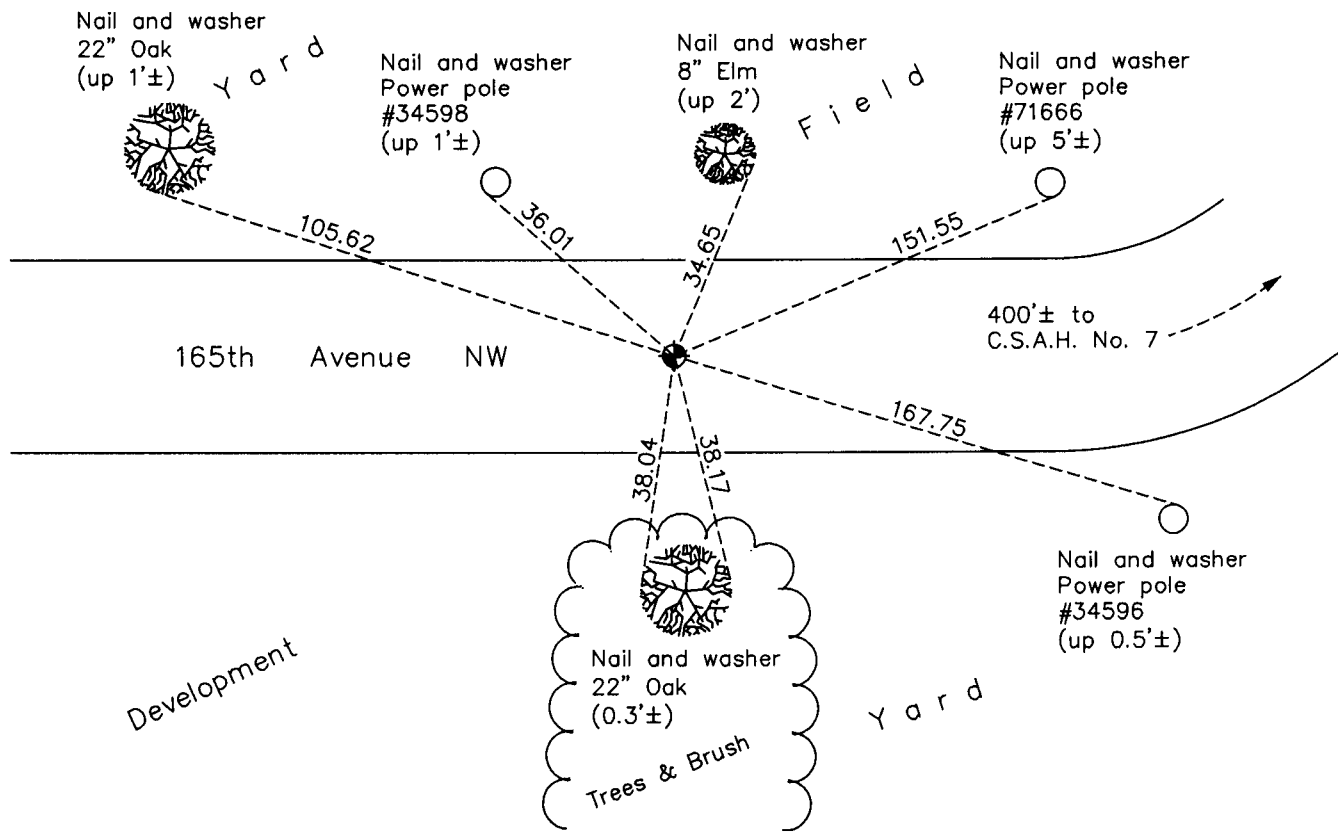
Southwest Corner of Sec. 7 Township 32 Range 24

On the 30th day of July, 1968, the described corner was evidenced by a granite monument

and to perpetuate the location of said corner, at the exact location thereof, a permanent marker was placed consisting of a cast iron monument

AND on the 3rd day of November, 2010, said permanent marker was found flush with the surface and the ties were updated

Updated reference ties are as shown below.



Revision Date
4/26/11

N.A.D. 1983 Coordinates
(1996 Adjustment)

| County Project Coordinates | |
|----------------------------|--------------------|
| Northing | <u>185651.4321</u> |
| Easting | <u>468615.1127</u> |
| Date | <u>9/07/99</u> |

I hereby certify that this United States public land survey monument record is correct and complete to the best of my knowledge and belief.

Larry D. Hoium Date 4/26/11

Larry D. Hoium, Anoka County Surveyor

Minnesota License Number 18165

HISTORY OF GOVERNMENT CORNER

Page No. 48

County of Anoka

State of Minnesota

Southwest Corner of Sec. 7 Township 32 Range 24

CORNER HISTORY:

May 15, 1959 - Found granite monument that Minnesota Highway Department had found. MNDOT painted a yellow circle on top and was found to have a cross on top. Mrs. Russell, who has a tract of land in the SE corner of Section 12, Ramsey County, reported that former County Commissioner Stack said that this rock had been used since 1870. Established ties to monument.

May 17, 1968 - Found granite rock and established additional ties prior to road construction. Granite rock is to be removed.

July 30, 1968 - Replaced granite rock with a cast iron monument set down $0.6' \pm$ after road construction and updated ties.

June 29, 1972 - Found cast iron monument and updated ties.

June 1, 1976 - Found cast iron monument and updated ties.

June 4, 1979 - Found cast iron monument and updated ties.

June 21, 1982 - Found cast iron monument and updated ties.

May 29, 1985 - Found cast iron monument and updated ties.

July 28, 1988 - Found cast iron monument and updated ties.

July 15, 1993 - Found cast iron monument and updated ties.

September 7, 1999 - Found cast iron monument and established NAD 1983 (1996 Adjustment) Anoka County Project Coordinates by Static GPS methods. Updated ties.

November 3, 2010 - Found cast iron monument flush with the surface and updated ties.