

CERTIFICATE OF LOCATION OF GOVERNMENT CORNER

County of Anoka

State of Minnesota

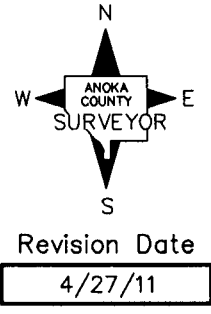
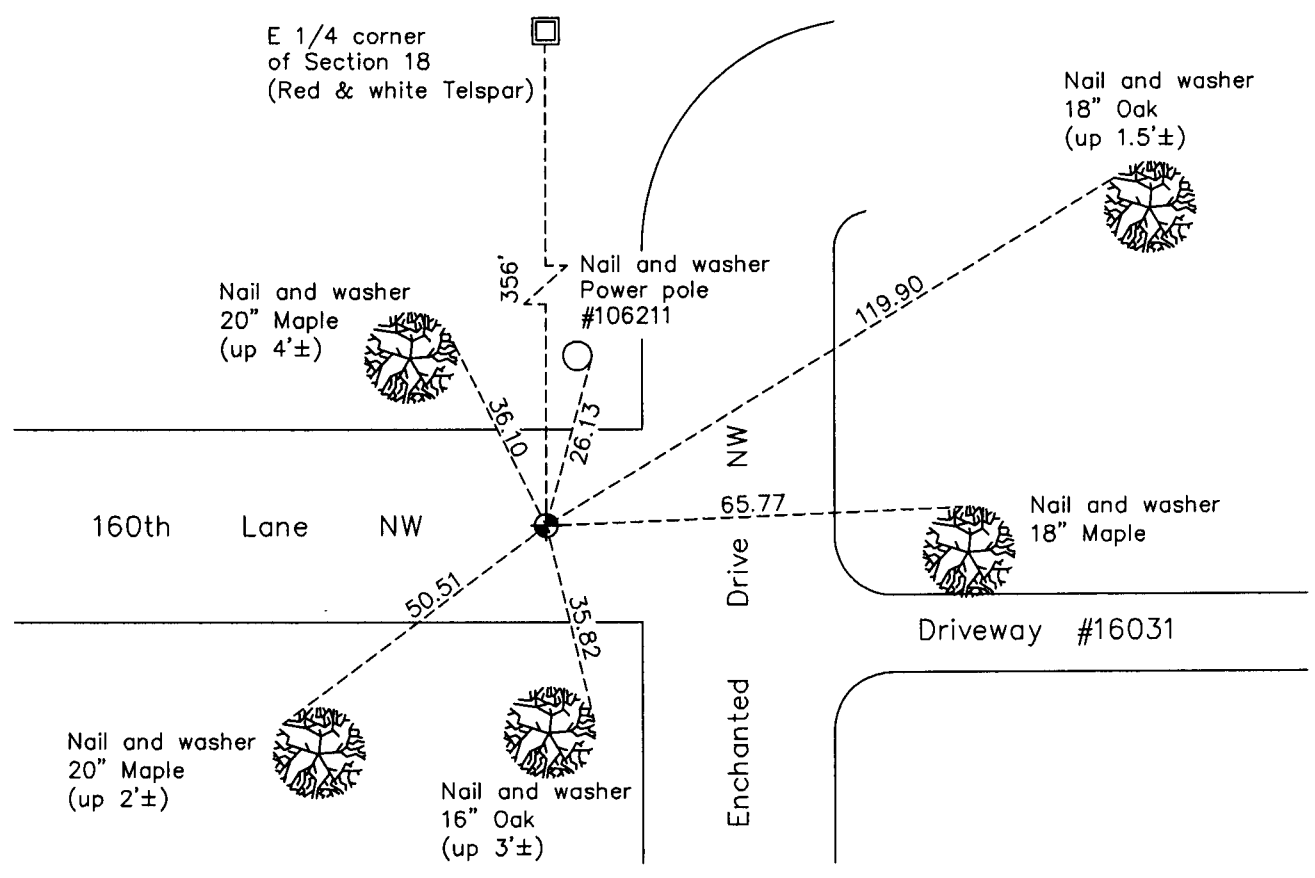
Witness Corner of Sec. 18 Township 32 Range 24
(on east line of SE 1/4)

On the 7th day of November, 2001, the described corner was evidenced by area resurvey
and GPS

and to perpetuate the location of said corner, at the exact location thereof, a permanent marker
was placed consisting of a cast iron monument

AND on the 3rd day of November, 2010, said permanent marker was found flush with the
surface and the ties were updated

Updated reference ties are as shown below.



N.A.D. 1983 Coordinates (1996 Adjustment)

County Project Coordinates	
Northing	<u>182676.2673</u>
Easting	<u>474142.0058</u>
Date	<u>11/07/01</u>

I hereby certify that this United States public land survey monument record is correct and complete to the best of my knowledge and belief.

Larry D. Hoium Date 4/27/11

Larry D. Hoium, Anoka County Surveyor
Minnesota License Number 18165

HISTORY OF GOVERNMENT CORNER

County of Anoka

State of Minnesota

Witness Corner of Sec. 18 Township 32 Range 24
(on east line of SE 1/4)

CORNER HISTORY:

November 7, 2001 - Set cast iron monument using area resurvey and established NAD 1983 (1996 Adjustment) Anoka County Project Coordinates by Static GPS methods. Also established ties to monument.

November 3, 2010 - Found cast iron monument flush with the surface and updated ties.