

CERTIFICATE OF LOCATION OF GOVERNMENT CORNER

County of Anoka

State of Minnesota

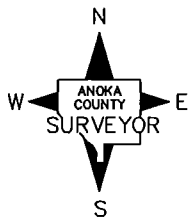
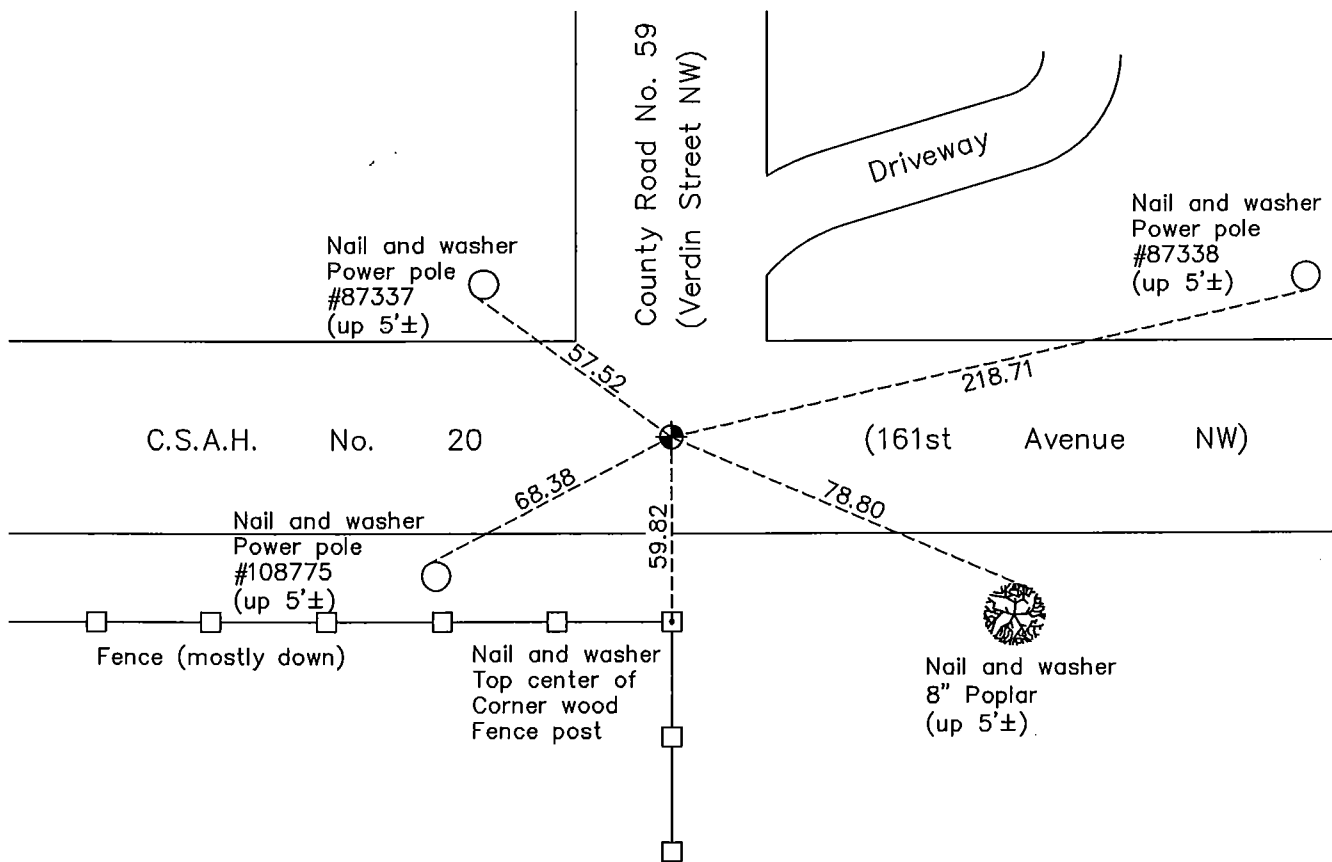
West 1/4 Corner of Sec. 15 Township 32 Range 24

On the 28th day of January, 1964, the described corner was evidenced by area resurvey

and to perpetuate the location of said corner, at the exact location thereof, a permanent marker was placed consisting of a cast iron monument

AND on the 26th day of March, 2012, said permanent marker was replaced with a new cast iron monument and the ties were updated.

Updated reference ties are as shown below.



Revision Date
3/30/12

N.A.D. 1983 Coordinates
(1996 Adjustment)

| County Project Coordinates | |
|----------------------------|-------------|
| Northing | 183005.7747 |
| Easting | 484674.4542 |
| Date | 7/13/00 |

I hereby certify that this United States public land survey monument record is correct and complete to the best of my knowledge and belief.

Larry D. Hoium Date 3/30/12

Larry D. Hoium, Anoka County Surveyor

Minnesota License Number 18165

HISTORY OF GOVERNMENT CORNER

County of Anoka

State of Minnesota

West 1/4 Corner of Sec. 15 Township 32 Range 24

CORNER HISTORY:

January 28, 1964 - Set P.K. nail using area resurvey and established ties to monument.

July 31, 1964 - Replaced P.K. nail with a cast iron monument and updated ties.

July 10, 1968 - Found cast iron monument and updated ties.

June 22, 1972 - Found cast iron monument and updated ties.

June 1, 1976 - Found cast iron monument and updated ties.

June 4, 1979 - Found cast iron monument and updated ties.

June 23, 1982 - Found cast iron monument and updated ties.

June 17, 1985 - Set construction ties prior to road construction. Date reset after construction is unknown.

July 27, 1988 - Found cast iron monument and updated ties.

July 15, 1993 - Found cast iron monument and updated ties.

July 13, 2000 - Found cast iron monument and established NAD 1983 (1996 Adjustment) Anoka County Project Coordinates by Static GPS methods. Updated ties.

October 25, 2010 - Found cast iron monument flush with the surface and updated ties.

March 26, 2012 - Replaced cast iron monument with a new cast iron monument and updated ties.