

# CERTIFICATE OF LOCATION OF GOVERNMENT CORNER

County of Anoka

State of Minnesota

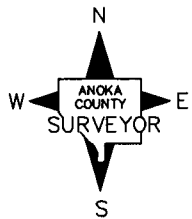
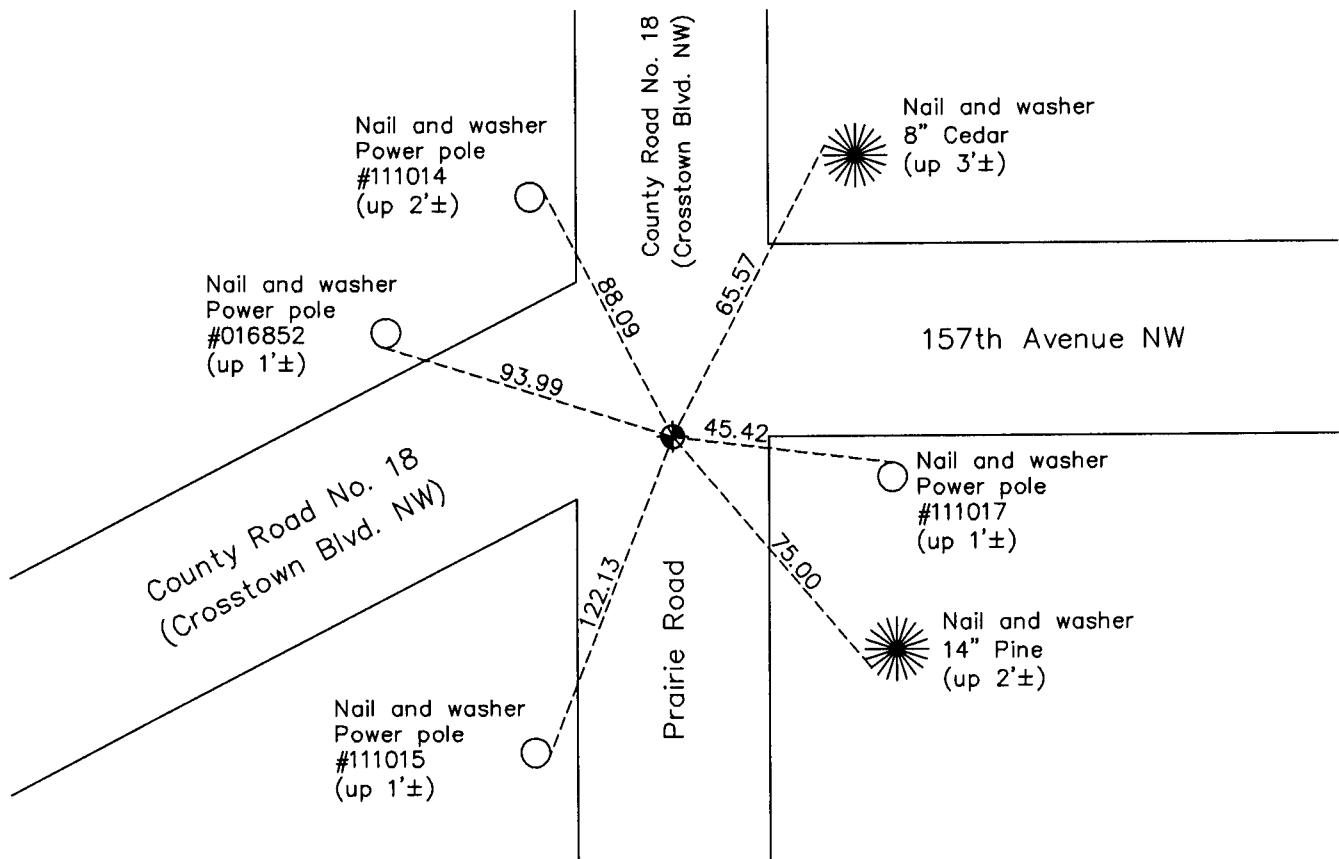
## Southwest Corner of Sec. 13 Township 32 Range 24

On the 1st day of August, 1960, the described corner was evidenced by an iron pipe  
set by N.C. Hoium

and to perpetuate the location of said corner, at the exact location thereof, a permanent marker  
 was placed consisting of a cast iron monument

AND on the 27th day of January, 2011, said permanent marker was found and the ties  
were updated

Updated reference ties are as shown below.



Revision Date  
4/29/11

N.A.D. 1983 Coordinates  
 (1996 Adjustment)

County Project Coordinates	
Northing	180107.4416
Easting	495135.4782
Date	10/02/00

I hereby certify that this United States public land survey monument record is correct and complete to the best of my knowledge and belief.

*Larry D. Hoium* Date 4/29/11

Larry D. Hoium, Anoka County Surveyor

Minnesota License Number 18165

# HISTORY OF GOVERNMENT CORNER

County of Anoka

State of Minnesota

## Southwest Corner of Sec. 13 Township 32 Range 24

### **CORNER HISTORY:**

August 1, 1960 - Found iron pipe set by N.C. Hoium down 0.8'. Established ties to monument.

August 17, 1964 - Found iron pipe and updated ties.

July 12, 1968 - Replaced iron pipe with a cast iron monument. Updated ties.

June 22, 1972 - Found cast iron monument and updated ties.

June 2, 1976 - Found cast iron monument and updated ties.

June 28, 1978 - Replaced solid cast iron monument with an extendable cast iron monument set flush with the surface. Updated ties.

June 4, 1979 - Found cast iron monument and updated ties.

June 24, 1982 - Found cast iron monument and updated ties.

June 3, 1985 - Found cast iron monument and updated ties.

August 2, 1988 - Found cast iron monument and updated ties.

July 22, 1993 - Found cast iron monument and updated ties.

October 2, 2000 - Found cast iron monument and established NAD 1983 ( 1996 Adjustment) Anoka County Project Coordinates by Static GPS methods. Updated ties.

June 27, 2006 - Set construction ties and removed cast iron monument prior to road construction. Date reset unknown. Updated ties.

January 27, 2011 - Found cast iron monument and updated ties.