

# CERTIFICATE OF LOCATION OF GOVERNMENT CORNER

County of Anoka

State of Minnesota

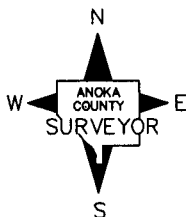
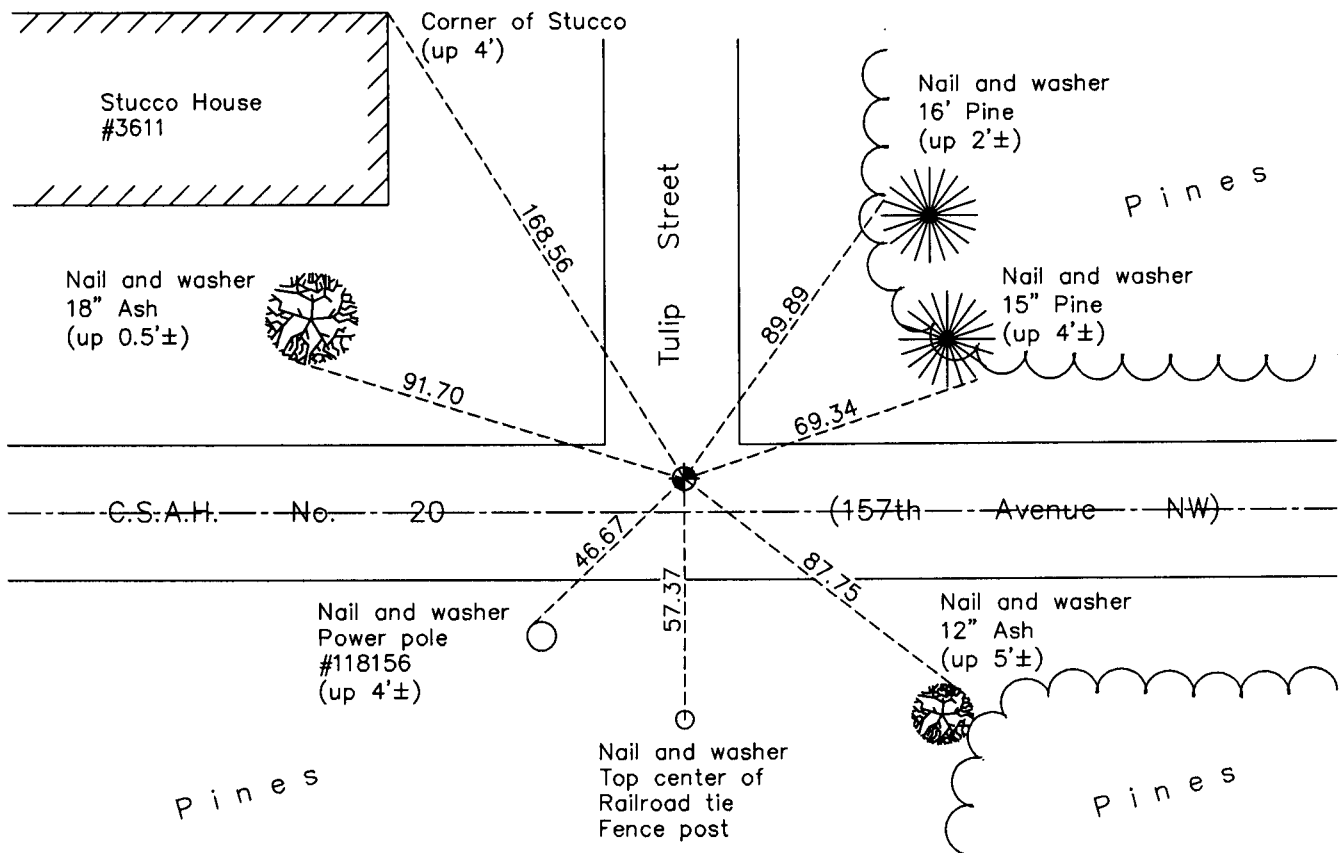
## North 1/4 Corner of Sec. 20 Township 32 Range 24

On the 1st day of July, 1963, the described corner was evidenced by area resurvey

and to perpetuate the location of said corner, at the exact location thereof, a permanent marker was placed consisting of a cast iron monument

AND on the 7th day of December, 2010, said permanent marker was found flush with the surface and the ties were updated

Updated reference ties are as shown below.



Revision Date

5/03/11

N.A.D. 1983 Coordinates  
(1996 Adjustment)

County Project Coordinates	
Northing	180345.4278
Easting	476757.0316
Date	10/09/00

I hereby certify that this United States public land survey monument record is correct and complete to the best of my knowledge and belief.

*Larry D. Hoium* Date 5/03/11

Larry D. Hoium, Anoka County Surveyor  
Minnesota License Number 18165

# HISTORY OF GOVERNMENT CORNER

County of Anoka

State of Minnesota

## North 1/4 Corner of Sec. 20 Township 32 Range 24

### **CORNER HISTORY:**

July 1, 1963 - Set cast iron monument using area resurvey and established ties to monument.

August 25, 1964 - Found cast iron monument and updated ties.

July 10, 1968 - Found cast iron monument and updated ties.

June 28, 1972 - Found cast iron monument and updated ties. Set P.K. nails 2.00' north and east of monument.

June 2, 1976 - Found cast iron monument and updated ties.

July 27, 1978 - Found cast iron monument and updated ties.

September 26, 1978 - Added spacer/s and replaced top of cast iron monument. Monument is flush with surface. Updated ties.

June 5, 1979 - Found cast iron monument and updated ties.

June 25, 1982 - Found cast iron monument and updated ties.

July 27, 1988 - Found cast iron monument and updated ties.

July 15, 1993 - Found cast iron monument and updated ties.

July 17, 1997 - Found cast iron monument and updated ties.

October 9, 2000 - Found cast iron monument and established NAD 1983 ( 1996 Adjustment) Anoka County Project Coordinates by Static GPS methods. Updated ties.

December 7, 2010 - Found cast iron monument flush with surface and updated ties.