

CERTIFICATE OF LOCATION OF GOVERNMENT CORNER

County of Anoka

State of Minnesota

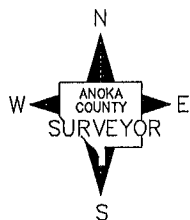
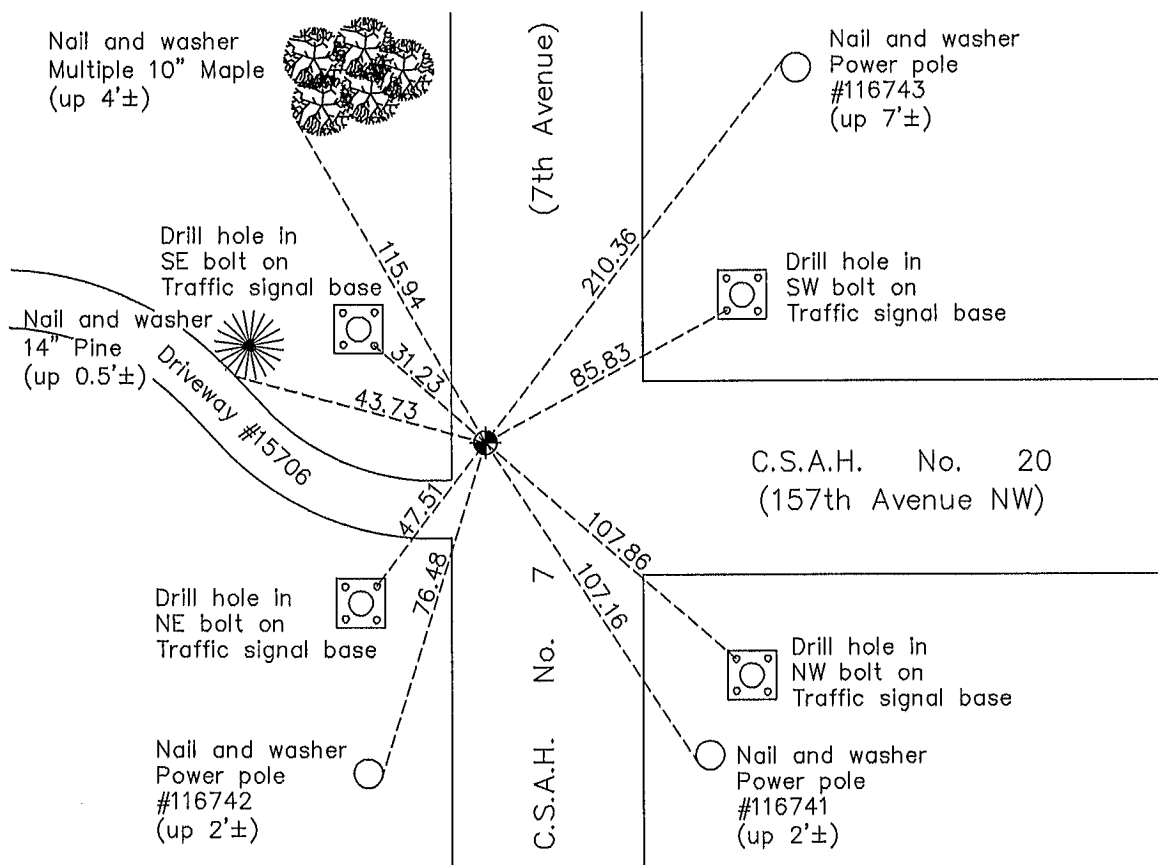
North 1/4 Corner of Sec. 19 Township 32 Range 24

On the 2nd day of July, 1963, the described corner was evidenced by area resurvey

and to perpetuate the location of said corner, at the exact location thereof, a permanent marker was placed consisting of a partial cast iron monument set in concrete

AND on the 16th day of May, 2011, said permanent marker was replaced with a new cast iron monument and the ties were updated

Updated reference ties are as shown below.



Revision Date

8/17/11

N.A.D. 1983 Coordinates
(1996 Adjustment)

County Project Coordinates	
Northing	180395.3983
Easting	471469.0496
Date	10/04/00

I hereby certify that this United States public land survey monument record is correct and complete to the best of my knowledge and belief.

Larry D. Hoium Date 8/17/11

Larry D. Hoium, Anoka County Surveyor
Minnesota License Number 18165

HISTORY OF GOVERNMENT CORNER

County of Anoka

State of Minnesota

North 1/4 Corner of Sec. 19 Township 32 Range 24

CORNER HISTORY:

July 2, 1963 - Set cast iron monument flush with the surface using area resurvey and established ties to monument.

August 25, 1964 - Found cast iron monument and updated ties.

July 10, 1968 - Found cast iron monument and updated ties.

June 28, 1972 - Found cast iron monument and updated ties.

June 2, 1976 - Found cast iron monument and updated ties.

October 2, 1978 - Replaced 1/2" iron pipe with a cast iron monument set flush with the surface and verified position using transit ties. Date transit ties and iron pipe was set is unknown. Updated ties.

June 5, 1979 - Found cast iron monument and updated ties.

June 25, 1982 - Found cast iron monument and updated ties.

May 29, 1985 - Found cast iron monument and updated ties.

July 28, 1988 - Found cast iron monument and updated ties.

July 14, 1993 - Found cast iron monument and updated ties.

October 4, 2000 - Found cast iron monument and established NAD 1983 (1996 Adjustment) Anoka County Project Coordinates by Static GPS methods. Updated ties.

May 28, 2003 - Set construction ties and removed cast iron monument prior to road construction.

November 4, 2003 - Set partial cast iron monument in concrete after road construction using construction ties. Updated ties.

November 2, 2010 - Found cast iron monument flush with the surface. Installed asphalt patch around monument and updated ties.

May 16, 2011 - Replaced partial cast iron monument with a full cast iron monument. Updated ties.