

CERTIFICATE OF LOCATION OF GOVERNMENT CORNER

County of Anoka

State of Minnesota

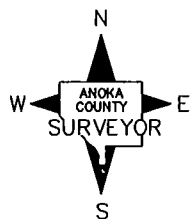
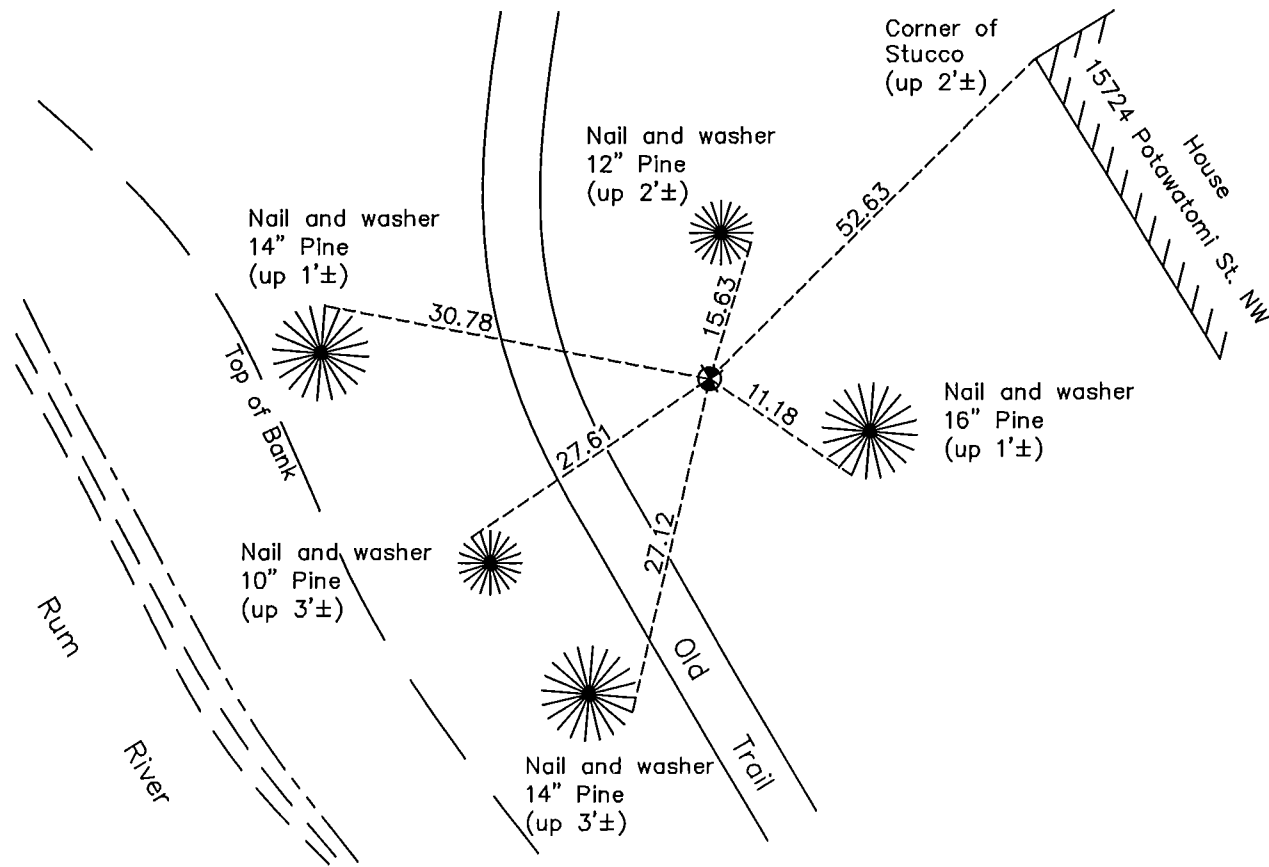
Witness Corner of Sec. 19 Township 32 Range 24
(on north line of section)

On the 2nd day of July, 1963, the described corner was evidenced by area resurvey

and to perpetuate the location of said corner, at the exact location thereof, a permanent marker was placed consisting of a cast iron monument located 1045' east of the Northwest corner of Section 19

AND on the 25th day of May, 2011, said permanent marker was broken and replaced with a new cast iron monument and the ties were updated

Updated reference ties are as shown below.



Revision Date

8/17/11

N.A.D. 1983 Coordinates
(1996 Adjustment)

County Project Coordinates	
Northing	180400.2740
Easting	469674.8450
Date	2/12/01

I hereby certify that this United States public land survey monument record is correct and complete to the best of my knowledge and belief.

Larry D. Holium Date 8/17/11

Larry D. Holium, Anoka County Surveyor

Minnesota License Number 18165

HISTORY OF GOVERNMENT CORNER

Page No. 68

County of Anoka

State of Minnesota

Witness Corner of Sec. 19 Township 32 Range 24
(on north line of section)

CORNER HISTORY:

July 2, 1963 - Set cast iron monument using area resurvey and established ties to monument.

August 26, 1964 - Found cast iron monument and updated ties.

July 10, 1968 - Found cast iron monument and updated ties.

June 28, 1972 - Found cast iron monument and updated ties.

June 2, 1976 - Found cast iron monument and updated ties.

June 5, 1979 - Found cast iron monument and updated ties.

July 6, 1982 - Found cast iron monument and updated ties.

June 12, 1985 - Found cast iron monument and updated ties.

August 8, 1988 - Found cast iron monument and updated ties.

July 27, 1993 - Found cast iron monument and updated ties.

January 3, 2011 - Found cast iron monument broken off down 0.7'± and updated ties.

February 24, 2011 - Found broken cast iron monument and verified position by Static GPS methods.

May 25, 2011 - Replaced broken cast iron monument with a new solid cast iron monument and verified position by Static GPS methods. Updated ties.