

CERTIFICATE OF LOCATION OF GOVERNMENT CORNER

County of Anoka

State of Minnesota

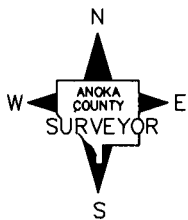
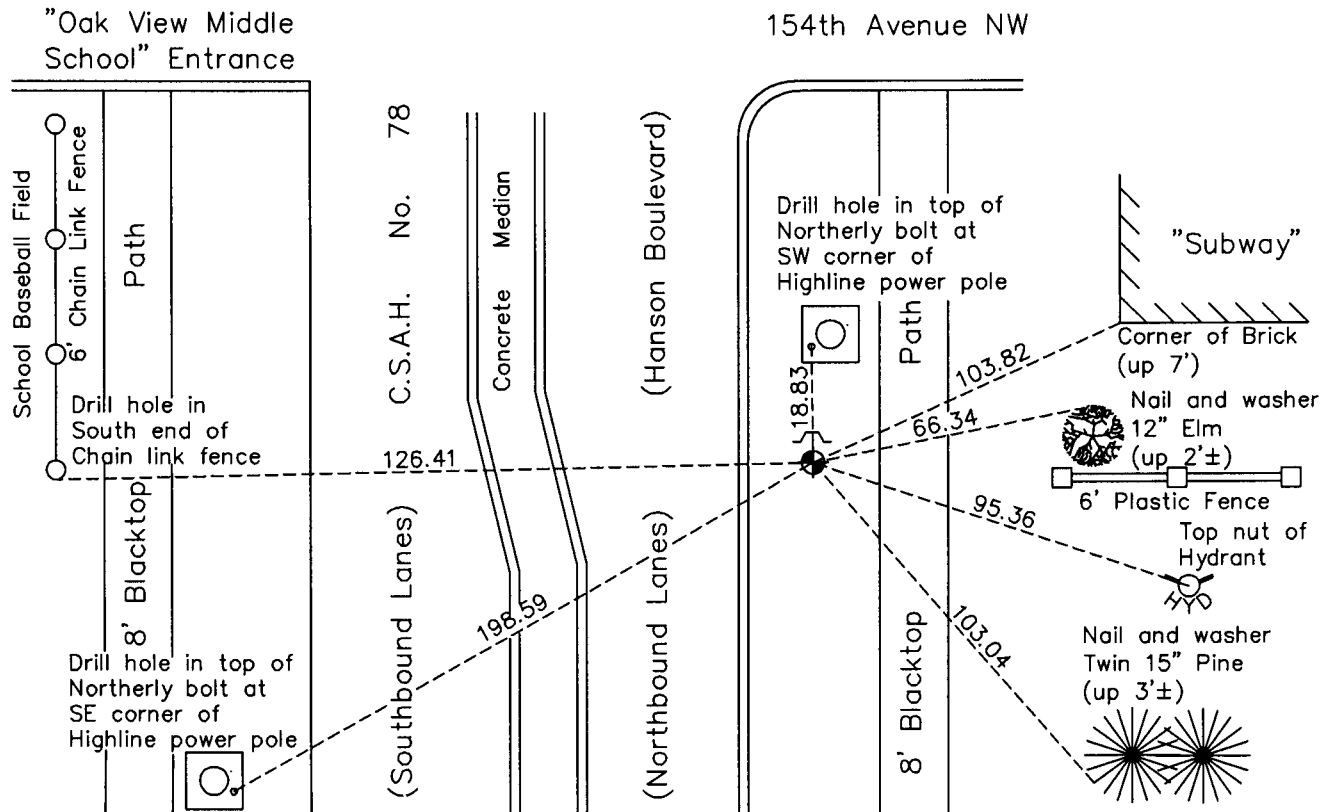
East 1/4 Corner of Sec. 22 Township 32 Range 24

On the 10th day of August, 1960, the described corner was evidenced by a spike found
using Jim Halverson ties

and to perpetuate the location of said corner, at the exact location thereof, a permanent marker
 was placed consisting of a cast iron monument with a sign and post on the north side

AND on the 5th day of October, 2010, said permanent marker was found flush with the
surface and the ties were updated

Updated reference ties are as shown below.



N.A.D. 1983 Coordinates
(1996 Adjustment)

County Project Coordinates	
Northing	177638.2545
Easting	489841.7931
Date	8/07/00

Revision Date
5/11/11

I hereby certify that this United States public land survey monument record is correct and complete to the best of my knowledge and belief.

Larry D. Hoium Date 5/11/11

Larry D. Hoium, Anoka County Surveyor

Minnesota License Number 18165

HISTORY OF GOVERNMENT CORNER

Page No. 75

County of Anoka

State of Minnesota

East 1/4 Corner of Sec. 22 Township 32 Range 24

CORNER HISTORY:

August 10, 1960 - Replaced spike, found using ties by Jim Halverson, with a cast iron monument set flush with the surface. Updated ties.

August 19, 1964 - Found cast iron monument and updated ties.

July 29, 1968 - Found cast iron monument and updated ties.

August 27, 1968 - Found cast iron monument and updated ties.

August 19, 1969 - Reset cast iron monument and updated ties.

June 30, 1972 - Found cast iron monument and updated ties.

June 3, 1976 - Found cast iron monument and updated ties.

June 6, 1979 - Found cast iron monument and updated ties.

June 22, 1982 - Found cast iron monument and updated ties.

May 30, 1985 - Found cast iron monument and updated ties.

July 27, 1988 - Found cast iron monument and updated ties.

July 19, 1993 - Found cast iron monument and updated ties.

September 29, 1998 - Replaced cast iron monument with a new cast iron monument. Updated ties.

August 7, 2000 - Found cast iron monument and established NAD 1983 (1996 Adjustment) Anoka County Project Coordinates by Static GPS methods. Updated ties.

September 19, 2005 - Set construction ties and removed cast iron monument prior to road construction.

June 26, 2006 - Set cast iron monument after road construction using construction ties. Verified location of corner by Static GPS methods. Updated ties. Set sign and post on north side of monument.

October 5, 2010 - Found cast iron monument flush with the surface and updated ties.