

# CERTIFICATE OF LOCATION OF GOVERNMENT CORNER

County of Anoka

State of Minnesota

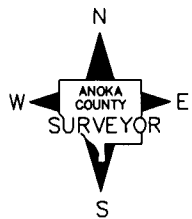
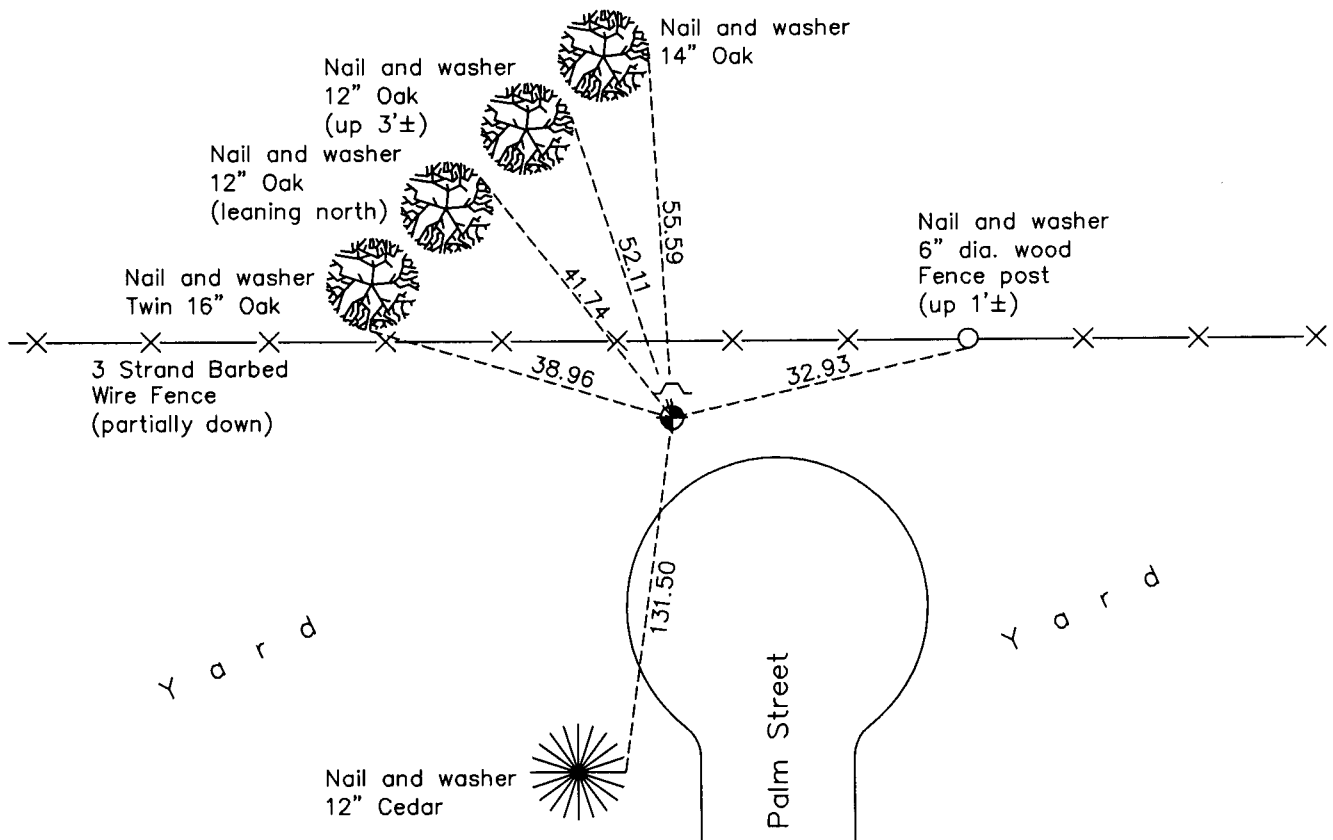
## Southwest Corner of Sec. 24 Township 32 Range 24

On the 28th day of June, 1962, the described corner was evidenced by area resurvey

and to perpetuate the location of said corner, at the exact location thereof, a permanent marker was placed consisting of a cast iron monument with a sign and post on the north side

AND on the 5th day of October, 2010, said permanent marker was found and the ties were updated

Updated reference ties are as shown below.



Revision Date

5/17/11

N.A.D. 1983 Coordinates  
(1996 Adjustment)

County Project Coordinates	
Northing	174887.1916
Easting	495130.2488
Date	10/02/00

I hereby certify that this United States public land survey monument record is correct and complete to the best of my knowledge and belief.

*Larry D. Hoium* Date 5/17/11

Larry D. Hoium, Anoka County Surveyor

Minnesota License Number 18165

# HISTORY OF GOVERNMENT CORNER

County of Anoka

State of Minnesota

## Southwest Corner of Sec. 24 Township 32 Range 24

### **CORNER HISTORY:**

June 28, 1962 - Set cast iron monument down 0.7' using area resurvey and established ties to monument.

August 20, 1964 - Found cast iron monument and updated ties.

July 29, 1968 - Found cast iron monument down 0.5'± and updated ties.

July 6, 1972 - Found cast iron monument and updated ties.

June 7, 1976 - Found cast iron monument and updated ties.

July 15, 1977 - Replaced broken cast iron monument with a new cast iron monument set down 1'±. Updated ties.

June 8, 1979 - Found cast iron monument and updated ties.

June 25, 1982 - Found cast iron monument and updated ties.

June 4, 1985 - Found cast iron monument and updated ties.

August 2, 1988 - Found cast iron monument and updated ties.

July 19, 1993 - Found cast iron monument and updated ties.

October 2, 2000 - Found cast iron monument with sign and post on north side of monument (date set unknown) and established NAD 1983 (1996 Adjustment) Anoka County Project Coordinates by Static GPS methods. Updated ties.

October 5, 2010 - Found cast iron monument and updated ties.