

CERTIFICATE OF LOCATION OF GOVERNMENT CORNER

County of Anoka

State of Minnesota

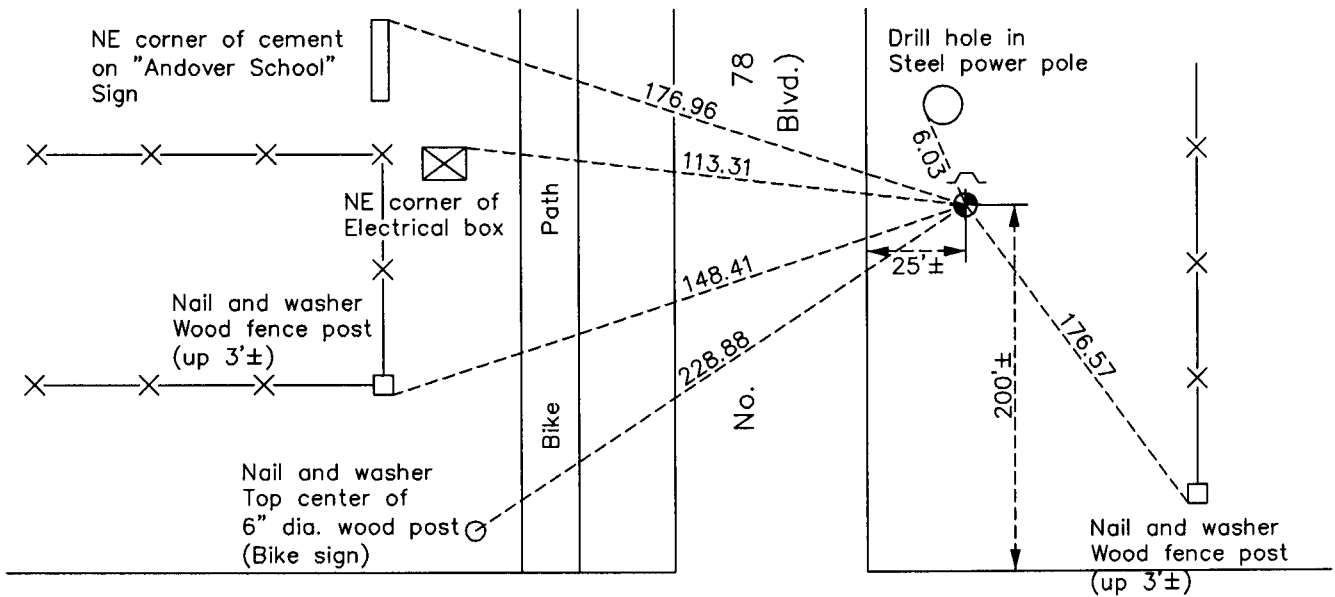
Northeast Corner of Sec. 27 Township 32 Range 24

On the 20th day of August, 1964, the described corner was evidenced by a 1" iron pipe

and to perpetuate the location of said corner, at the exact location thereof, a permanent marker was placed consisting of a cast iron monument with a sign and post on the north side

AND on the 11th day of October, 2010, said permanent marker was found up 0.1'± and the ties were updated

Updated reference ties are as shown below.

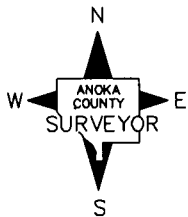


148th

Lane

NW

C.S.A.H.
(Hanson)



Revision Date

5/19/11

N.A.D. 1983 Coordinates
(1996 Adjustment)

County Project Coordinates	
Northing	175022.7449
Easting	489869.7119
Date	6/30/00

I hereby certify that this United States public land survey monument record is correct and complete to the best of my knowledge and belief.

Larry D. Hoium Date 5/19/11

Larry D. Hoium, Anoka County Surveyor

Minnesota License Number 18165

HISTORY OF GOVERNMENT CORNER

Page No. 82

County of Anoka

State of Minnesota

Northeast Corner of Sec. 27 Township 32 Range 24

CORNER HISTORY:

August 20, 1964 - Found 1" iron pipe flush with the surface using ties by Robert M. Knudsen dated November 3, 1960. Established ties to monument.

October 28, 1969 - Set construction ties prior to power line construction.

June 17, 1970 - Found 1" iron pipe and updated ties. Set steel fence post up 2'± on north side of iron pipe.

June 30, 1972 - Found 1" iron pipe and updated ties.

June 7, 1976 - Found 1" iron pipe and updated ties.

June 11, 1979 - Found 1" iron pipe and updated ties.

November 4, 1981 - Replaced 1" iron pipe with a cast iron monument after moving corner fence post. Set sign and post on south side of monument and updated ties.

June 22, 1982 - Found cast iron monument and updated ties.

July 27, 1988 - Found cast iron monument and updated ties.

July 19, 1993 - Found cast iron monument and updated ties.

June 30, 2000 - Found cast iron monument with sign and post on north side and established NAD 1983 (1996 Adjustment) Anoka County Project Coordinates by Static GPS methods. Updated ties.

October 11, 2010 - Found cast iron monument up 0.1'± with sign and post on north side and updated ties.