

CERTIFICATE OF LOCATION OF GOVERNMENT CORNER

County of Anoka

State of Minnesota

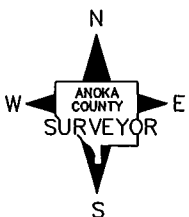
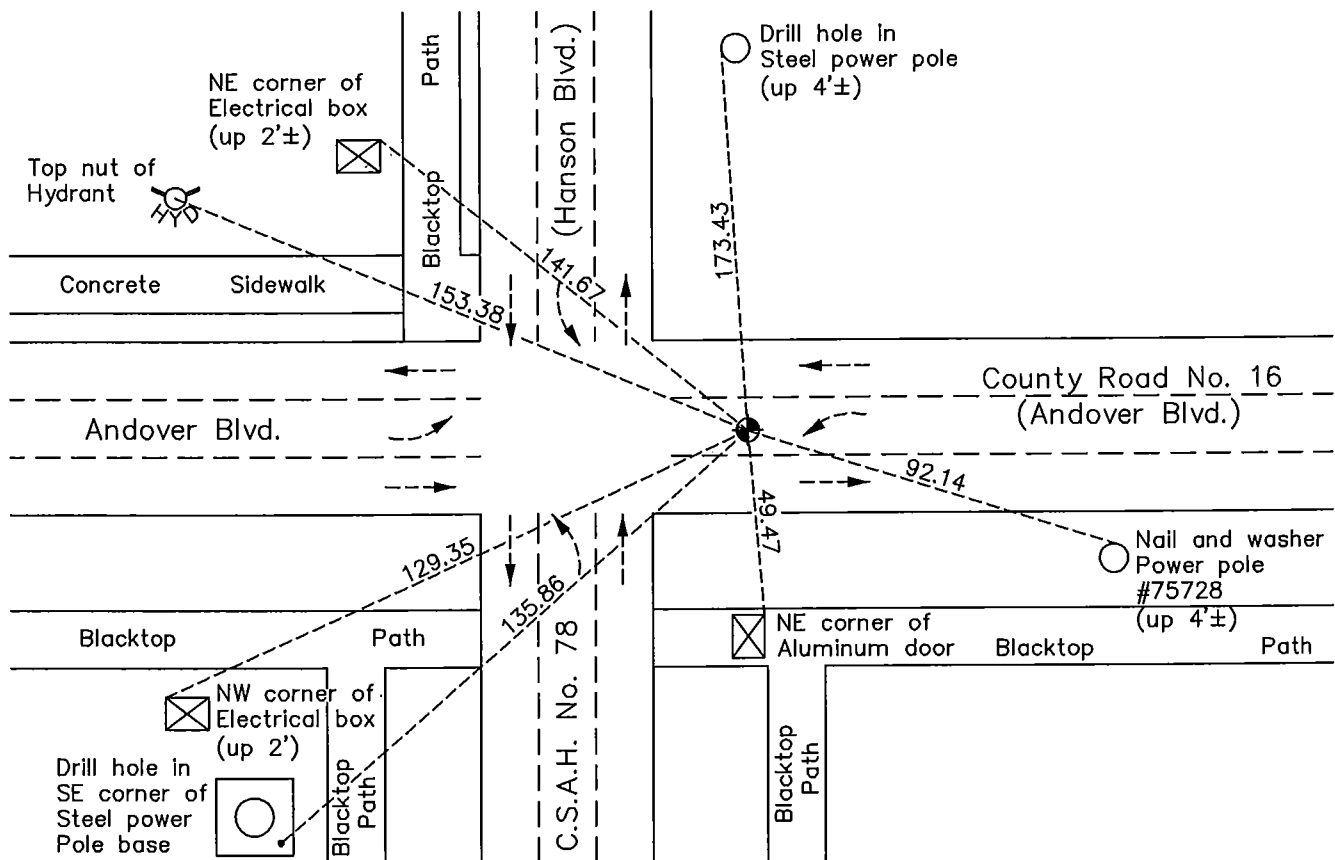
East 1/4 Corner of Sec. 27 Township 32 Range 24

On the 11th day of June, 1959, the described corner was evidenced by a 3/4" iron pipe

and to perpetuate the location of said corner, at the exact location thereof, a permanent marker was placed consisting of a cast iron monument

AND on the 20th day of October, 2010, said permanent marker was found down 0.1'± and the ties were updated

Updated reference ties are as shown below.



Revision Date
6/08/11

N.A.D. 1983 Coordinates
(1996 Adjustment)

County Project Coordinates	
Northing	172361.4691
Easting	489826.0775
Date	6/30/00

I hereby certify that this United States public land survey monument record is correct and complete to the best of my knowledge and belief.

Larry D. Hoium Date 6/08/11

Larry D. Hoium, Anoka County Surveyor
Minnesota License Number 18165

HISTORY OF GOVERNMENT CORNER

Page No. 97

County of Anoka

State of Minnesota

East 1/4 Corner of Sec. 27 Township 32 Range 24

CORNER HISTORY:

June 11, 1959 - Found 3/4" iron pipe flush with the blacktop. Established ties to monument.

August 17, 1964 - Found 3/4" iron pipe down 0.1'± and updated ties.

July 26, 1968 - Replaced 3/4" iron pipe with a cast iron monument set flush with the surface. Set P.K. nails 2.00' north and east and updated ties.

August 21, 1973 - Found cast iron monument and raised it to the surface. Updated ties.

June 9, 1976 - Found cast iron monument and updated ties.

June 6, 1979 - Found cast iron monument and updated ties.

June 25, 1982 - Found cast iron monument and updated ties.

August 10, 1982 - Set cast iron monument flush with surface after road construction using construction ties. Updated ties.

May 31, 1985 - Replaced broken cast iron monument with a new cast iron monument set flush with the bituminous. Updated ties.

July 19, 1993 - Found cast iron monument and updated ties.

October 4, 1995 - Found cast iron monument and updated ties.

June 30, 2000 - Found cast iron monument and established NAD 1983 (1996 Adjustment) Anoka County Project Coordinates by Static GPS methods. Updated ties.

October 20, 2010 - Found cast iron monument down 0.1'± and updated ties.