

CERTIFICATE OF LOCATION OF GOVERNMENT CORNER

County of Anoka

State of Minnesota

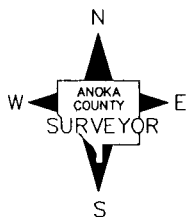
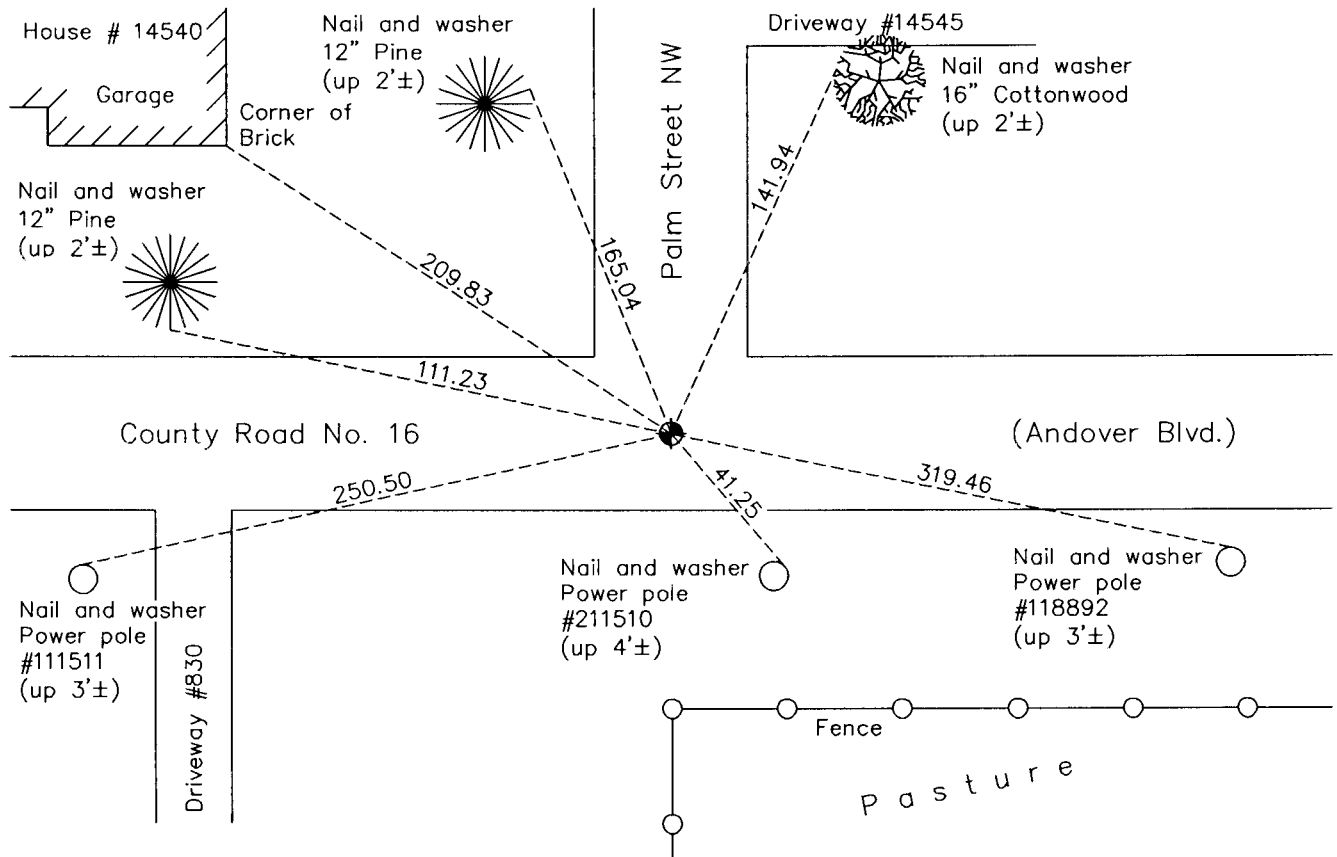
East 1/4 Corner of Sec. 26 Township 32 Range 24

On the 4th day of January, 1962, the described corner was evidenced by a 1/2" iron pipe

and to perpetuate the location of said corner, at the exact location thereof, a permanent marker was placed consisting of a cast iron monument

AND on the ___ day of June, 2012, said permanent marker was raised to the surface after overlay of road was completed

Updated reference ties are as shown below.



Revision Date
12/17/12

N.A.D. 1983 Coordinates
(1996 Adjustment)

County Project Coordinates	
Northing	172252.3378
Easting	495127.6276
Date	10/02/00

I hereby certify that this United States public land survey monument record is correct and complete to the best of my knowledge and belief.

Larry D. Hoium Date 12/17/12

Larry D. Hoium, Anoka County Surveyor

Minnesota License Number 18165

HISTORY OF GOVERNMENT CORNER

Page No. 98

County of Anoka

State of Minnesota

East 1/4 Corner of Sec. 26 Township 32 Range 24

CORNER HISTORY:

January 4, 1962 - Found 1/2" iron pipe set by N.C. Hoium near centerline of Andover Blvd. Established ties to iron pipe.

August 17, 1964 - Found 1/2" iron pipe flush with the surface and updated ties.

July 15, 1968 - Found 1/2" iron pipe and updated ties.

September 9, 1968 - Replaced 1/2 " iron pipe with a cast iron monument set flush with the surface. Set P.K. nails 2.00' north and east of monument and updated ties.

July 6, 1972 - Found cast iron monument and updated ties.

August 21, 1973 - Added spacer/s and replaced top of cast iron monument. Monument is flush with surface. Updated ties.

June 9, 1976 - Found cast iron monument and updated ties.

June 7, 1979 - Found cast iron monument and updated ties.

June 30, 1982 - Found cast iron monument and updated ties.

June 4, 1985 - Found cast iron monument and updated ties.

August 2, 1988 - Found cast iron monument and updated ties.

July 19, 1993 - Found cast iron monument and updated ties.

October 2, 2000 - Found cast iron monument and established NAD 1983 (1996 Adjustment) Anoka County Project Coordinates by Static GPS methods. Updated ties.

October 20, 2010 - Found cast iron monument flush with the surface and updated ties.

May 24, 2012 - Loosened top of cast iron monument prior to overlaying road surface.

June 2012 - Added spacer/s and replaced top of cast iron monument. Monument is flush with surface. Updated ties.