

# CERTIFICATE OF LOCATION OF GOVERNMENT CORNER

County of Anoka

State of Minnesota

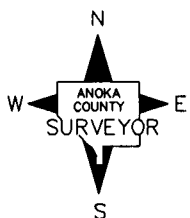
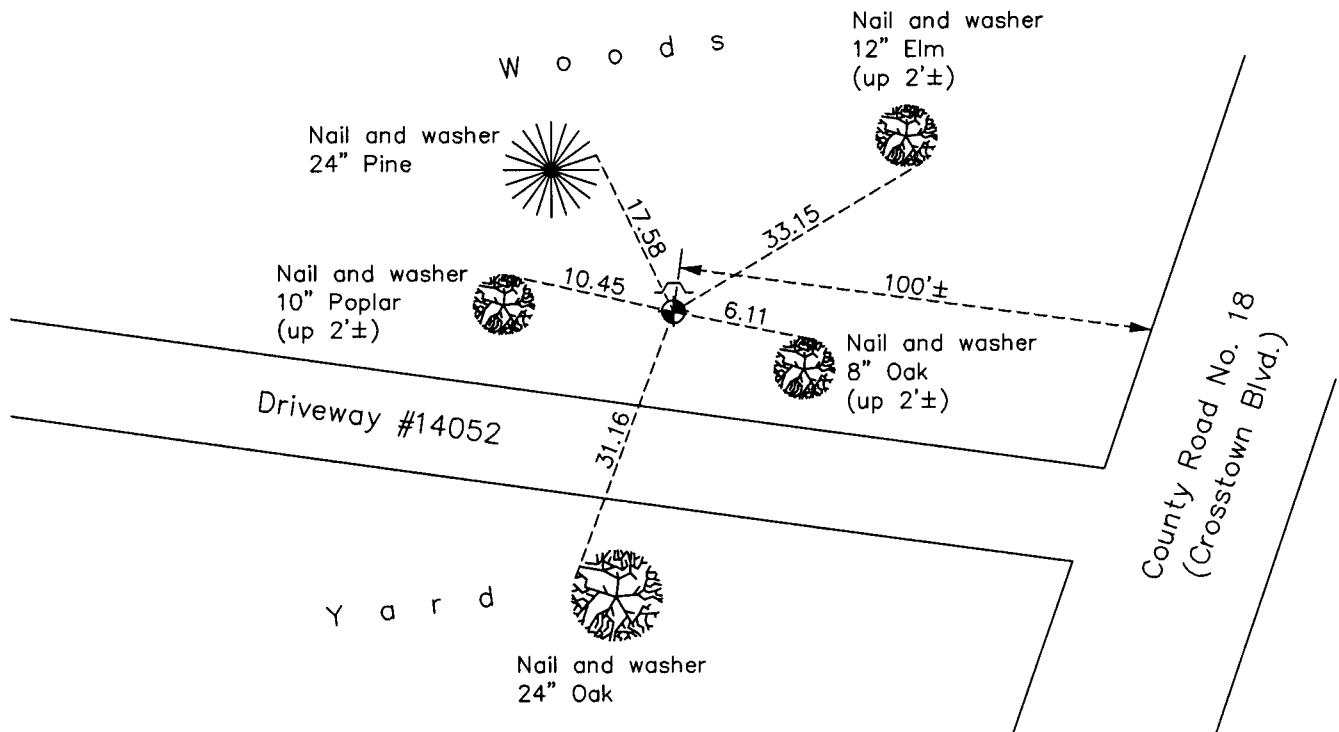
## Northeast Corner of Sec. 33 Township 32 Range 24

On the 1st day of August, 1960, the described corner was evidenced by a 1 1/2" iron pipe

and to perpetuate the location of said corner, at the exact location thereof, a permanent marker was placed consisting of a cast iron monument

AND on the 3rd day of November, 2010, said permanent marker was found flush with the surface and the ties were updated. A sign and post was set on the north side.

Updated reference ties are as shown below.



Revision Date

6/14/11

N.A.D. 1983 Coordinates  
(1996 Adjustment)

County Project Coordinates	
Northing	<u>169853.6586</u>
Easting	<u>484542.9188</u>
Date	<u>11/16/00</u>

I hereby certify that this United States public land survey monument record is correct and complete to the best of my knowledge and belief.

*Larry D. Hoium* Date 6/14/11

\_\_\_\_\_  
Larry D. Hoium, Anoka County Surveyor

Minnesota License Number 18165

# HISTORY OF GOVERNMENT CORNER

County of Anoka

State of Minnesota

## Northeast Corner of Sec. 33 Township 32 Range 24

### **CORNER HISTORY:**

August 1, 1960 - Found 1-1/2" iron pipe up 1'± and established ties to monument.

August 26, 1964 - Found 1-1/2" iron pipe and updated ties.

July 23, 1968 - Replaced 1-1/2" iron pipe with a cast iron monument set up 0.1'±. Updated ties.

July 10, 1972 - Found cast iron monument and updated ties.

June 10, 1976 - Found cast iron monument and updated ties.

June 12, 1979 - Found cast iron monument and updated ties.

June 29, 1982 - Found cast iron monument and updated ties.

June 6, 1985 - Found cast iron monument and updated ties.

July 29, 1988 - Found cast iron monument and updated ties.

July 22, 1993 - Found cast iron monument and updated ties.

November 16, 2000 - Found cast iron monument and established NAD 1983 (1996 Adjustment) Anoka County Project Coordinates by Static GPS methods. Updated ties.

November 3, 2010 - Found cast iron monument flush with the surface. Set sign and post on north side and updated ties.