

# CERTIFICATE OF LOCATION OF GOVERNMENT CORNER

County of Anoka

State of Minnesota

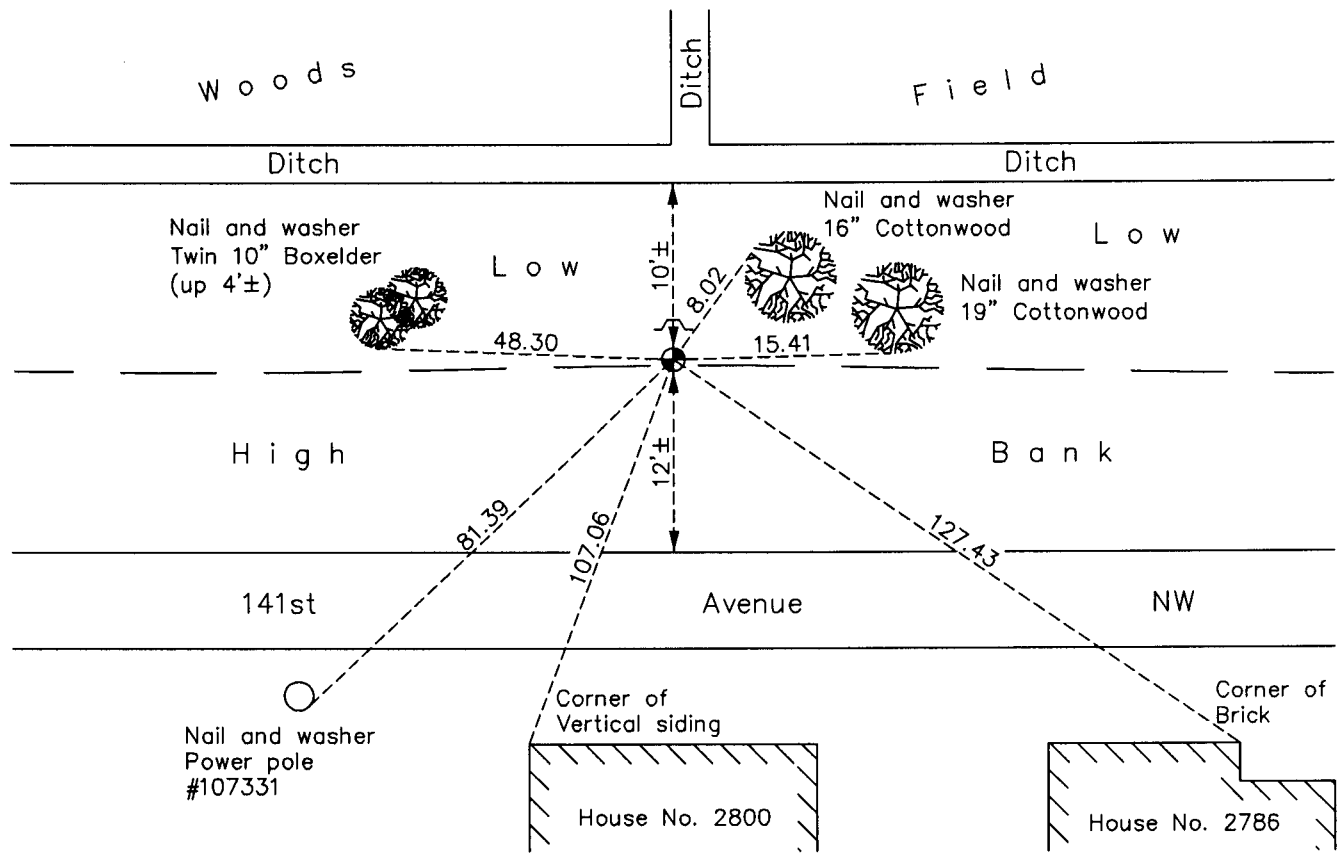
## South 1/4 Corner of Sec. 28 Township 32 Range 24

On the 8th day of August, 1960, the described corner was evidenced by a concrete monument

and to perpetuate the location of said corner, at the exact location thereof, a permanent marker was placed consisting of a cast iron monument with a sign and post on the north side

AND on the      day of October, 2010, said permanent marker was found down 1.0'± and the ties were updated

Updated reference ties are as shown below.



N  
  
 W ANOKA COUNTY SURVEYOR E  
 S

Revision Date  
6/14/11

N.A.D. 1983 Coordinates  
(1996 Adjustment)

County Project Coordinates	
Northing	169829.6040
Easting	481889.3854
Date	11/16/00

I hereby certify that this United States public land survey monument record is correct and complete to the best of my knowledge and belief.

*Larry D. Hoium* Date 6/14/11

Larry D. Hoium, Anoka County Surveyor  
 Minnesota License Number 18165

# HISTORY OF GOVERNMENT CORNER

Page No. 105

County of Anoka

State of Minnesota

## South 1/4 Corner of Sec. 28 Township 32 Range 24

### **CORNER HISTORY:**

August 8, 1960 - Found concrete monument up 1'± with iron pipe on west side. Established ties to monument.

August 26, 1964 - Found concrete monument and updated ties.

July 26, 1968 - Found concrete monument and updated ties.

July 11, 1972 - Found concrete monument and updated ties.

July 9, 1973 - Replaced broken concrete monument with a cast iron monument. Updated ties.

June 10, 1976 - Found cast iron monument and updated ties.

November 3, 1977 - Found cast iron monument and updated ties. Set sign and post on north side of monument.

June 11, 1979 - Found cast iron monument and updated ties.

June 29, 1982 - Found cast iron monument and updated ties.

June 6, 1985 - Found cast iron monument and updated ties.

July 29, 1988 - Found cast iron monument and updated ties.

July 22, 1993 - Found cast iron monument and updated ties.

November 16, 2000 - Found cast iron monument and established NAD 1983 (1996 Adjustment) Anoka County Project Coordinates by Static GPS methods. Updated ties.

October 2010 - Found cast iron monument down 1'± with sign and post on north side and updated ties.