

# CERTIFICATE OF LOCATION OF GOVERNMENT CORNER

County of Anoka

State of Minnesota

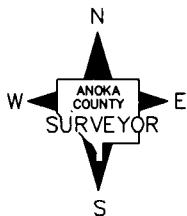
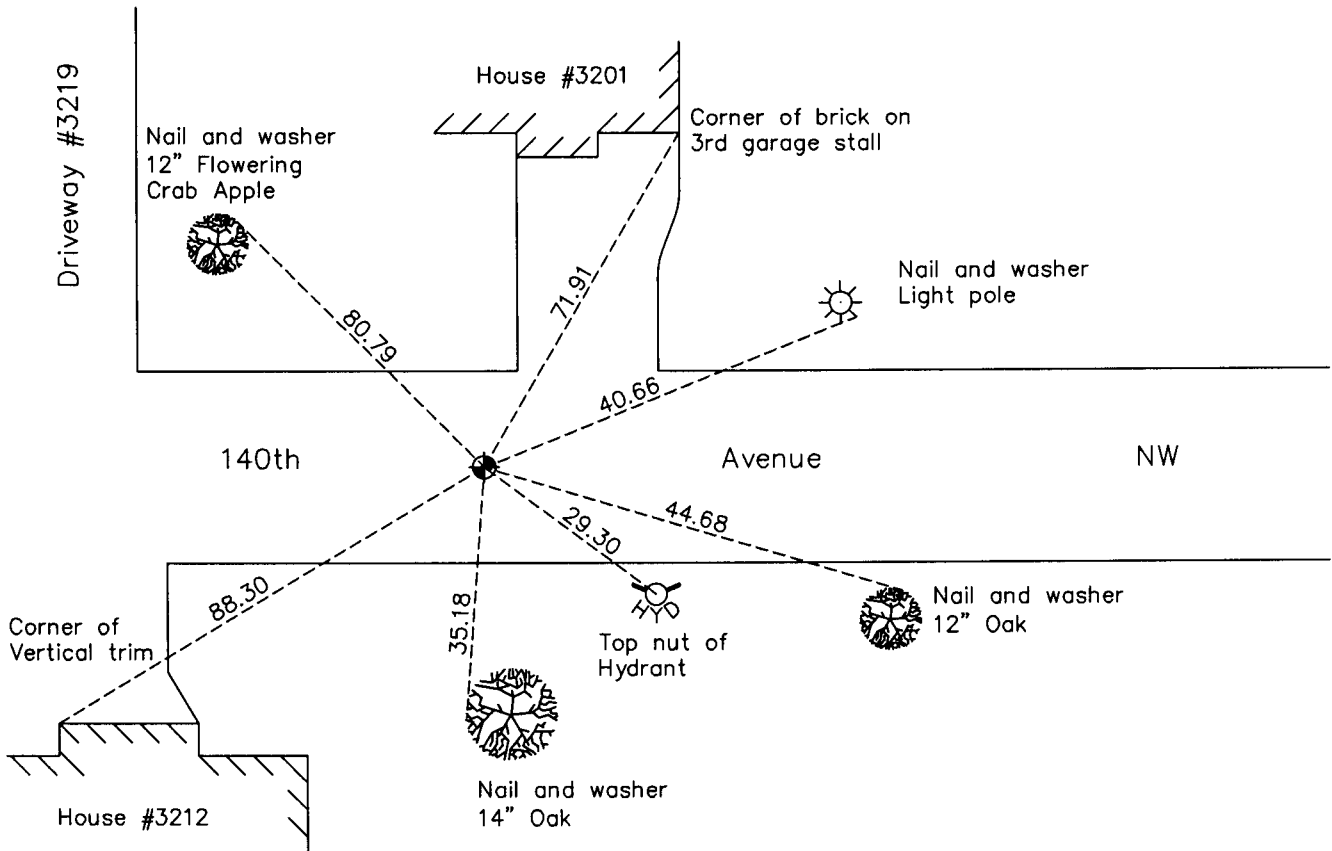
Witness Corner of Sec. 33 Township 32 Range 24  
 (on west line of NW 1/4)

On the 10th day of July, 1990, the described corner was evidenced by area resurvey

and to perpetuate the location of said corner, at the exact location thereof, a permanent marker was placed consisting of a cast iron monument

AND on the 7th day of October, 2010, said permanent marker was found flush with the surface and the ties were updated

Updated reference ties are as shown below.



Revision Date

**6/15/11**

N.A.D. 1983 Coordinates  
 (1996 Adjustment)

County Project Coordinates	
Northing	<u>169142.8031</u>
Easting	<u>479251.1922</u>
Date	<u>10/26/00</u>

I hereby certify that this United States public land survey monument record is correct and complete to the best of my knowledge and belief.

*Larry D. Hoium* Date 6/15/11

Larry D. Hoium, Anoka County Surveyor

Minnesota License Number 18165

# HISTORY OF GOVERNMENT CORNER

Page No. 106B

County of Anoka

State of Minnesota

Witness Corner of Sec. 33 Township 32 Range 24  
(on west line of NW 1/4)

## **CORNER HISTORY:**

July 10, 1990 - Set cast iron monument flush with road surface using area resurvey and established ties to monument.

July 22, 1993 - Found cast iron monument and updated ties.

October 26, 2000 - Found cast iron monument and established NAD 1983 (1996 Adjustment) Anoka County Project Coordinates by Static GPS methods. Updated ties.

October 7, 2010 - Found cast iron monument flush with the surface and updated ties.