

CERTIFICATE OF LOCATION OF GOVERNMENT CORNER

County of Anoka

State of Minnesota

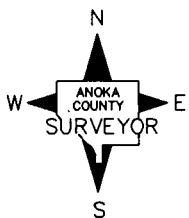
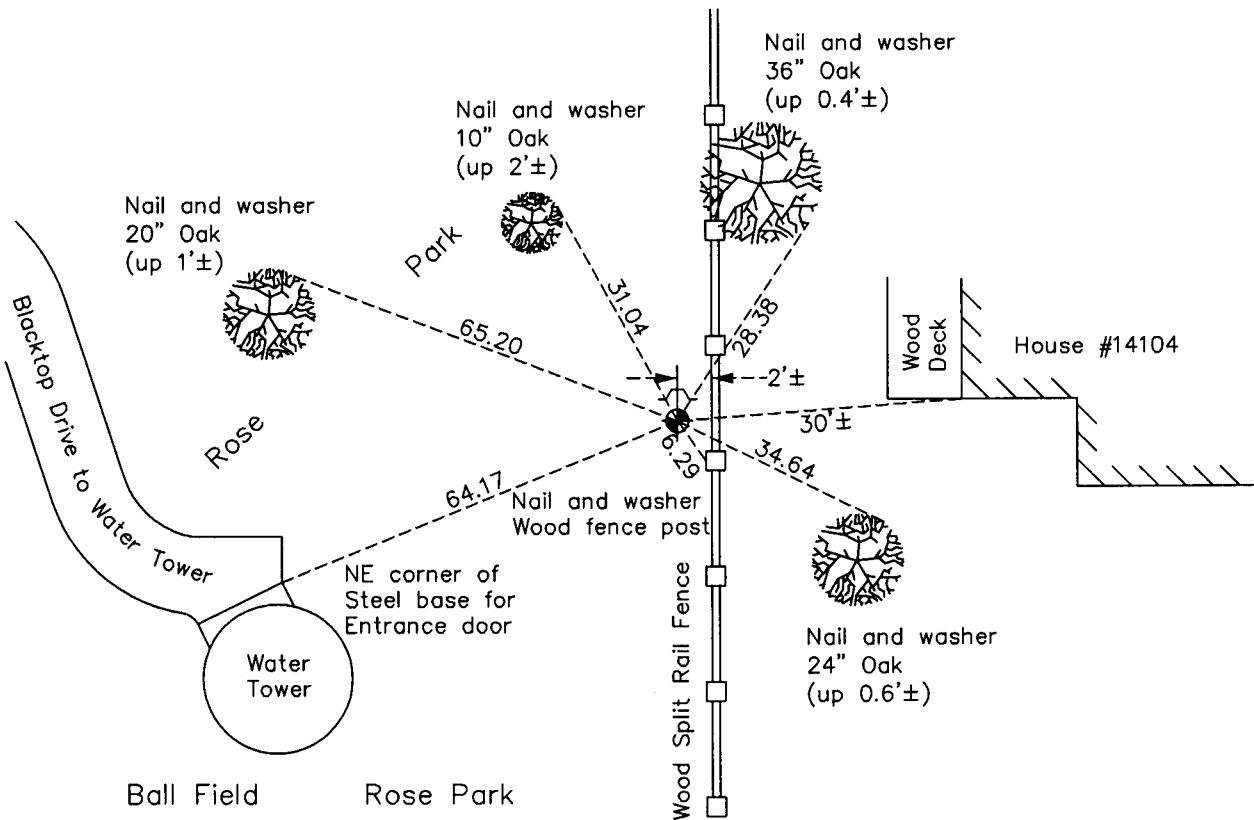
Witness Corner of Sec. 32 Township 32 Range 24
 (on north line of NE 1/4)

On the 10th day of July, 1990, the described corner was evidenced by area resurvey

and to perpetuate the location of said corner, at the exact location thereof, a permanent marker was placed consisting of a cast iron monument with a sign and post on the north side

AND on the 4th day of November, 2010, said permanent marker was found down 0.3'± and the ties were updated

Updated reference ties are as shown below.



Revision Date

6/21/11

N.A.D. 1983 Coordinates
 (1996 Adjustment)

County Project Coordinates	
Northing	169823.0821
Easting	477947.0125
Date	10/26/00

I hereby certify that this United States public land survey monument record is correct and complete to the best of my knowledge and belief.
Larry D. Hoium Date 6/21/11
 Larry D. Hoium, Anoka County Surveyor
 Minnesota License Number 18165

HISTORY OF GOVERNMENT CORNER

Page No. 106D

County of Anoka

State of Minnesota

Witness Corner of Sec. 32 Township 32 Range 24
(on north line of NE 1/4)

CORNER HISTORY:

July 10, 1990 - Set cast iron monument flush with the surface using area resurvey and established ties to monument. Also set sign and post on north side of monument.

July 22, 1993 - Found cast iron monument and updated ties.

October 26, 2000 - Found cast iron monument and established NAD 1983 (1996 Adjustment) Anoka County Project Coordinates by Static GPS methods. Updated ties.

November 4, 2010 - Found cast iron monument down 0.3'± with a sign and post on the north side and updated ties.