

# CERTIFICATE OF LOCATION OF GOVERNMENT CORNER

County of Anoka

State of Minnesota

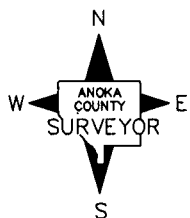
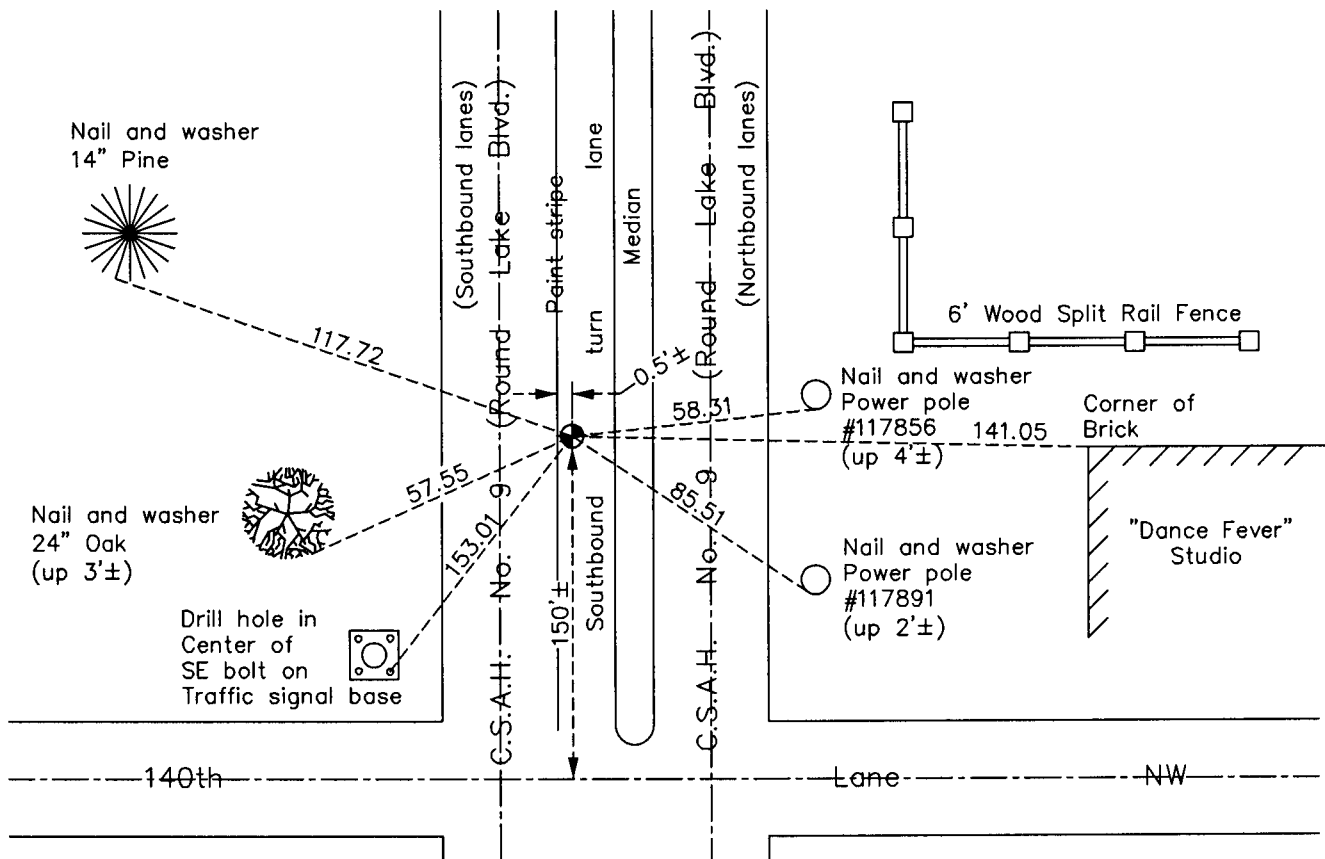
## South $\frac{1}{4}$ Corner of Sec. 29 Township 32 Range 24

On the 26th day of February, 1960, the described corner was evidenced by an iron pipe

and to perpetuate the location of said corner, at the exact location thereof, a permanent marker was placed consisting of a cast iron monument

AND on the 10th day of December, 2010, said permanent marker was found flush with the surface and the ties were updated

Updated reference ties are as shown below.



Revision Date

6/21/11

N.A.D. 1983 Coordinates  
(1996 Adjustment)

County Project Coordinates	
Northing	169840.3353
Easting	476636.0212
Date	10/12/00

I hereby certify that this United States public land survey monument record is correct and complete to the best of my knowledge and belief.

*Larry D. Hoium* Date 6/21/11

Larry D. Hoium, Anoka County Surveyor

Minnesota License Number 18165

# HISTORY OF GOVERNMENT CORNER

Page No. 107

County of Anoka

State of Minnesota

## South 1/4 Corner of Sec. 29 Township 32 Range 24

### **CORNER HISTORY:**

May 10, 1941 - H.A. Cartwright found concrete monument down 4 inches. Established ties to monument.

February 15, 1960 - Found pinched iron down 4 inches and updated ties.

February 26, 1960 - Replaced iron pipe with a cast iron monument set flush with the surface. Updated ties.

August 25, 1964 - Found cast iron monument flush with the surface and updated ties.

July 25, 1968 - Found cast iron monument and updated ties. Set P.K. nails 2.00' north and east of monument.

July 5, 1972 - Found cast iron monument and updated ties.

June 10, 1976 - Raised cast iron monument. Monument is flush with road surface. Updated ties and set P.K. nails 2.00' north and east of monument.

May 8, 1979 - Found cast iron monument and added additional ties prior to road construction.

October 1, 1980- Reset cast iron monument flush with surface after road construction using construction ties. Found bottom half of old cast iron monument in place and checked its location with ties.

July 1, 1982 - Found cast iron monument and updated ties.

June 3, 1985 - Found cast iron monument and updated ties.

August 9, 1988 - Found cast iron monument and updated ties.

July 19, 1993 - Found cast iron monument and updated ties.

April 19, 1999 - Found cast iron monument and updated ties.

October 12, 2000 - Found cast iron monument and established NAD 1983 ( 1996 Adjustment) Anoka County Project Coordinates by Static GPS methods. Updated ties.

April 15, 2004 - Set construction ties and removed cast iron monument prior to road construction.

September 7, 2005 - Set cast iron monument after road construction using construction ties. Verified location of corner by Static GPS methods. Updated ties.

December 10, 2010 - Found cast iron monument flush with the surface and updated ties.