

CERTIFICATE OF LOCATION OF GOVERNMENT CORNER

County of Anoka

State of Minnesota

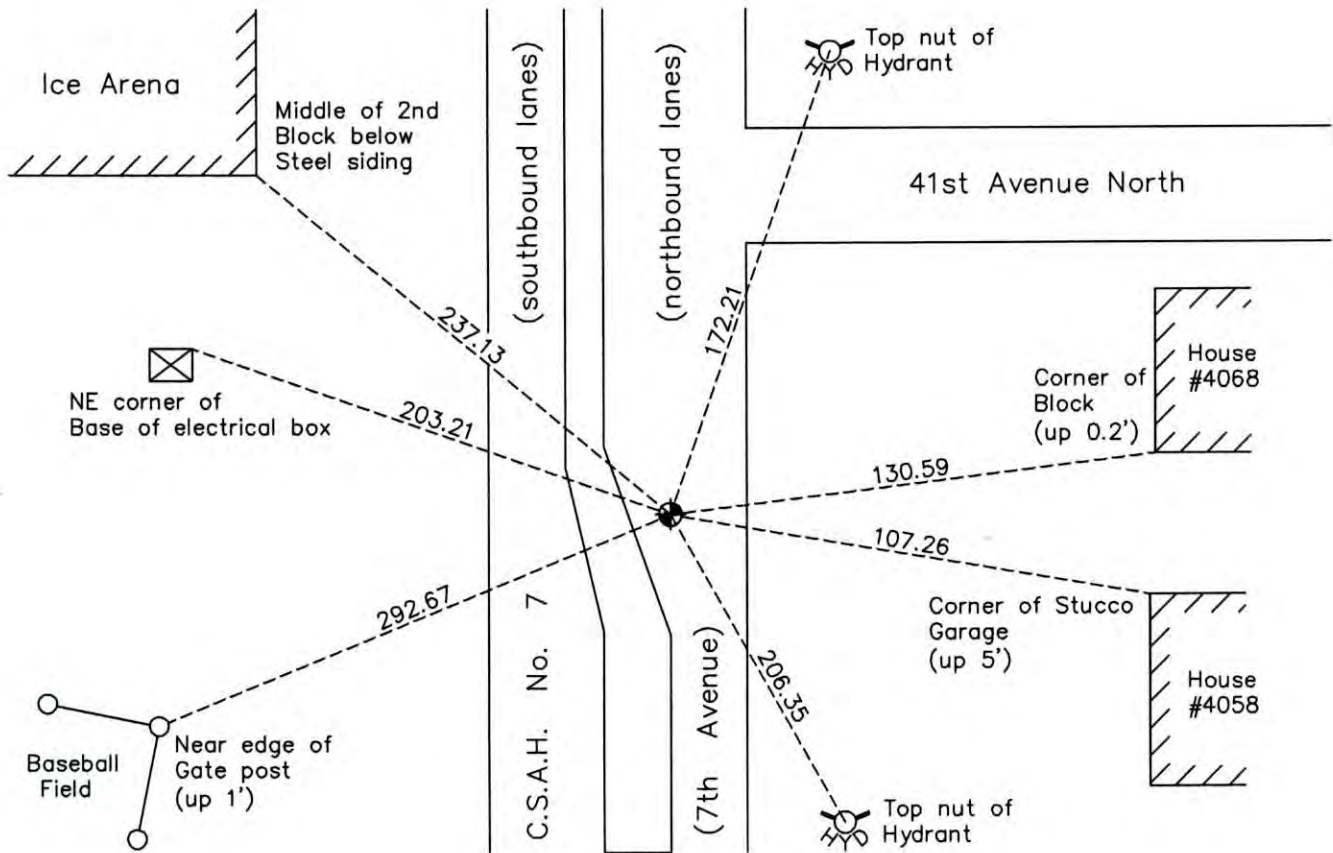
North 1/4 Corner of Sec. 31 Township 32 Range 24

On the 14th day of September, 1964, the described corner was evidenced by a 1/2" iron pipe

and to perpetuate the location of said corner, at the exact location thereof, a permanent marker was placed consisting of a cast iron monument

AND on the 31st day of October, 2013, said permanent marker was replaced with a cast iron monument after road construction and the ties were updated

Updated reference ties are as shown below.



Revision Date
12/13/13

N.A.D. 1983 Coordinates
(1996 Adjustment)

County Project Coordinates	
Northing	169848.0449
Easting	471365.5489
Date	11/27/00

I hereby certify that this United States public land survey monument record is correct and complete to the best of my knowledge and belief.

Larry D. Hoium Date 12/13/13

Lorry D. Hoium, Anoka County Surveyor
Minnesota License Number 18165

HISTORY OF GOVERNMENT CORNER

County of Anoka

State of Minnesota

North 1/4 Corner of Sec. 31 Township 32 Range 24

CORNER HISTORY:

September 14, 1964 - Found 1/2" pinched iron pipe. Established ties to monument. Roland W. Anderson looked for a granite monument that he believed was gone and could not find it (see field notes) .

July 13, 1970 - Replaced 1/2" pinched iron pipe with a cast iron monument set flush with the surface. Updated ties and set P.K. nails 2.00' north and east of monument.

June 20, 1972 - Found cast iron monument and updated ties.

June 11, 1976 - Raised broken cast iron monument to flush with the surface and updated ties.

June 7, 1979 - Found cast iron monument and updated ties.

June 30, 1982 - Found cast iron monument and updated ties.

July 28, 1988 - Found cast iron monument and updated ties.

July 15, 1993 - Found cast iron monument and updated ties.

November 27, 2000 - Found cast iron monument and established NAD 1983 (1996 Adjustment) Anoka County Project Coordinates by Static GPS methods. Updated ties.

January 14, 2011 - Found cast iron monument and updated ties.

October 31, 2013 - Reset cast iron monument after road construction. Verified location of corner by Static GPS methods. Updated ties.